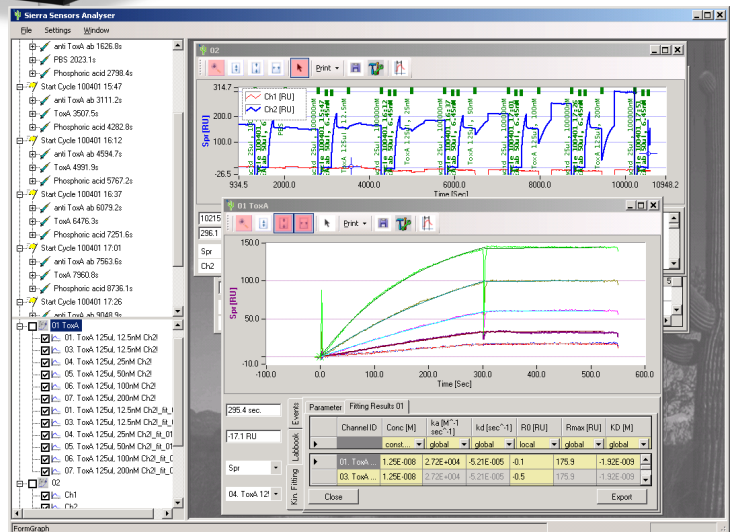
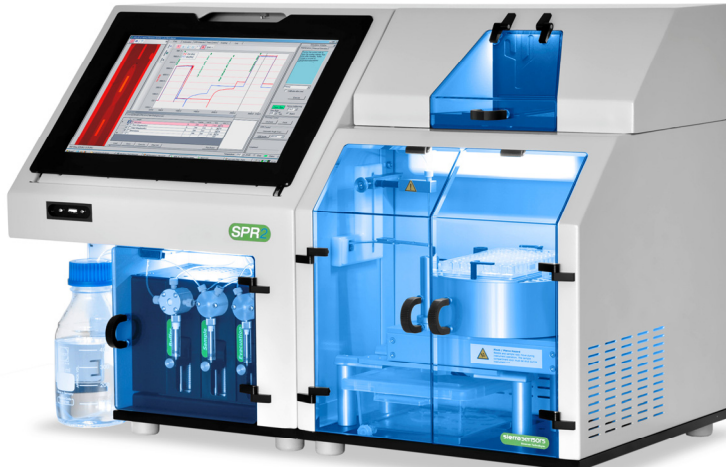


Analysier Primer

A quick guide to explore, manipulate and export data generated with Sierra Sensors' label free instruments



Contact details:

<http://www.sierrasensors.com>, email: <mailto:info@sierrasensors.com>

Sierra Sensors GmbH

Falkenried 88

20251 Hamburg

Germany

Phone: +49 40 46069654

Fax: +49 40 4606 97476

US

Phone: 401-404-5549

Content:

Analyser Primer 1

1 Introduction..... 2

2 Data Pre-Processing and Export for Scrubber, Clamp, and TraceDrawer..... 3

 2.1 Open the data 4

 2.2 Preview of the data 4

 2.3 Set the control channel 6

 2.4 Create overlay plot..... 8

 2.5 Data export..... 9

1 Introduction

This document describes the basic process of loading, manipulating, and exporting data with Sierra Sensors’ Analyser for further analysis.

Current export formats are text based, where the individual injections are split up into CSV files.



2 Data Pre-Processing and Export for Scrubber, Clamp, and TraceDrawer

Figure 1 shows a flow diagram for the export of a overlay. For this example it is assumed, that a simple assay format has been used (i.e. single subtraction, no buffer subtraction).

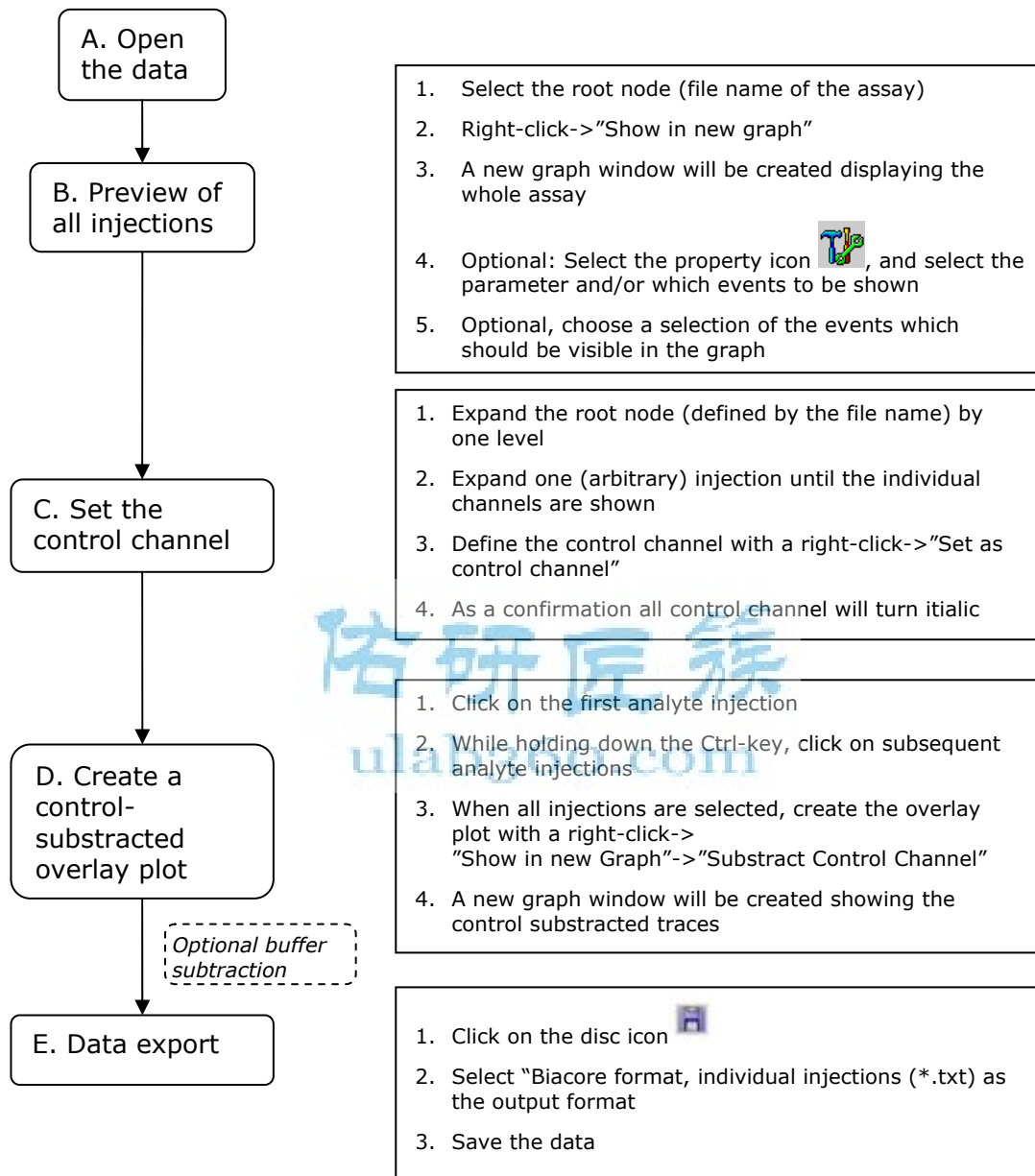


Figure 1: Flow diagram for the data export

The following sections show step-by-step screenshots.

2.1 Open the data

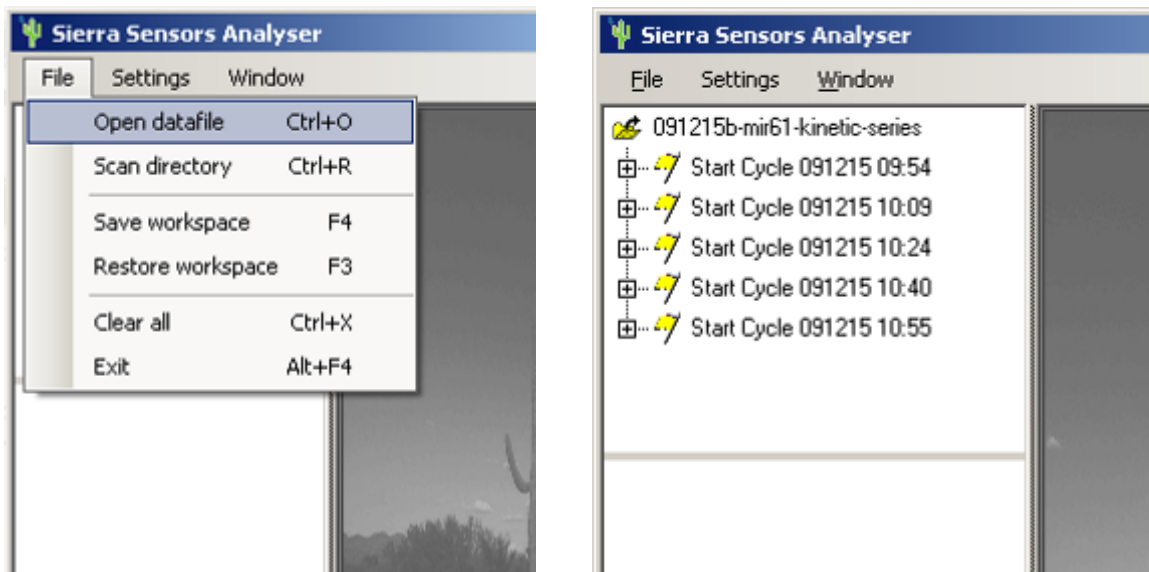


Figure 2: Opening of an SDF file. Right: explorer view, after the file has been opened

2.2 Preview of the data

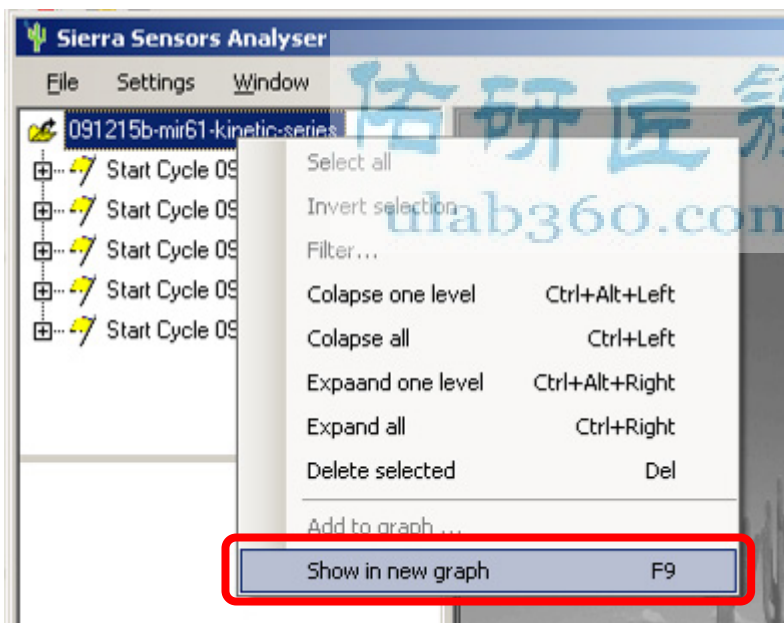


Figure 3: Select "Show in new graph" or press [F9] to display the whole assay sequence in one graph

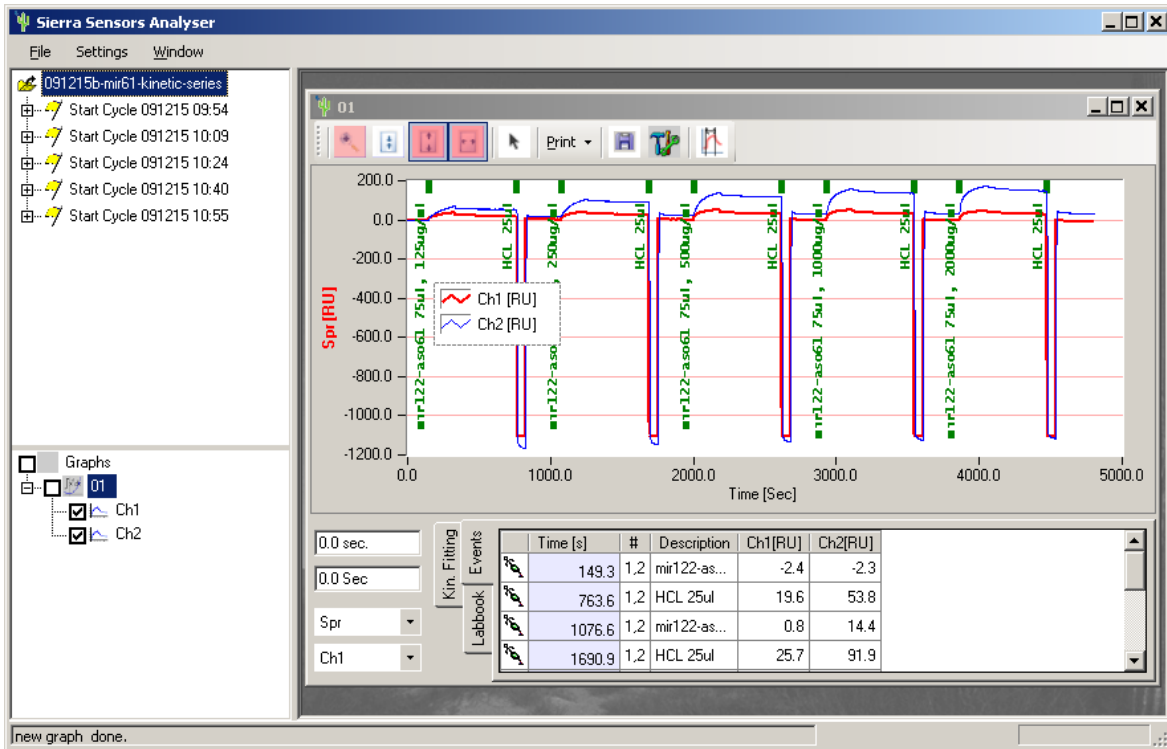


Figure 4: Full assay sequence

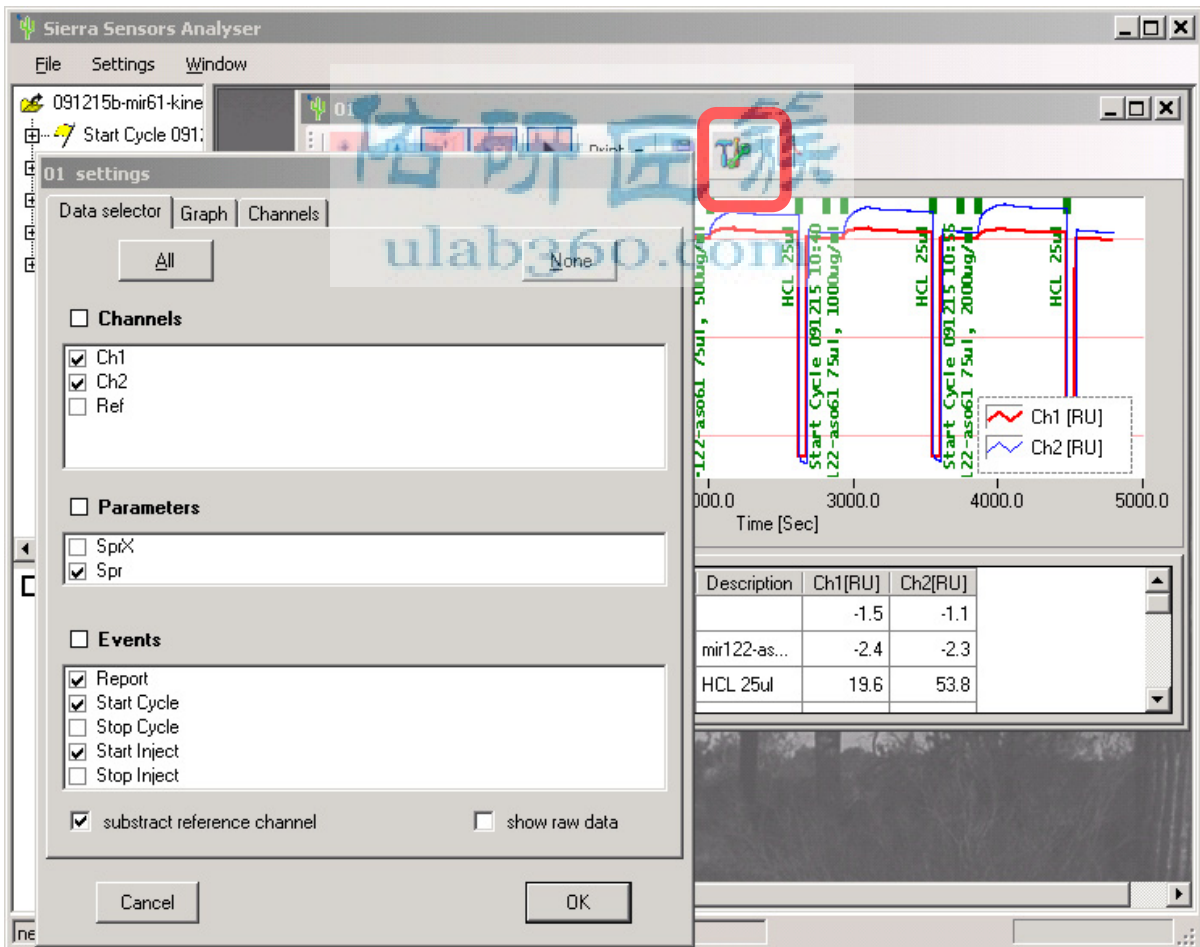


Figure 5: Select the tool dialog box, to choose paramters and events; as a default the only the "Spr" parameter should be selected.

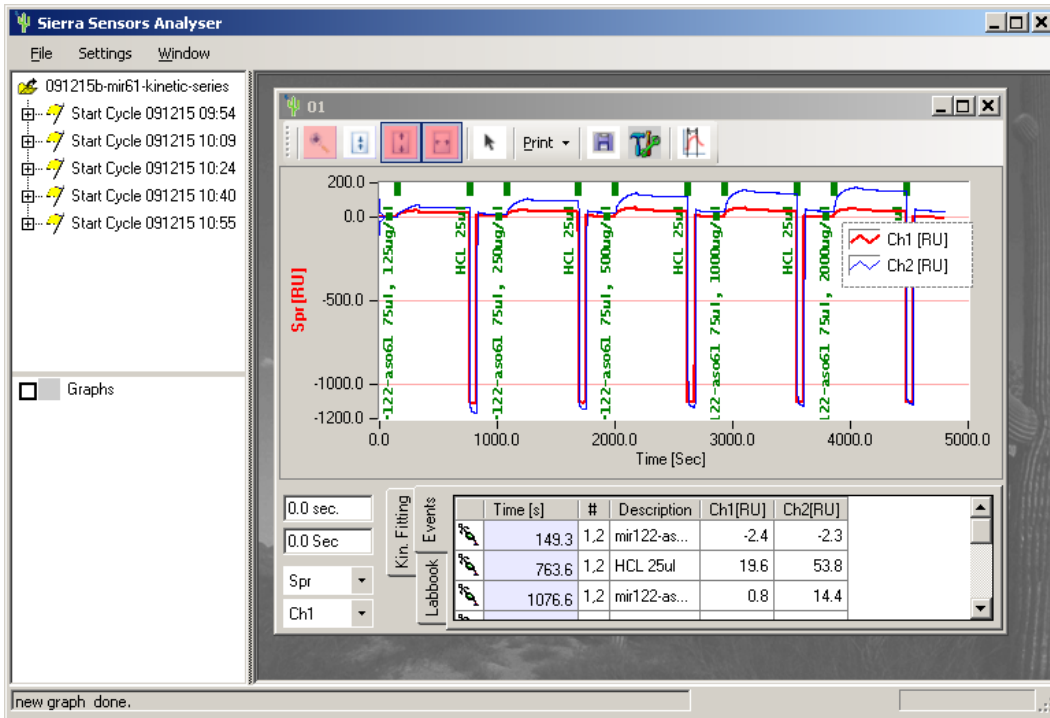


Figure 6: Full assay sequence showing only "inject start" events

2.3 Set the control channel

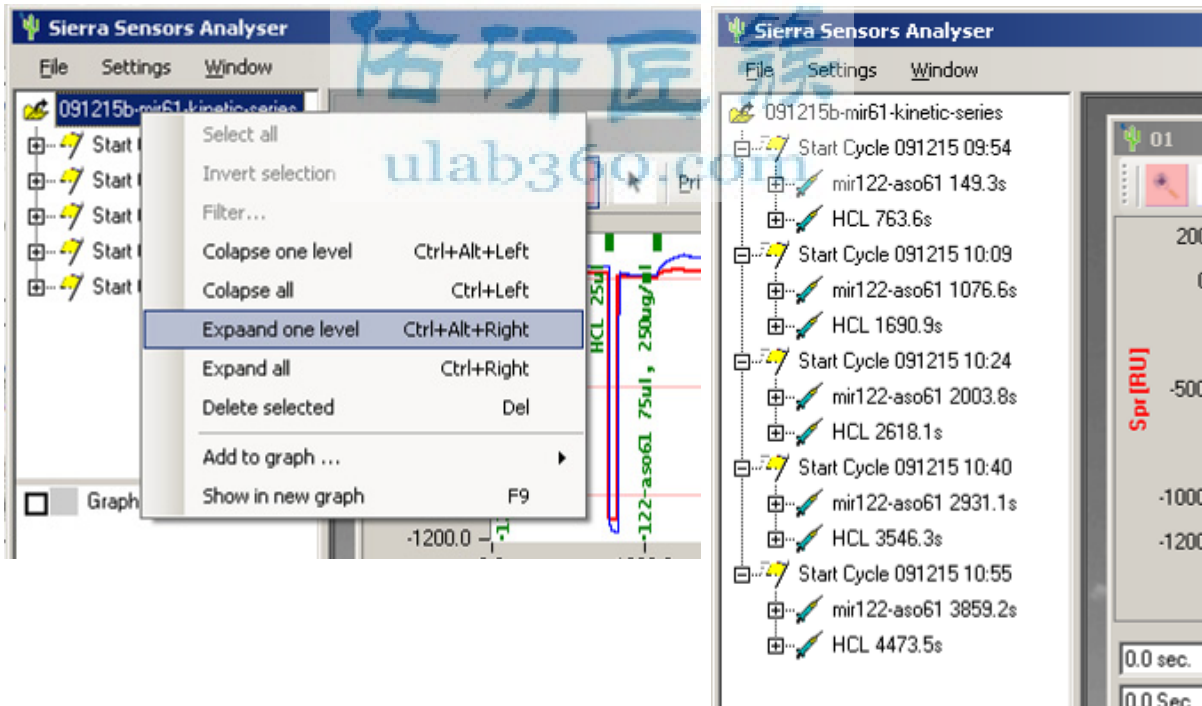


Figure 7: Expand the tree view, to display individual injections

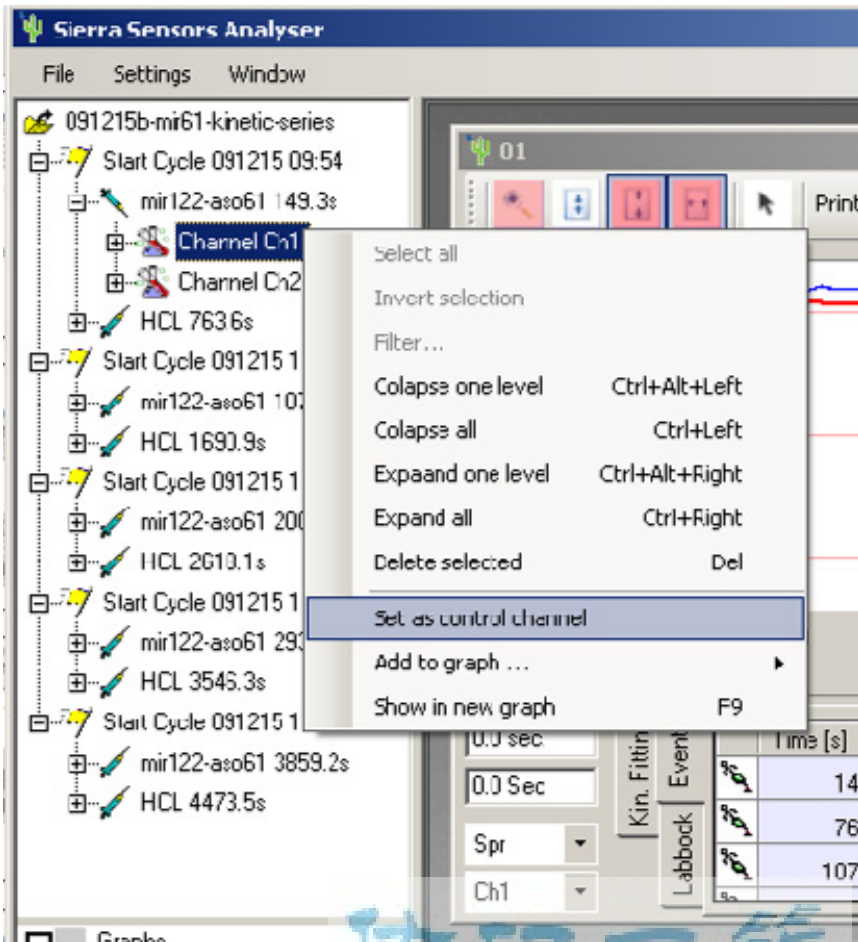


Figure 8: Expand one node down to the individual channels, and define the control channel

佑研區務
ulab360.com

2.4 Create overlay plot

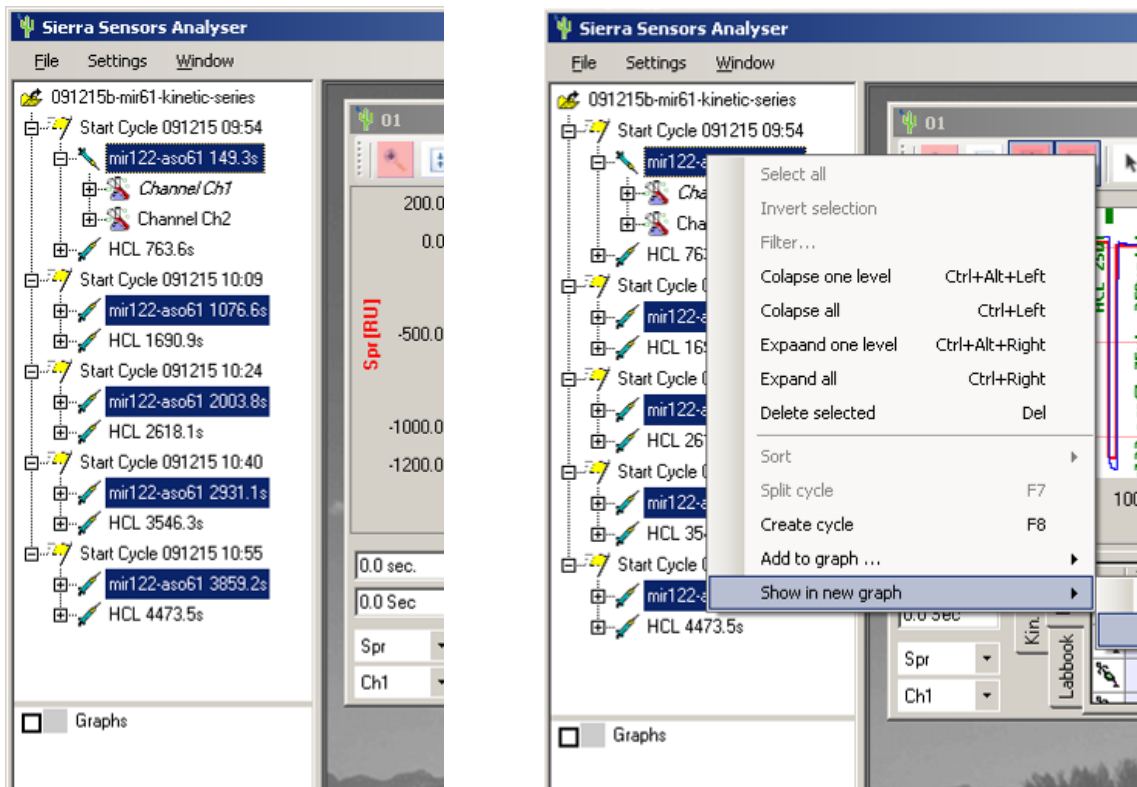


Figure 9: Select multiple injections by holding down the [Ctrl]-key; then create a new overlay plot

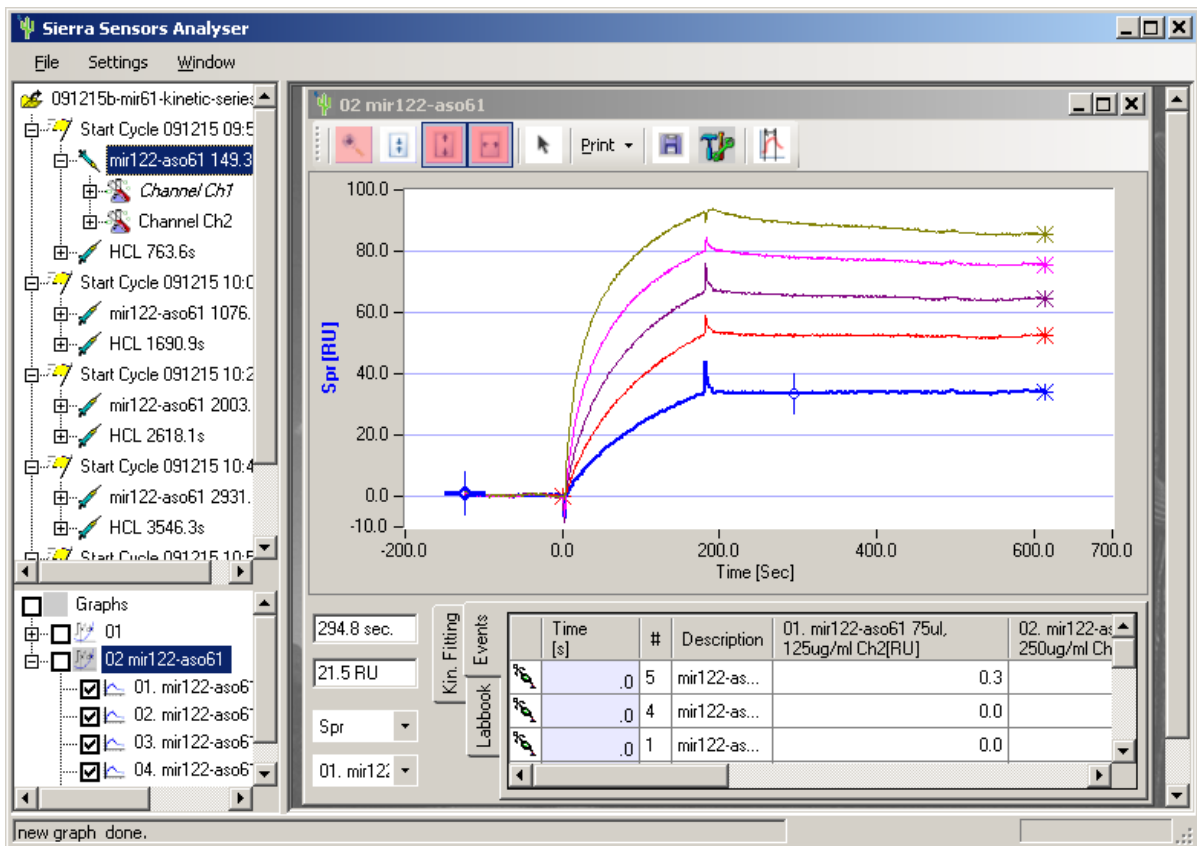


Figure 10: Overlay plot

2.5 Data export

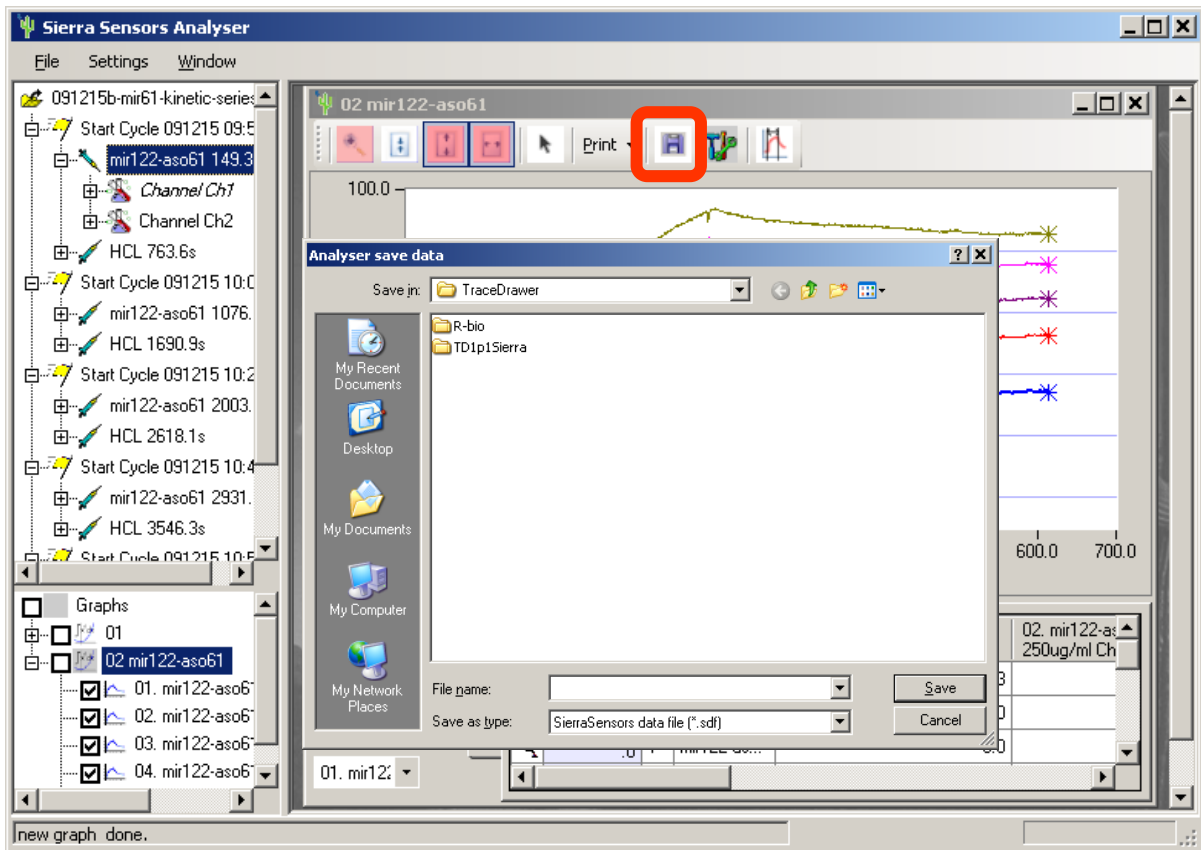
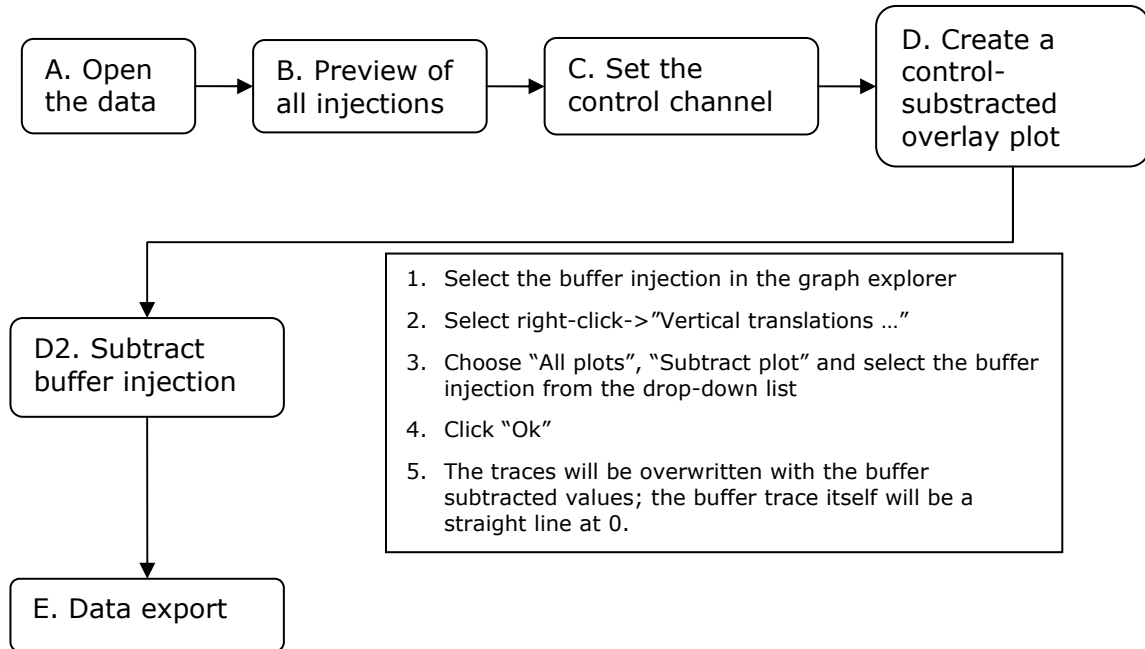


Figure 11: Export of the data in a txt-based format

3 Double Subtraction (Buffer injection subtraction)

For assays where double subtraction is advised, a buffer injection should be subtracted from the control-subtracted data.



3.1 Buffer subtraction

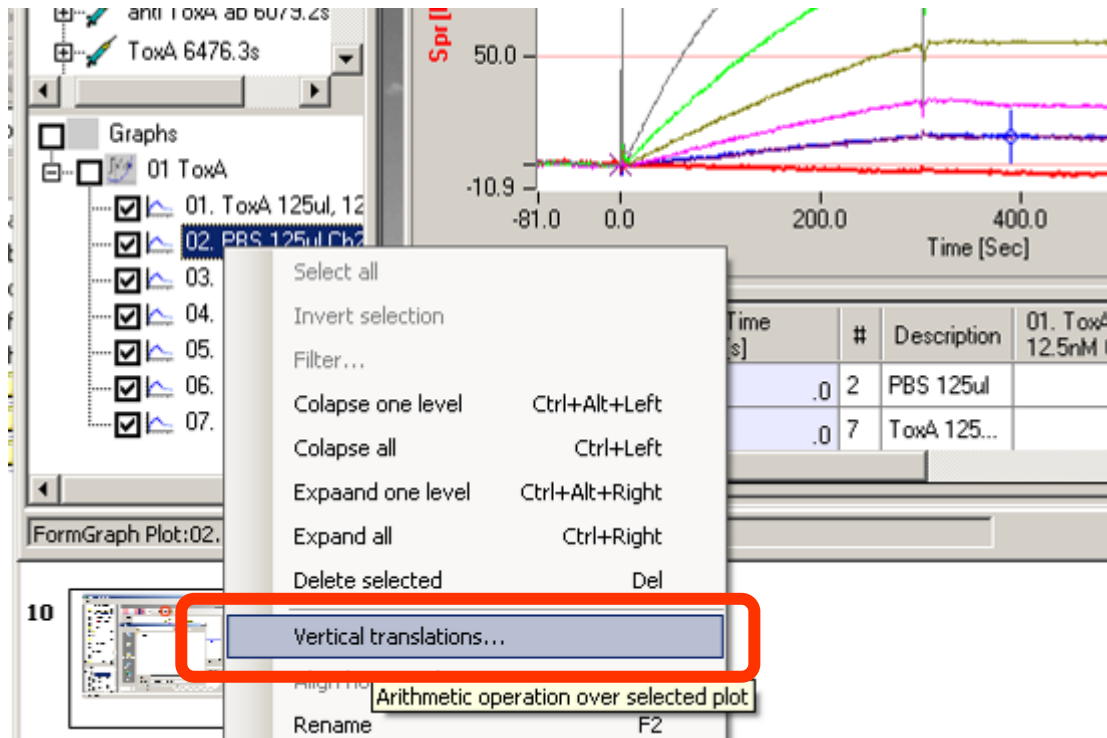


Figure 12: Select "Vertical translation" from the dialog box

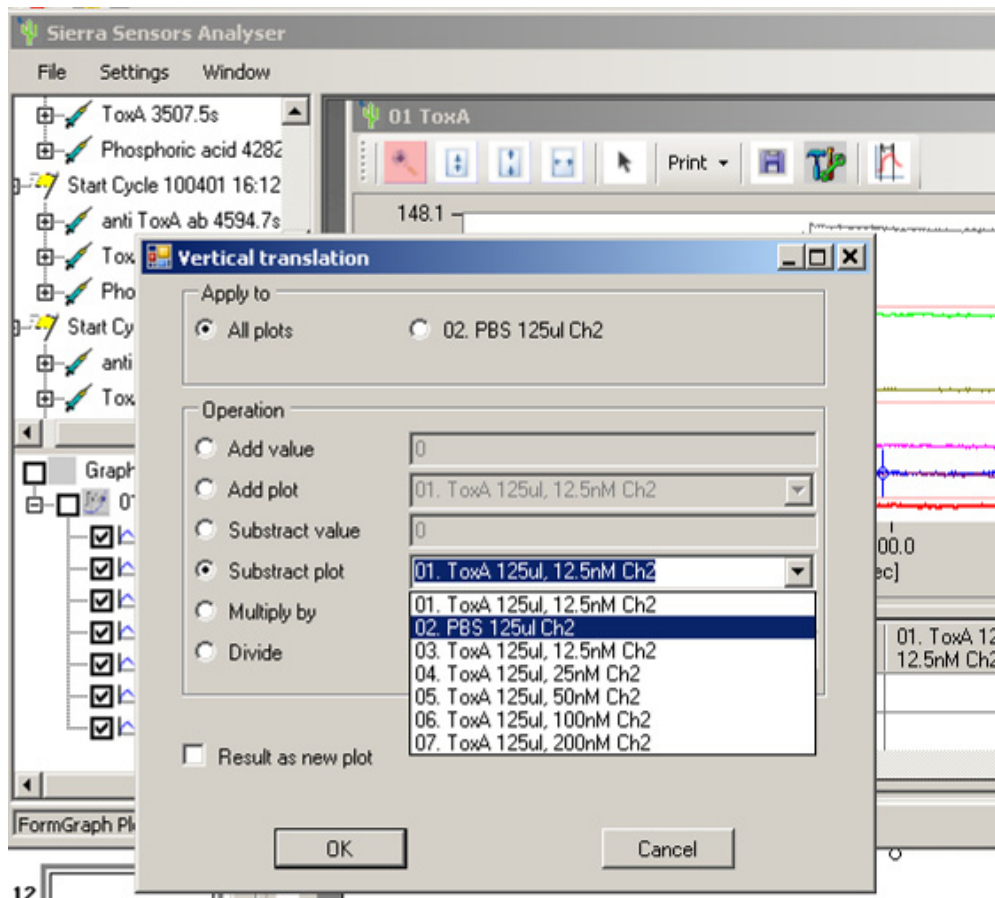


Figure 13: Subtract the buffer injection from "All plots"

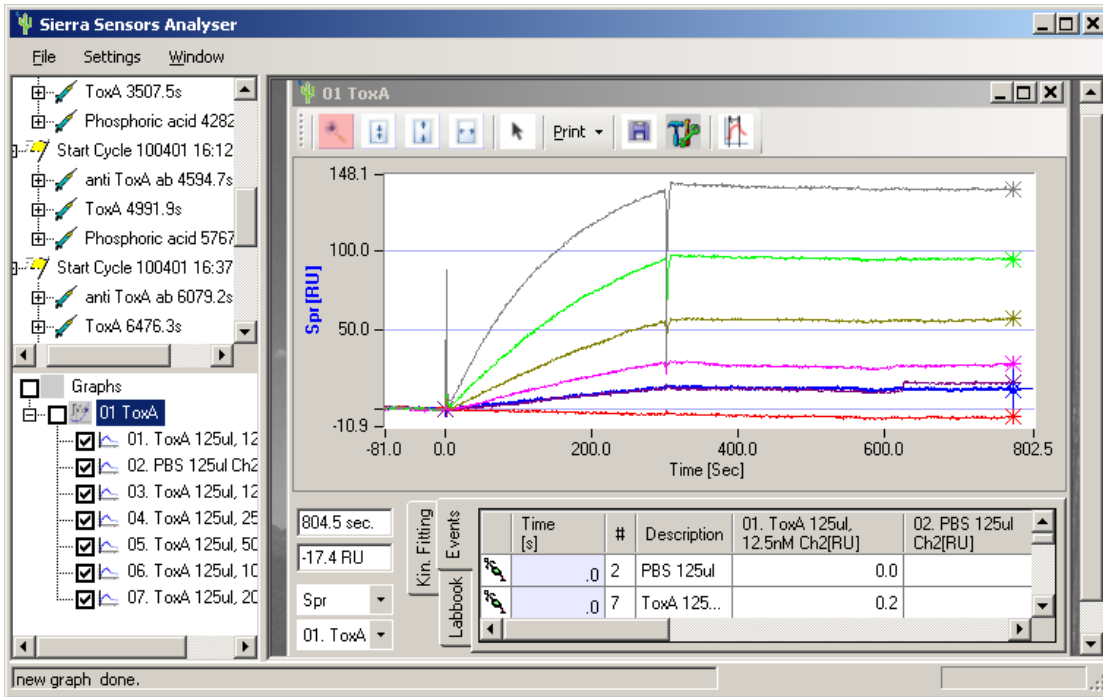


Figure 14: Overlay prior to buffer inject subtraction

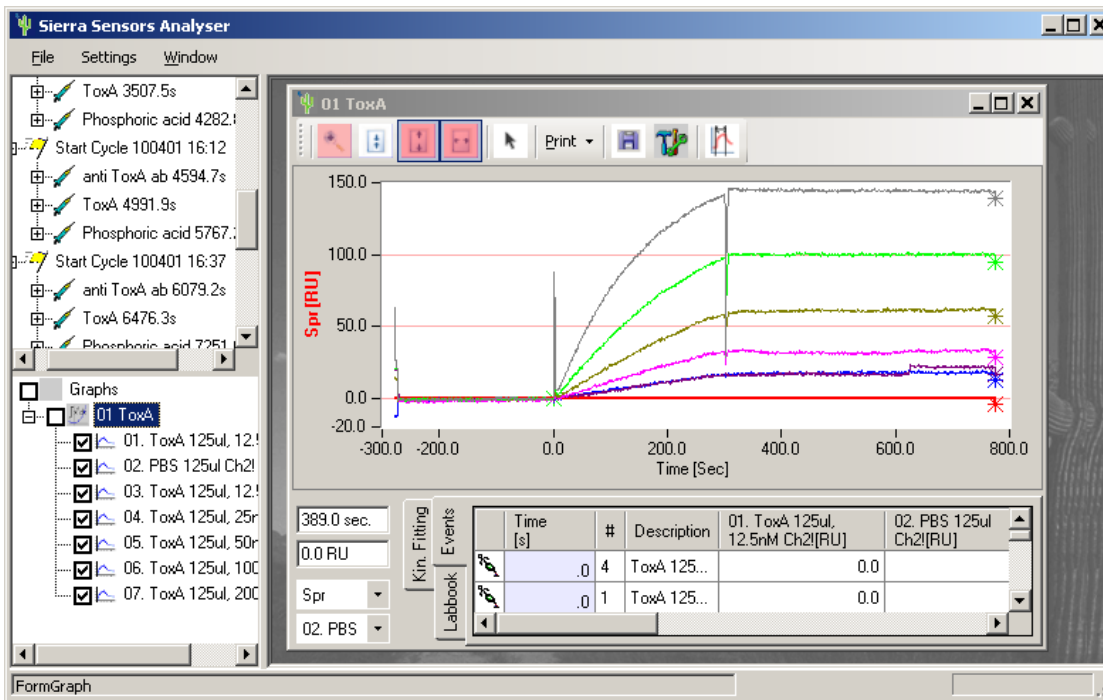


Figure 15: Overlay showing the double-subtracted data

Revision History:

Ver. 1-99	Issue [A-Z]	Description of Change	Date	Author
1		Initial version	15/1/10	KW
1	c	Parameter selection removed	31/8/10	KW