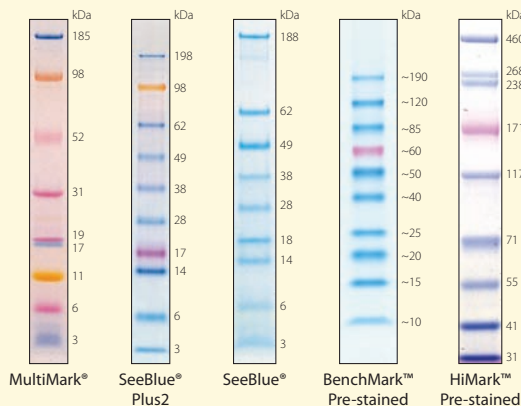
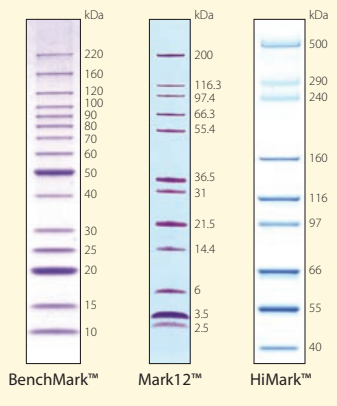


Protein standards for electrophoresis

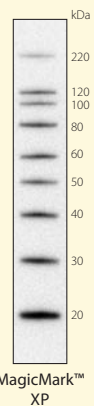
Pre-stained protein standards for easy and clear band identification



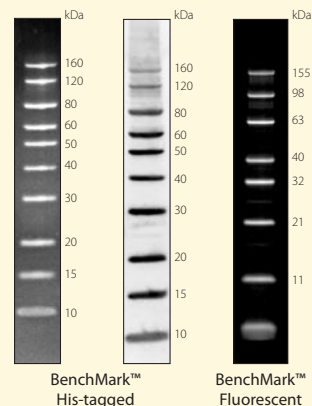
Unstained protein standards for accurate molecular weight estimation



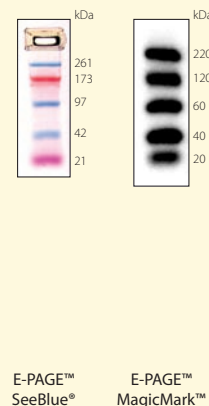
Protein standard for western blots*



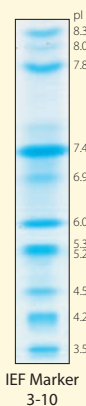
Specialty protein standards



Protein standards for E-PAGE™ 96 6% Gel



IEF Marker



Cat. no.	LC5725	LC5925	LC5625	10748-010	LC5699	10747-012	LC5677	LC5688	LC5602	LC5606	LC5928	LC5700	LC5701	39212-01
	NuPAGE® 4-12% Bis-Tris Gel w/MES SDS Buffer	NuPAGE® 4-12% Bis-Tris Gel w/MES SDS Buffer	NuPAGE® 4-12% Bis-Tris Gel w/MES SDS Buffer	Novex® 4-20% Tris Glycine Gel	NuPAGE® 3-8% Tris-Acetate Gel w/Tris-Acetate SDS buffer	NuPAGE® 4-12% Bis-Tris Gel w/MES, stained with Coomassie® R-250	NuPAGE® 4-12% Bis-Tris Gel w/MES, stained with Coomassie® R-250	NuPAGE® 3-8% Tris-Acetate Gel w/Tris-Acetate SDS buffer stained with SimplyBlue™ SafeStain	NuPAGE® Bis-Tris Gel Nitrocellulose, detected w/ WesternBreeze® Chemiluminescent Kit	NuPAGE® 4-12% Bis-Tris Gel w/MES buffer stained w/ InVision™ In-Gel His-tag Stain	NuPAGE® 4-12% Bis-Tris Gel w/MES SDS Buffer followed by WesternBreeze® Chemiluminescent Kit	E-PAGE™ 96 6% Gel	E-PAGE™ 96 6% Gel followed by WesternBreeze® Chemiluminescent Kit	Novex® pH 3-10 IEF Gel

* Helpful tip for western blot analysis:

Combine MagicMark™ XP Standard (LC5602) and SeeBlue® Plus2 or SeeBlue® Pre-stained Standard (LC5925 or LC5625) in the same run using the same lane. The bright blue SeeBlue® bands confirm gel run and transfer. Following immunodetection, sharp MagicMark™ XP bands develop directly on the western blot.

See reverse side for protein standards selection guide

Protein standards selection guide

	Pre-stained protein standards				Unstained protein standards			Western blot protein standard	Specialty protein standards		Protein standards for E-PAGE™ 96 6% Gel		IEF Marker	
	MultiMark®	SeeBlue® Plus2/SeeBlue®	BenchMark™ Pre-stained	HiMark™ Pre-stained HMW	BenchMark™ Ladder	Mark12™ Wide Range	HiMark™ HMW	MagicMark™ XP	BenchMark™ His-tagged	BenchMark™ Fluorescent	E-PAGE™ SeeBlue® Pre-stained	E-PAGE™ MagicMark™ Unstained	IEF Marker 3-10	
Application	SDS-PAGE	Good	Good	Tris-Glycine only	NuPAGE® Tris-Acetate & selected Tris-Glycine	Good	Good	NuPAGE® Tris-Acetate only	Good	Good	Good	E-PAGE™ 96 6% Gel	E-PAGE™ 96 6% Gel	N/A
	Western Blot	Good	Good	Good	Best for large protein analysis	Good	Good	Good	Best!	Good for Anti-His (C-term) antibody detection	Good	Best!	N/A	
	Detection w/UV Transillumination	N/A	N/A	N/A	N/A	N/A	N/A	N/A	N/A	Best for InVision™ In-Gel His-tag Stain	Best!	N/A	N/A	N/A
	Confirmation of Epitope-tagged Proteins	N/A	N/A	N/A	N/A	N/A	N/A	N/A	N/A	His-tagged	N/A	N/A	N/A	N/A
	Immediate Band Identification	Good	Good	Good	Good	N/A	N/A	N/A	See helpful tip for Western blot analysis on the reverse side	N/A	N/A	Good	N/A	N/A
	Sharp Bands	Good	Best!	Good	Good	Best!	Best!	Best!	Best!	Good	Good	Good	Best!	Good
	MW Estimation	Good	Good	Good	Best for large proteins	Best!	Best!	Best!	Best!	Best!	Good	Good	Best!	pl estimation
	Monitor Migration during Electrophoresis	Good	Good	Good	Good	N/A	N/A	N/A	See helpful tip for Western blot analysis on the reverse side	N/A	N/A	Good	N/A	N/A
	Silver Staining	Good	Good	Good	Good	Best!	Best!	Best!	Good	Good	N/A	Good	Good	Good
	MW/pl Range	4-250 kDa [†]	4-250 kDa [†]	~10-190 kDa [‡]	31-460 kDa [†]	10-220 kDa	2.5-200 kDa	40-500 kDa	20-200 kDa	10-160 kDa	11-155 kDa [†]	21-261 kDa	20-220 kDa	pl 3.5-10.7
IEF Gel	N/A	N/A	N/A	N/A	N/A	N/A	N/A	N/A	N/A	N/A	N/A	N/A	Best!	
Cat. no.	LC5725	LC5925/LC5625	10748-010	LC5699	10747-012	LC5677	LC5688	LC5602	LC5606	LC5928	LC5700	LC5701	39212-01	



[†] Apparent molecular weight values vary depending upon electrophoresis gel/buffer system. For more information, visit www.invitrogen.com or refer to product manual.

[‡] Lot-specific apparent molecular weight values for Tris-Glycine Gel are included with each vial.



These products may be covered by one or more Limited Use Label Licenses (See the Invitrogen catalog or www.invitrogen.com). By use of these products you accept the terms and conditions of all applicable Limited Use Label Licenses. For research use only. Not intended for any animal or human therapeutic or diagnostic use. ©2004 Invitrogen Corporation. All rights reserved. Reproduction forbidden without permission. Printed in the U.S.A.

Corporate headquarters:
1600 Faraday Avenue • Carlsbad, CA 92008 USA • Tel: 760 603 7200 • Fax: 760 602 6500 • Toll Free Tel: 800 955 6288 • E-mail: tech_service@invitrogen.com • www.invitrogen.com

European headquarters:
Invitrogen Ltd • Inchinnan Business Park • 3 Fountain Drive • Paisley PA4 9RF, UK • Tel: +44 (0) 141 814 6100 • Fax: +44 (0) 141 814 6260 • E-mail: eurotech@invitrogen.com