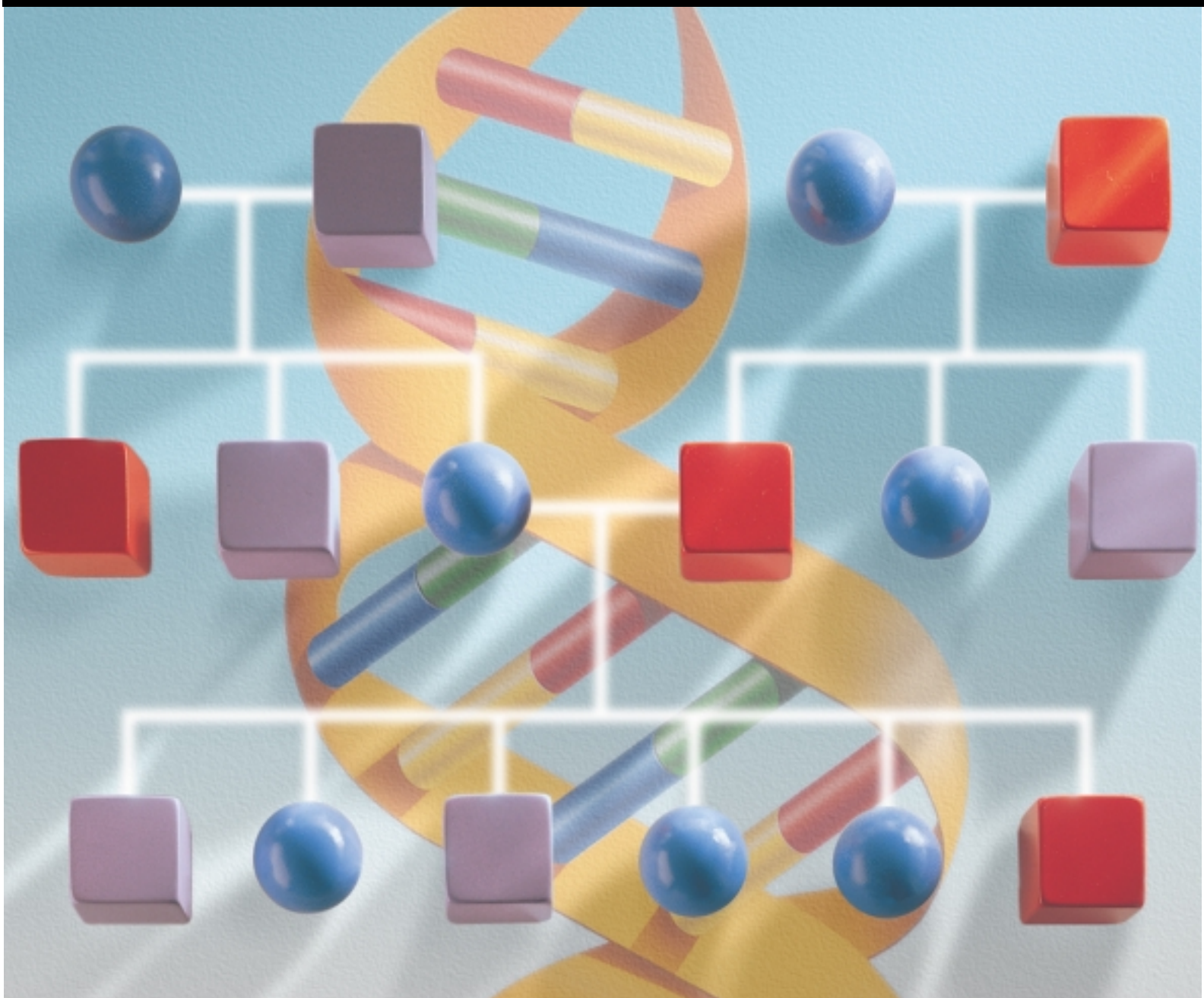


Linkage Mapping Sets

Version 2.5

Enabling 5-Dye Chemistry



Product Ordering Information

Description	Quantity Delivered	Part Number
ABI PRISM® Linkage Mapping Sets v. 2.5-HD5		
A complete set of linkage mapping primers at a 5cM resolution. 811 markers, in a set of 86 panels, are provided in individual tubes with one forward primer labeled on the 5' end with either 6-FAM™, VIC™, or NED™ dye and one unlabeled reverse primer. Custom defined reaction quantities require special price quotes and delivery times		
Complete ABI PRISM Linkage Mapping Sets v. 2.5-HD5	300 reactions	4328189
Complete ABI PRISM Linkage Mapping Sets v. 2.5-HD5	1,200 reactions	4329188
Complete ABI PRISM Linkage Mapping Sets v. 2.5-HD5	Custom user-defined	4329187
Individual panels 1–86 for HD5 and MD10	300 reactions	4329334 to 4329419
ABI PRISM® Human Linkage Mapping Sets v. 2.5-MD10		
A complete set of linkage mapping primers at a 10cM resolution. 400 markers, in a set of 28 panels, are provided in individual tubes with one forward primer labeled on the 5' end with either 6-FAM™, VIC™, or NED™ dye and one unlabeled reverse primer. Custom defined reaction quantities require special price quotes and delivery times		
Complete ABI PRISM Linkage Mapping Sets v. 2.5-MD10	50 reactions	4329186
Complete ABI PRISM Linkage Mapping Sets v. 2.5-MD10	300 reactions	4329185
Complete ABI PRISM Linkage Mapping Sets v. 2.5-MD10	1,200 reactions	4329184
Complete ABI PRISM Linkage Mapping Sets v. 2.5-MD10	Custom user-defined	4329183
ABI PRISM® Human Mapping Primers v. 2.5, for an individual locus		
ABI PRISM Human Mapping Primers v. 2.5 consists of single tubes of a forward primer labeled on the 5' end with either 6-FAM™, VIC™, or NED™ dye. The reverse primer is unlabeled.		
ABI PRISM Human Mapping Primers v. 2.5	300 reactions	4329191
ABI PRISM Human Mapping Primers v. 2.5	Custom user-defined	4329190

Worldwide Sales Offices

Applied Biosystems vast distribution and service network, composed of highly trained support and applications personnel, reaches into 150 countries on six continents. For international office locations, please call the division headquarters or refer to our Web site at www.appliedbiosystems.com.

Applera Corporation is committed to providing the world's leading technology and information for life scientists. Applera Corporation consists of the Applied Biosystems and Celera Genomics businesses.

Headquarters

850 Lincoln Centre Drive
Foster City, CA 94404 USA
Phone: 650.638.5800
Toll Free: 800.345.5224
Fax: 650.638.5884

For Research Use Only.
Not for use in diagnostic procedures.

AB (Design), 6-FAM, VIC, and NED are trademarks and ABI PRISM and its design and Applied Biosystems are registered trademarks of Applera Corporation or its subsidiaries in the US and certain other countries.

©2001 Applied Biosystems. All rights reserved.
Information subject to change without notice.

Printed in the USA, 10/2001, JPI
Publication 127M102-01