

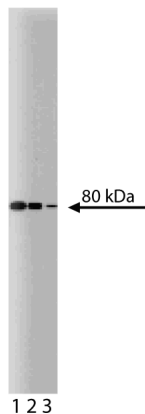
Technical Data Sheet

Purified Mouse Anti-Ezrin**Product Information**

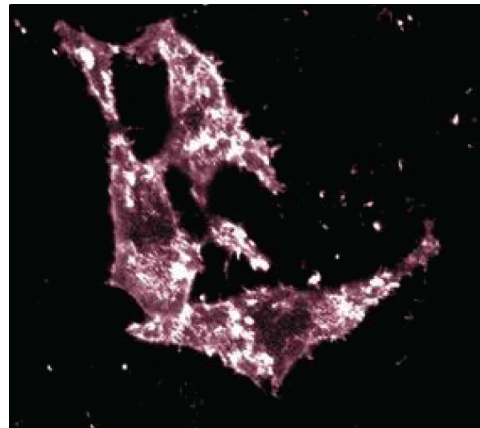
Material Number:	610603
Size:	150 µg
Concentration:	250 µg/ml
Clone:	18/Ezrin
Immunogen:	Human Ezrin aa. 391-515
Isotype:	Mouse IgG1
Reactivity:	QC Testing: Dog Tested in Development: Human
Target MW:	80 kDa
Storage Buffer:	Aqueous buffered solution containing BSA, glycerol, and ≤0.09% sodium azide.

Description

First described as an 80kDa protein concentrated in the apical cytoskeletal region of intestinal brush border cells, ezrin is now recognized as a major substrate of protein tyrosine kinases, such as the epidermal growth factor (EGF) tyrosine kinase. Ezrin is expressed at high levels in intestine, kidney, and placenta. In placenta, ezrin is present as monomers and non-covalent oligomers in tight association with actin microfilaments. In the human epidermoid carcinoma cell line A431, microvilli-like structures appear within 30 seconds after the addition of EGF. These structures give way to membrane ruffles after 2-5 minutes, followed by cell rounding after 10-20 minutes. At the same time, ezrin is recruited into these structures and oligomers are formed following its tyrosine phosphorylation. It is thought that tyrosine phosphorylation triggers the formation of ezrin oligomers.



Western blot analysis of Ezrin on MDCK lysate. Lane 1: 1:250, lane 2: 1:500, lane 3: 1:1000 dilution of anti-Ezrin.



Immunofluorescent staining of HeLa cells with anti-Ezrin antibody.

Preparation and Storage

The monoclonal antibody was purified from tissue culture supernatant or ascites by affinity chromatography. Store undiluted at -20° C.

BD Biosciences

www.bdbiosciences.com

United States	Canada	Europe	Japan	Asia Pacific	Latin America/Caribbean
877.232.8995	888.259.0187	32.53.720.550	0120.8555.90	65.6861.0633	55.11.5185.9995

For country-specific contact information, visit www.bdbiosciences.com/how_to_order/

Conditions: The information disclosed herein is not to be construed as a recommendation to use the above product in violation of any patents. BD Biosciences will not be held responsible for patent infringement or other violations that may occur with the use of our products. Purchase does not include or carry any right to resell or transfer this product either as a stand-alone product or as a component of another product. Any use of this product other than the permitted use without the express written authorization of Becton Dickinson and Company is strictly prohibited.

For Research Use Only. Not for use in diagnostic or therapeutic procedures. Not for resale.

BD, BD Logo and all other trademarks are the property of Becton, Dickinson and Company. ©2007 BD



Application Notes

Application

Western blot	Routinely Tested
Immunofluorescence	Tested During Development
Immunohistochemistry	Tested During Development
Immunoprecipitation	Not Recommended

Suggested Companion Products

Catalog Number	Name	Size	Clone
611635	MDCK Cell Lysate	500 µg	(none)
554002	HRP Goat Anti-Mouse Ig	1.0 ml	(none)
554001	FITC Goat Anti-Mouse Ig	0.5 mg	Polyclonal

Product Notices

1. Since applications vary, each investigator should titrate the reagent to obtain optimal results.
2. Please refer to www.bdbiosciences.com/pharmingen/protocols for technical protocols.
3. Caution: Sodium azide yields highly toxic hydrazoic acid under acidic conditions. Dilute azide compounds in running water before discarding to avoid accumulation of potentially explosive deposits in plumbing.
4. Source of all serum proteins is from USDA inspected abattoirs located in the United States.

References

- Anastasiadis PZ, Moon SY, Thoreson MA, et al. Inhibition of RhoA by p120 catenin. *Nat Cell Biol.* 2000; 2(9):637-644.(Clone-specific: Immunofluorescence)
- Berryman M, Gary R, Bretscher A. Ezrin oligomers are major cytoskeletal components of placental microvilli: a proposal for their involvement in cortical morphogenesis. *J Cell Biol.* 1995; 131(5):1231-1242.(Biology)
- Defacque H, Egeberg M, Habermann A, et al. Involvement of ezrin/moesin in de novo actin assembly on phagosomal membranes. *EMBO J.* 2000; 19(2):199-212.(Clone-specific: Western blot)
- Mohler PJ, Kreda SM, Boucher RC, Sudol M, Stutts MJ, Milgram SL. Yes-associated protein 65 localizes p62(c-Yes) to the apical compartment of airway epithelia by association with EBP50. *J Cell Biol.* 1999; 147(4):879-890.(Clone-specific: Immunofluorescence)
- Perez OD, Kinoshita S, Hitoshi Y, et al. Activation of the PKB/AKT pathway by ICAM-2. *Immunity.* 2002; 16(1):51-65.(Clone-specific: Immunoprecipitation, Western blot)