

# PANK2 (D11E2) Rabbit mAb (Mouse Specific)

✓ 100 µl  
(10 western blots)



**Orders** ■ 877-616-CELL (2355)  
orders@cellsignal.com  
**Support** ■ 877-678-TECH (8324)  
info@cellsignal.com  
**Web** ■ www.cellsignal.com

New 10/13

**For Research Use Only. Not For Use In Diagnostic Procedures.**

**Entrez Gene ID** #74450  
**UniProt ID** #Q7M753

Applications W, IP Endogenous	Species Cross-Reactivity* M	Molecular Wt. 49 kDa	Isotype Rabbit IgG**
-------------------------------------	--------------------------------	-------------------------	-------------------------

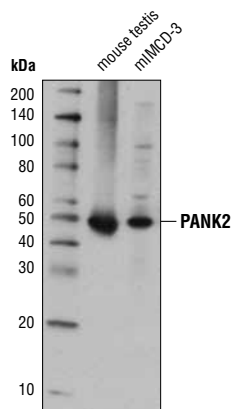
**Background:** PANK2, pantothenate kinase 2, catalyzes the first step in CoA biosynthesis (1,2). Human PANK2 is located in the mitochondria, and research studies have shown some mutations in human PANK2 are linked to neurodegeneration (2). Alternatively, mouse PANK2 localizes in the cytosol, and defective PANK2 in mice leads to retinal degeneration (1,3).

**Specificity/Sensitivity:** PANK2 (D11E2) Rabbit mAb (Mouse Specific) recognizes endogenous levels of total PANK2 protein.

**Source/Purification:** Monoclonal antibody is produced by immunizing animals with a synthetic peptide corresponding to residues surrounding Leu76 of mouse PANK2 protein.

## Background References:

- (1) Leonardi, R. et al. (2007) *FEBS Lett* 581, 4639-44.
- (2) Zhang, Y.M. et al. (2006) *J Biol Chem* 281, 107-14.
- (3) Kuo, Y.M. et al. (2005) *Hum Mol Genet* 14, 49-57.



Western blot analysis of extracts from mouse testis and mIMCD-3 cells using PANK2 (D11E2) Rabbit mAb (Mouse Specific).

**Storage:** Supplied in 10 mM sodium HEPES (pH 7.5), 150 mM NaCl, 100 µg/ml BSA, 50% glycerol and less than 0.02% sodium azide. Store at -20°C. Do not aliquot the antibody.

**\*Species cross-reactivity is determined by western blot.**

**\*\*Anti-rabbit secondary antibodies must be used to detect this antibody.**

## Recommended Antibody Dilutions:

Western blotting	1:1000
Immunoprecipitation	1:50

**For product specific protocols please see the web page for this product at [www.cellsignal.com](http://www.cellsignal.com).**

**Please visit [www.cellsignal.com/companion](http://www.cellsignal.com/companion) for a complete listing of recommended companion products.**

**IMPORTANT:** For western blots, incubate membrane with diluted antibody in 5% w/v BSA, 1X TBS, 0.1% Tween® 20 at 4°C with gentle shaking, overnight.

Tween® is a registered trademark of ICI Americas, Inc.

**Applications Key:** W—Western IP—Immunoprecipitation IHC—Immunohistochemistry ChIP—Chromatin Immunoprecipitation IF—Immunofluorescence F—Flow cytometry E-P—ELISA-Peptide  
**Species Cross-Reactivity Key:** H—human M—mouse R—rat Hm—hamster Mk—monkey Mi—mink C—chicken Dm—D. melanogaster X—Xenopus Z—zebrafish B—bovine  
Dg—dog Pg—pig Sc—S. cerevisiae Ce—C. elegans Hr—horse All—all species expected Species enclosed in parentheses are predicted to react based on 100% homology.