



Solution phase IEF for proteomic analysis



The ZOOM® IEF Fractionator is designed to fractionate complex samples by isoelectric point (pI) prior to 2DE, 1DE, or 2D LC/MS analysis in a mini-cell format. It provides a simple, convenient, and reliable method to reduce sample complexity, enrich low abundance proteins, as well as increase the dynamic range of detection. The ZOOM® IEF Fractionator employs ready-to-use immobilized buffer disks to fractionate samples into desired pI ranges, at a scale and cost accessible to any lab.

Reproducibility and reliability

The ZOOM® IEF Fractionator uses unique immobilized buffer disks (ZOOM® Disks) to conveniently ensure consistent fractionation from run to run (Figure 1). ZOOM® Disks are gel-based, disposable, and designed for single use to minimize any chance of cross-contamination. The range of disks currently available (pH 3.0, 4.6, 5.4, 6.2, 7.0, 9.1, 10.0, 12.0) allows the fractionation of samples up to six fractions. ZOOM® Disks are supplied ready-to-use, eliminating any preparation steps.

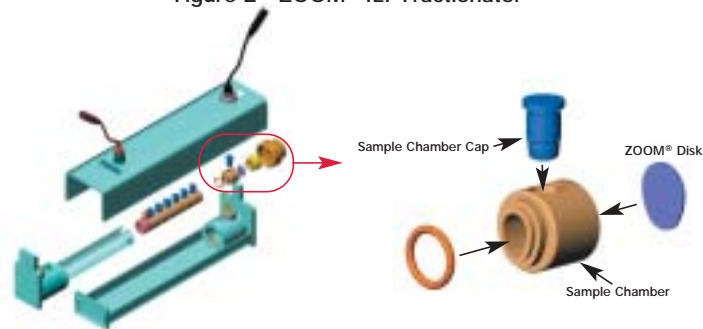
Figure 1 - Immobilized buffer ZOOM® Disks



Easy set-up and run

The ZOOM® IEF Fractionator is designed to be user-friendly, while its small volume capability (650 µl of sample/chamber) uses expensive reagents sparingly. Its integrated anode and cathode buffer chambers, as well as its removable electrode assembly, make it easy to set up, load, and recover samples.

Figure 2 - ZOOM® IEF Fractionator

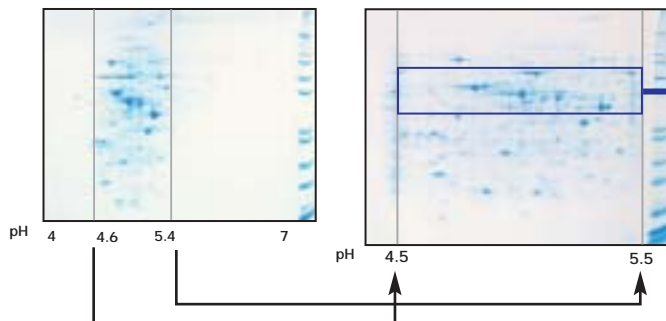


Clear, consistent results

The ZOOM® IEF Fractionator provides the reliability you need for successful biomarker discovery for downstream applications. To demonstrate, rat liver lysate (RLL) was

fractionated using the ZOOM® IEF Fractionator, followed by analysis of the fractions using broad range (pH 4-7) and narrow range (pH 4.5-5.5) ZOOM® Strips (Figure 3).

Figure 3 - 2DE of the pH 4.6 to 5.4 rat liver lysate fraction on a pH 4.5-5.5 narrow range ZOOM® Strip



A 140 µl portion of the 4.6 to 5.4 fraction of fractionated rat liver lysate was loaded on a pH 4.5-5.5 narrow range ZOOM® Strip and allowed to rehydrate before focusing the applied proteins in the ZOOM® IPGRRunner™ System. The focused ZOOM® Strips were applied to NuPAGE® Novex 4-12% Bis-Tris ZOOM® gels. The resulting 2DE gels were stained with SimplyBlue™ SafeStain and scanned.

Ordering information

Increase the resolution and detection of your protein samples with the simplicity, speed, and savings that the ZOOM® IEF Fractionator can offer. Order yours today.

Product	Quantity	Cat. no.	Product	Quantity	Cat. no.
ZOOM® IEF Fractionator Combo Kit	1 kit*	ZF10001	ZOOM® Focusing Buffer pH 3-7 (100X)	10 ml	ZB10037
ZOOM® Basic Protein Combo Kit	1 kit	ZF10003	ZOOM® Focusing Buffer pH 7-12 (100X)	10 ml	ZB10712
ZOOM® IEF Fractionator ζ	1 ea	ZF10002	ZOOM® Cathode Buffer pH 9-12 (10X)	100 ml	ZC10912
ZOOM® Disk pH 3.0	10 disks/pack	ZD10030	ZOOM® Carrier Ampholytes pH 3-10	10 ml	ZM0021
ZOOM® Disk pH 4.6	10 disks/pack	ZD10046	Novex® IEF Anode Buffer (50X)	100 ml	LC5300
ZOOM® Disk pH 5.4	10 disks/pack	ZD10054	Novex® IEF Cathode Buffer (10X)	125 ml	LC5310
ZOOM® Disk pH 6.2	10 disks/pack	ZD10062	ZOOM® 2D Protein Solubilizer 1	4 x 5 ml	ZS10001
ZOOM® Disk pH 7.0	10 disks/pack	ZD10070	ZOOM® 2D Protein Solubilizer 2	4 x 5 ml	ZS10002
ZOOM® Disk pH 9.1	10 disks/pack	ZD10091	ZOOM® 2D Protein Solubilizer Kit	2 x 5 ml	ZS10003
ZOOM® Disk pH 10.0	10 disks/pack	ZD10010	ZOOM® Urea	1 kg	ZU10001
ZOOM® Disk pH 12.0	10 disks/pack	ZD10120	ZOOM® Thiourea	1 kg	ZT10002
ZOOM® Strip pH3-10L	12 strips/pack	ZM0018	ZOOM® CHAPS	5 g	ZC10003
ZOOM® Strip pH 9-12	12 strips/pack	ZM0017			

* Includes all items in the quantity listed: ZOOM® IEF Fractionator; one pack ZOOM® Disks of each pH; urea; thiourea; CHAPS; carrier ampholytes pH 3-10; anode and cathode buffers.



The ZOOM® IEF Fractionator was in part developed pursuant to a license from The Wistar Institute of Anatomy and Biology, located in Philadelphia, Pennsylvania. Established in 1892, The Wistar Institute was the first independent medical research facility in the United States.

These products may be covered by one or more Limited Use Label Licenses (See the Invitrogen catalog or our web site, www.invitrogen.com). By the use of these products you accept the terms and conditions of all applicable Limited Use Label Licenses.

For research use only. Not intended for any animal or human therapeutic or diagnostic use. Printed in the U.S.A. ©2003 Invitrogen Corporation. All rights reserved. Reproduction forbidden without permission.

Corporate headquarters:

1600 Faraday Avenue • Carlsbad, CA 92008 USA • Tel: 760 603 7200 • Fax: 760 602 6500 • Toll Free Tel: 800 955 6288 • E-mail: tech_service@invitrogen.com • www.invitrogen.com

European headquarters:

Invitrogen Ltd • Inchinnan Business Park • 3 Fountain Drive • Paisley PA4 9RF, UK • Tel: +44 (0) 141 814 6100 • Fax: +44 (0) 141 814 6260 • E-mail: eurotech@invitrogen.com