

Contents

1. Description
 - 1.1 Principle of the MACS® Separation
 - 1.2 Background information
 - 1.3 Applications
 - 1.4 Reagent and instrument requirements
2. Protocol
 - 2.1 Sample preparation
 - 2.2 Magnetic labeling
 - 2.3 Magnetic separation
3. Example of a separation using the CD45RA MicroBeads
4. References

1. Description

Components	2 mL CD45RA MicroBeads, human: MicroBeads conjugated to monoclonal anti-human CD45RA antibodies (isotype: mouse IgG1).
Capacity	For 10 ⁹ total cells, up to 100 separations.
Product format	CD45RA MicroBeads are supplied in buffer containing stabilizer and 0.05% sodium azide.
Storage	Store protected from light at 2–8 °C. Do not freeze. The expiration date is indicated on the vial label.

1.1 Principle of the MACS® Separation

First, the CD45RA⁺ cells are magnetically labeled with CD45RA MicroBeads. Then, the cell suspension is loaded onto a MACS® Column, which is placed in the magnetic field of a MACS Separator. The magnetically labeled CD45RA⁺ cells are retained within the column. The unlabeled cells run through; this cell fraction is thus depleted of CD45RA⁺ cells. After removing the column from the magnetic field, the magnetically retained CD45RA⁺ cells can be eluted as the positively selected cell fraction.

1.2 Background information

CD45RA MicroBeads have been developed for direct magnetic labeling of lymphocyte subsets. CD45RA is expressed on CD4⁺ and CD8⁺ T cell subsets, as well as on subsets of B and NK cells. The CD45RA antibody recognizes the 220 kDa isoform of the leukocyte common antigen (LCA).

CD45RA MicroBeads can be used for the positive selection or depletion of CD45RA⁺ cells. For isolation of CD45RA⁺ T cell subsets the CD45RA MicroBeads can be combined with MACS CD4⁺ and CD8⁺ T Cell Isolation Kits or CD4⁺ and CD8⁺ MultiSort Kits^{1,2}.

1.3 Applications

- Depletion of human CD45RA⁺ cells from peripheral blood or lymphoid tissue for further selection of CD45RA⁻ memory T cell subsets.
- Positive selection or depletion of human CD45RA⁺ naive T cells from preselected CD4⁺ or CD8⁺ cells isolated from peripheral blood using MACS Cell Isolation Kits, or from lymphoid tissue using MACS MultiSort Kits^{1,2}.
- Isolation of human CD45RO⁺ memory T cells from presorted CD4⁺ or CD8⁺ cells by depletion of CD45RA⁺ cells.³⁻⁵

1.4 Reagent and instrument requirements

- **Buffer:** Prepare a solution containing phosphate-buffered saline (PBS), pH 7.2, 0.5% bovine serum albumin (BSA), and 2 mM EDTA by diluting MACS BSA Stock Solution (# 130-091-376) 1:20 with autoMACS™ Rinsing Solution (# 130-091-222). Keep buffer cold (2–8 °C). Degas buffer before use, as air bubbles could block the column.
 - ▲ **Note:** EDTA can be replaced by other supplements such as anticoagulant citrate dextrose formula-A (ACD-A) or citrate phosphate dextrose (CPD). BSA can be replaced by other proteins such as human serum albumin, human serum, or fetal bovine serum. Buffers or media containing Ca²⁺ or Mg²⁺ are not recommended for use.
- **MACS Columns and MACS Separators:** CD45RA⁺ cells can be enriched by using MS, LS, or XS Columns or depleted with the use of LD, CS, or D Columns. Cells which strongly express the CD45RA antigen can also be depleted using MS, LS, or XS Columns. Positive selection or depletion can also be performed by using the autoMACS or the autoMACS Pro Separator.

Column	Max. number of labeled cells	Max. number of total cells	Separator
Positive selection			
MS	10 ⁷	2×10 ⁸	MiniMACS, OctoMACS, VarioMACS, SuperMACS
LS	10 ⁸	2×10 ⁹	MidiMACS, QuadroMACS, VarioMACS, SuperMACS
XS	10 ⁹	2×10 ¹⁰	SuperMACS
Depletion			
LD	10 ⁸	5×10 ⁸	MidiMACS, QuadroMACS, VarioMACS, SuperMACS
CS	2×10 ⁸		VarioMACS, SuperMACS
D	10 ⁹		SuperMACS
Positive selection or depletion			
autoMACS	2×10 ⁸	4×10 ⁹	autoMACS, autoMACS Pro

▲ **Note:** Column adapters are required to insert certain columns into the VarioMACS™ or SuperMACS™ Separators. For details see the respective MACS Separator data sheet.

- (Optional) Fluorochrome-conjugated antibodies for flow cytometric analysis, e.g., CD45RA-FITC (# 130-092-247), CD45RA-PE (# 130-092-248), CD4-FITC (# 130-080-501), CD4-PE (# 130-091-231), CD8-FITC (# 130-080-601), or CD8-PE (# 130-091-084). For more information about other fluorochrome conjugates see www.miltenyibiotec.com.
- (Optional) Propidium Iodide Solution (# 130-093-233) or 7-AAD for flow cytometric exclusion of dead cells.
- (Optional) Dead Cell Removal Kit (# 130-090-101) for the depletion of dead cells.
- (Optional) Pre-Separation Filters (# 130-041-407) to remove cell clumps.

2. Protocol

2.1 Sample preparation

When working with anticoagulated peripheral blood or buffy coat, peripheral blood mononuclear cells (PBMCs) should be isolated by density gradient centrifugation, for example, using Ficoll-Paque™. For details see the General Protocols section of the respective separator user manual. The General Protocols are also available at www.miltenyibiotec.com/protocols.

▲ **Note:** To remove platelets after density gradient separation, resuspend cell pellet in buffer and centrifuge at 200×g for 10–15 minutes at 20 °C. Carefully aspirate supernatant. Repeat washing step.

When working with tissues or lysed blood, prepare a single-cell suspension using standard methods. For details see the General Protocols section of the respective separator user manual. The General Protocols are also available at www.miltenyibiotec.com/protocols.

▲ Dead cells may bind non-specifically to MACS MicroBeads. To remove dead cells, we recommend using density gradient centrifugation or the Dead Cell Removal Kit (# 130-090-101).



2.2 Magnetic labeling

▲ Work fast, keep cells cold, and use pre-cooled solutions. This will prevent capping of antibodies on the cell surface and non-specific cell labeling.

▲ Volumes for magnetic labeling given below are for up to 10^7 total cells. When working with fewer than 10^7 cells, use the same volumes as indicated. When working with higher cell numbers, scale up all reagent volumes and total volumes accordingly (e.g. for 2×10^7 total cells, use twice the volume of all indicated reagent volumes and total volumes).

▲ For optimal performance it is important to obtain a single-cell suspension before magnetic separation. Pass cells through 30 μ m nylon mesh (Pre-Separation Filters, # 130-041-407) to remove cell clumps which may clog the column. Wet filter with buffer before use.

▲ If CD45RA MicroBeads are used for positive selection of CD45RA⁺ T helper or cytotoxic/suppressor cells in combination with the CD4 or CD8 MultiSort Kit, we recommend using a 1:20 dilution (instead of 1:5) for the magnetic labeling. This increases the purity of the CD4⁺CD45RA⁺ and CD8⁺CD45RA⁺ cells but may decrease the recovery.

▲ The recommended incubation temperature is 2–8 °C. Working on ice may require increased incubation times. Higher temperatures and/or longer incubation times may lead to non-specific cell labeling.

1. Determine cell number.
2. Centrifuge cell suspension at 300×g for 10 minutes. Aspirate supernatant completely.
3. Resuspend cell pellet in 80 μ L of buffer per 10^7 total cells.
4. Add 20 μ L of CD45RA MicroBeads per 10^7 total cells.
5. Mix well and incubate for 15 minutes in the refrigerator (2–8 °C).
6. (Optional) Add staining antibodies, e.g., 10 μ L of CD45RA-PE (# 130-092-248), and incubate for 5 minutes in the dark in the refrigerator (2–8 °C).
7. Wash cells by adding 1–2 mL of buffer per 10^7 cells and centrifuge at 300×g for 10 minutes. Aspirate supernatant completely.
8. Resuspend up to 10^8 cells in 500 μ L of buffer.
 - ▲ **Note:** For higher cell numbers, scale up buffer volume accordingly.
 - ▲ **Note:** For depletion with LD Columns, resuspend up to 1.25×10^8 cells in 500 μ L of buffer.
9. Proceed to magnetic separation (2.3).



2.3 Magnetic separation

▲ Choose an appropriate MACS Column and MACS Separator according to the number of total cells and the number of CD45RA⁺ cells. For details see table in section 1.4.

Magnetic separation with MS or LS Columns

1. Place column in the magnetic field of a suitable MACS Separator. For details see the respective MACS Column data sheet.
2. Prepare column by rinsing with the appropriate amount of buffer:
 - MS: 500 μ L LS: 3 mL
3. Apply cell suspension onto the column.
4. Collect unlabeled cells that pass through and wash column with the appropriate amount of buffer. Collect total effluent; this is the unlabeled cell fraction. Perform washing steps by adding buffer three times. Only add new buffer when the column reservoir is empty.
 - MS: 3×500 μ L LS: 3×3 mL
5. Remove column from the separator and place it on a suitable collection tube.
6. Pipette the appropriate amount of buffer onto the column. Immediately flush out the magnetically labeled cells by firmly pushing the plunger into the column.
 - MS: 1 mL LS: 5 mL
7. (Optional) To increase the purity of CD45RA⁺ cells, the eluted fraction can be enriched over a second MS or LS Column. Repeat the magnetic separation procedure as described in steps 1 to 6 by using a new column.

Magnetic separation with XS Columns

For instructions on the column assembly and the separation refer to the XS Column data sheet.

Depletion with LD Columns

1. Place LD Column in the magnetic field of a suitable MACS Separator. For details see LD Column data sheet.
2. Prepare column by rinsing with 2 mL of buffer.
3. Apply cell suspension onto the column.
4. Collect unlabeled cells that pass through and wash column with 2×1 mL of buffer. Collect total effluent; this is the unlabeled cell fraction. Perform washing steps by adding buffer two times. Only add new buffer when the column reservoir is empty.

Depletion with CS Columns

1. Assemble CS Column and place it in the magnetic field of a suitable MACS Separator. For details see CS Column data sheet.
2. Prepare column by filling and rinsing with 60 mL of buffer. Attach a 22G flow resistor to the 3-way stopcock of the assembled column. For details see CS Column data sheet.
3. Apply cell suspension onto the column.
4. Collect unlabeled cells that pass through and wash column with 30 mL buffer from the top. Collect total effluent; this is the unlabeled cell fraction.

Depletion with D Columns

For instructions on column assembly and separation refer to the D Column data sheet.

Magnetic separation with the autoMACS™ Separator or the autoMACS™ Pro Separator

▲ Refer to the respective user manual for instructions on how to use the autoMACS™ Separator or the autoMACS Pro Separator.

▲ Buffers used for operating the autoMACS Separator or the autoMACS Pro Separator should have a temperature of ≥ 10 °C.

▲ Program choice depends on the isolation strategy, the strength of magnetic labeling, and the frequency of magnetically labeled cells. For details refer to the section describing the cell separation programs in the respective user manual.

Magnetic separation with the autoMACS™ Separator

1. Prepare and prime the instrument.
2. Apply tube containing the sample and provide tubes for collecting the labeled and unlabeled cell fractions. Place sample tube at the uptake port and the fraction collection tubes at port neg1 and port pos1.
3. For a standard separation choose one of the following programs:
Positive selection: "Possel"
Collect positive fraction from outlet port pos1.
Depletion: "Depletes"
Collect negative fraction from outlet port neg1.

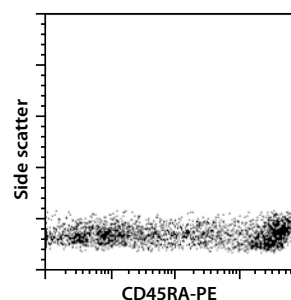
Magnetic separation with the autoMACS™ Pro Separator

1. Prepare and prime the instrument.
2. Apply tube containing the sample and provide tubes for collecting the labeled and unlabeled cell fractions. Place sample tube in row A of the tube rack and the fraction collection tubes in rows B and C.
3. For a standard separation choose one of the following programs:
Positive selection: "Possel"
Collect positive fraction in row C of the tube rack.
Depletion: "Depletes"
Collect negative fraction in row B of the tube rack.

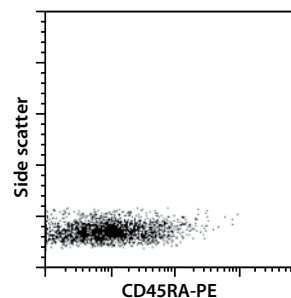
3. Example of a separation using the CD45RA MicroBeads

CD45RA⁺ cells were separated from human PBMCs using the CD45RA MicroBeads. CD45RA⁺ cells were isolated using an MS Column and a MiniMACS™ Separator. Cells are fluorescently stained with CD45RA-PE. Cell debris and dead cells are excluded from the analysis based on scatter signals and PI fluorescence.

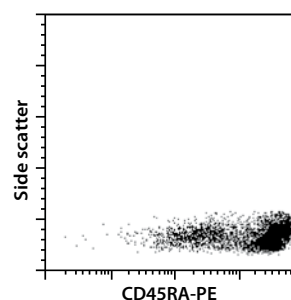
PBMCs before separation



CD45RA⁻ cells



CD45RA⁺ cells



4. References

1. Wolthers, K. C. *et al.* (1999) Normal T cell telomerase activity and upregulation in human immunodeficiency virus-1 infection. *Blood* 93: 1011–1019. [570]
2. Jonuleit, H. *et al.* (2000) Induction of interleukin 10-producing, nonproliferating CD4(+) T cells with regulatory properties by repetitive stimulation with allogeneic immature human dendritic cells. *J. Exp. Med.* 192: 1213–1222. [978]
3. Mattila, P. S. *et al.* (2000) Adenoids provide a microenvironment for the generation of CD4⁺, CD45RO⁺, L-selectin⁻, CXCR4⁺, CCR5⁺ T lymphocytes, a lymphocyte phenotype found in the middle ear effusion. *Int. Immunol.* 12: 1235–1243. [930]
4. Matsushima, T. *et al.* (2001) Receptor binding cancer antigen expressed on SiSo cells, a novel regulator of apoptosis of erythroid progenitor cells. *Blood* 98: 313–321. [2275]
5. Akdis, M. *et al.* (1999) Skin homing (cutaneous lymphocyte-associated antigen-positive) CD8⁺ T cells respond to superantigen and contribute to eosinophilia and IgE production in atopic dermatitis. *J. Immunol.* 163: 466–475. [862]

All protocols and data sheets are available at www.miltenyibiotec.com.

Warnings

Reagents contain sodium azide. Under acidic conditions sodium azide yields hydrazoic acid, which is extremely toxic. Azide compounds should be diluted with running water before discarding. These precautions are recommended to avoid deposits in plumbing where explosive conditions may develop.

Warranty

The products sold hereunder are warranted only to be free from defects in workmanship and material at the time of delivery to the customer. Miltenyi Biotec GmbH makes no warranty or representation, either expressed or implied, with respect to the fitness of a product for a particular purpose. There are no warranties, expressed or implied, which extend beyond the technical specifications of the products. Miltenyi Biotec GmbH's liability is limited to either replacement of the products or refund of the purchase price. Miltenyi Biotec GmbH is not liable for any property damage, personal injury or economic loss caused by the product.

MACS is a registered trademark and autoMACS, MidiMACS, MiniMACS, OctoMACS, QuadroMACS, SuperMACS, and VarioMACS are trademarks of Miltenyi Biotec GmbH.

Ficoll-Paque is a trademark of GE Healthcare companies.

Copyright © 2008 Miltenyi Biotec GmbH. All rights reserved.