



Rabbit (polyclonal) Anti-Human Amyloid β N-Terminal Antiserum

PRODUCT ANALYSIS SHEET

Catalog Number:	AHB0121
Lot Number:	See product label
Quantity/Volume:	100 μ L
Form of Antibody:	Processed whole rabbit serum
Preservation:	0.1% sodium azide (Caution: sodium azide is a poisonous and hazardous substance. Handle with care and dispose of properly.)
Immunogen:	A synthetic peptide corresponding to aa sequence 1-14 ($_1$ DAEFRHDSGYEVHH $_{14}$) of the human amyloid β protein.
Specificity:	<p>This antibody recognizes Amyloid β peptide. Amyloid β ($A\beta$) accumulates in the senile plaques of the brain during Alzheimer's disease and during certain classes of cerebrovascular angiopathy. $A\beta$ generation is initiated by proteolytic cleavage of the Amyloid Precursor Protein (APP) by β-secretase (BACE) at a site which corresponds to the $A\beta$ N terminus. A second proteolytic cleavage by γ-secretase at a site corresponding to the $A\beta$ C terminus releases the $A\beta$ peptide. The insoluble $A\beta$ peptide forms aggregates in the vessels and senile plaques of Alzheimer's disease brains.</p> <p>This antiserum can routinely be used without further purification.</p>
Species Reactivity:	Human. Other species were not tested. This antiserum will discriminate amyloid β from other CNS amyloids.
Applications:	This antiserum is suitable for use in ELISA and immunohistochemistry.
Suggested Working Dilutions:	For ELISA, a dilution of $\geq 1:1,000$ is recommended. For IHC using formalin-fixed, paraffin-embedded sections, a dilution of $\geq 1:200$ is recommended. The optimal concentration should be determined for each specific application.
Recommended Positive Control:	Alzheimer's disease brain.
Storage:	Store at 2-8°C. For long term storage, apportion into working aliquots and store at -20°C. Avoid repeated freeze-thaw cycles to avoid denaturing the antibody.
Expiration Date:	Expires one year from date of receipt when stored as instructed.

This product is for research use only. Not for use in diagnostic procedures.

www.invitrogen.com

Invitrogen Corporation • 542 Flynn Rd • Camarillo • CA 93012 • Tel: 800.955.6288 • E-mail: techsupport@invitrogen.com

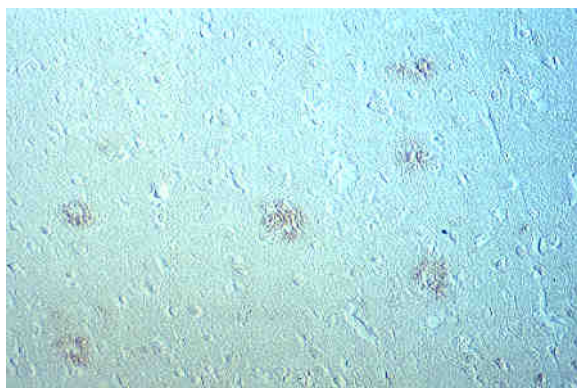
PI AHB0121

(Rev 10/08) DCC-08-1089

Important Licensing Information - These products may be covered by one or more Limited Use Label Licenses (see the Invitrogen Catalog or our website, www.invitrogen.com). By use of these products you accept the terms and conditions of all applicable Limited Use Label Licenses. Unless otherwise indicated, these products are for research use only and are not intended for human or animal diagnostic, therapeutic or commercial use.



Alzheimer's disease brain showing immunohistochemical staining of vessels containing amyloid β deposits at 1:200 dilution in formalin-fixed, paraffin-embedded, formic-acid-treated section of hippocampus.



Alzheimer's disease brain showing immunohistochemical staining of amyloid cores in senile plaques containing amyloid β deposits at 1:200 dilution in formalin-fixed, paraffin-embedded, formic-acid-treated section of hippocampus.

This product is for research use only. Not for use in diagnostic procedures.

www.invitrogen.com

Invitrogen Corporation • 542 Flynn Rd • Camarillo • CA 93012 • Tel: 800.955.6288 • E-mail: techsupport@invitrogen.com

PI AHB0121

(Rev 10/08) DCC-08-1089

Important Licensing Information - These products may be covered by one or more Limited Use Label Licenses (see the Invitrogen Catalog or our website, www.invitrogen.com). By use of these products you accept the terms and conditions of all applicable Limited Use Label Licenses. Unless otherwise indicated, these products are for research use only and are not intended for human or animal diagnostic, therapeutic or commercial use.