



# Rabbit (polyclonal) Anti-Human Neurofibrillary Tangle Antiserum

## PRODUCT ANALYSIS SHEET

<b>Catalog Number:</b>	AHB0161
<b>Lot Number:</b>	See product label
<b>Quantity/Volume:</b>	100 µL
<b>Form of Antibody:</b>	Processed whole rabbit serum
<b>Preservation:</b>	0.1% sodium azide (Caution: sodium azide is a poisonous and hazardous substance. Handle with care and dispose of properly.)
<b>Immunogen:</b>	Insoluble NFT which were extracted in boiling sodium dodecyl sulfate, purified by sucrose gradient centrifugation and disaggregated by sonication.
<b>Target:</b>	This antibody recognizes neurofibrillary tangles, both intracellular and extracellular. Neurofibrillary tangles are the hallmark lesions of Alzheimer's disease (AD). These tangles contain Paired Helical Filaments (PHF), which are insoluble structures composed of a highly phosphorylated form of the microtubule-associated protein tau, and associated lipid. This antiserum can routinely be used without further purification.
<b>Species Reactivity:</b>	Human. Other species were not tested.
<b>Applications:</b>	This antiserum is suitable for use in ELISA, immunohistochemistry and Western blot analysis.
<b>Suggested Working Dilutions:</b>	For ELISA a dilution of $\geq 1:4,000$ is recommended. For immunohistochemistry using formalin-fixed, paraffin-embedded sections, a dilution of $\geq 1:200$ and paraformaldehyde-fixed, frozen sections, a dilution of $\geq 1:2,000$ is recommended. For Western blots, a dilution of $\geq 1:500$ is recommended. The optimal concentration should be determined for each specific application.
<b>Recommended Positive Control:</b>	Alzheimer's disease brain.
<b>Storage:</b>	Store at 2-8°C. For long term storage, apportion into working aliquots and store at -20°C. Avoid repeated freeze-thaw cycles to prevent denaturing the antibody.
<b>Expiration Date:</b>	Expires one year from date of receipt when stored as instructed.
<b>References:</b>	Sparkman, D. R., <i>et al.</i> (1990) Production and characterization of a monospecific antiserum (A128) to disaggregated Alzheimer paired helical filaments. J. Histochem. Cytochem. 38:703-715.

**This product is for research use only. Not for use in diagnostic procedures.**

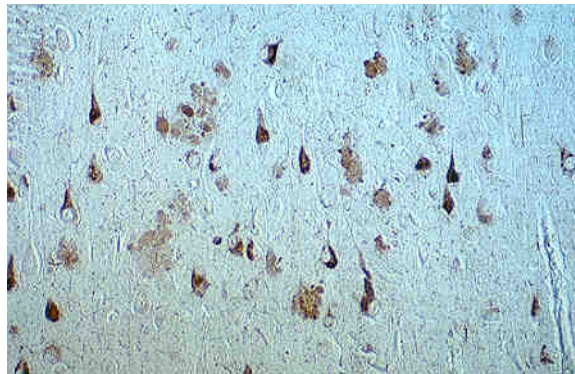
[www.invitrogen.com](http://www.invitrogen.com)

Invitrogen Corporation • 542 Flynn Rd • Camarillo • CA 93012 • Tel: 800.955.6288 • E-mail: [techsupport@invitrogen.com](mailto:techsupport@invitrogen.com)

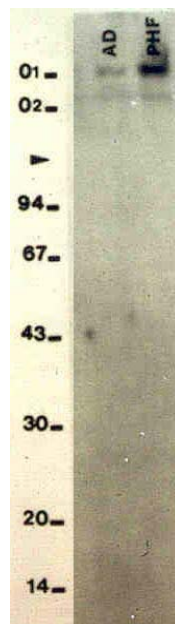
PI AHB0161

(Rev 10/08) DCC-08-1089

**Important Licensing Information** - These products may be covered by one or more Limited Use Label Licenses (see the Invitrogen Catalog or our website, [www.invitrogen.com](http://www.invitrogen.com)). By use of these products you accept the terms and conditions of all applicable Limited Use Label Licenses. Unless otherwise indicated, these products are for research use only and are not intended for human or animal diagnostic, therapeutic or commercial use.



Alzheimer's disease brain showing immunohistochemistry staining of neurofibrillary tangles and dystrophic neurites of senile plaques at 1:200 dilution in formalin-fixed, paraffin-embedded section of hippocampus.



Western blot analysis of Alzheimer's disease brain and a purified preparation of disaggregated paired helical filaments (PHF). The majority of insoluble PHF are excluded from the origin of the stacking gel (O1) with the rest being excluded from the origin of the separating gel (O2).

**This product is for research use only. Not for use in diagnostic procedures.**

[www.invitrogen.com](http://www.invitrogen.com)

Invitrogen Corporation • 542 Flynn Rd • Camarillo • CA 93012 • Tel: 800.955.6288 • E-mail: [techsupport@invitrogen.com](mailto:techsupport@invitrogen.com)

PI AHB0161

(Rev 10/08) DCC-08-1089

**Important Licensing Information** - These products may be covered by one or more Limited Use Label Licenses (see the Invitrogen Catalog or our website, [www.invitrogen.com](http://www.invitrogen.com)). By use of these products you accept the terms and conditions of all applicable Limited Use Label Licenses. Unless otherwise indicated, these products are for research use only and are not intended for human or animal diagnostic, therapeutic or commercial use.