

mCherry Rat Monoclonal Antibody Fluorescent Conjugates

Store at 2°C to 8°C

Pub. No. MAN0010434 Rev. A.0

Catalog No.	Form	Amount	Excitation	Peak Emission
M11238	Pacific Blue™	50 µg	405 nm	455 nm
M11239	Alexa Fluor® 488	50 µg	488 nm	519 nm
M11240	Alexa Fluor® 594	50 µg	590 nm	617 nm
M11241	Alexa Fluor® 647	50 µg	650 nm	668 nm

Product description

The mCherry Rat Monoclonal Antibody can be used to detect native and denatured forms of mCherry, or mCherry fusions in flow cytometry applications.

mCherry is a fluorescent protein derived from *Discosoma sp.* mushroom corals. Because of its improved brightness, superior photostability, and extremely rapid maturation rate, mCherry is rapidly becoming the preferred monomeric red fluorescent protein for monitoring physiological processes and detecting transgenic expression.

Product specifications

Clonality:	Monoclonal
Host/Class:	Rat IgG
Reactivity:	mCherry (native or denatured)
Immunogen:	Full length mCherry fluorescent protein
Apparent MW:	~150 kDa
Clone/PAD:	16D7
Isotype:	IgG2a
Lot:	See product label

Storage and handling

Store reagents at 2°C to 8°C. If the reagent is being diluted, it is recommended that only the quantity to be used within one week be diluted. Cells should be analyzed within 18 hours of staining for best results.

Avoid light exposure with fluorochrome-conjugated antibodies. Use dim light during handling, incubation with cells, and prior to analysis.

Stability

When stored as instructed, expires 6 months from date of receipt unless otherwise indicated on the Certificate of Analysis.

Product applications

The antibody has been used in flow cytometry analysis. In addition, the Alexa Fluor® 594 conjugate has been used in imaging applications. Other applications may work but have not been tested.

Because conditions may vary, it is recommended that each investigator determine the optimal amount of antibody to be used for each application.

Storage buffer

Phosphate buffered saline (PBS) with BSA and 0.03% sodium azide.



CAUTION! Sodium azide is extremely toxic and may react with lead and copper plumbing to form highly explosive metal azides. Properly dispose of solutions containing sodium azide. Read the Safety Data Sheet (SDS) and follow the handling instructions. Wear appropriate protective eyewear, clothing, and gloves. SDSs are available at www.lifetechnologies.com/support.

Product documentation

To obtain a Certificate of Analysis or Safety Data Sheets (SDSs), visit www.lifetechnologies.com/support.

Important licensing information

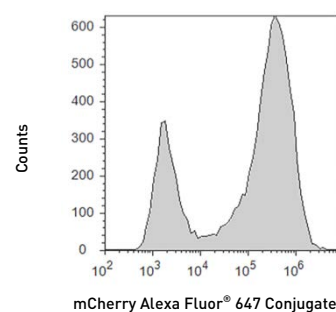
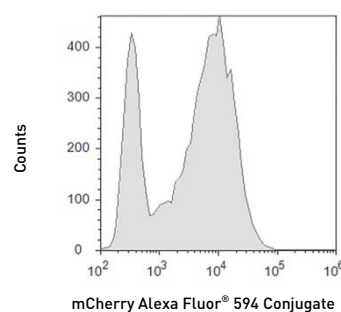
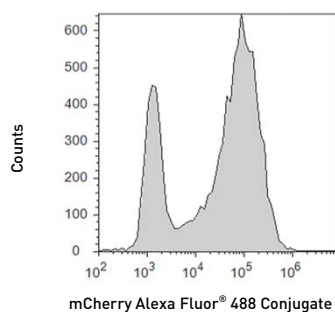
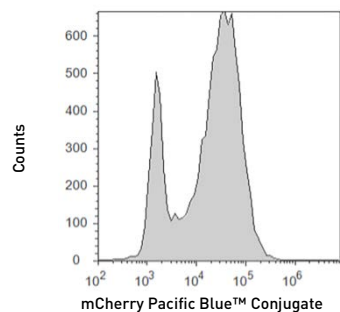
These products may be covered by one or more Limited Use Label Licenses. By use of these products, you accept the terms and conditions of all applicable Limited Use Label Licenses.

Limited product warranty

Life Technologies Corporation and/or its affiliate(s) warrant their products as set forth in the Life Technologies' General Terms and Conditions of Sale found on Life Technologies' website at www.lifetechnologies.com/termsandconditions. If you have any questions, please contact Life Technologies at www.lifetechnologies.com/support.

Related products

Product Name	Quantity	Cat. No.
AbC™ Anti-Mouse Bead Kit	1 kit	A10344
AbC™ Anti-Rat/Hamster Bead Kit	1 kit	A10389
FIX & PERM® Reagents (200 tests)	1 kit	GAS004
LIVE/DEAD® Fixable Dead Cell Stain Kits		
Blue (UV excitation)	1 kit (200 assays)	L23105
Violet (405 nm excitation)		L34955
Aqua (405 nm excitation)		L34957
Yellow (405 nm excitation)		L34959
Green (488 nm excitation)		L23101
Red (488 nm excitation)		L23102
Far Red (633/635 nm excitation)		L10120
Near-IR (633/635 nm excitation)		L10119



U-2 OS cells expressing mCherry protein were fixed, permeabilized, and stained with mCherry Rat Monoclonal Antibody Fluorescent Conjugates. Ten thousand cells were evaluated using Attune® Acoustic Focusing Cytometer.

Explanation of symbols

Symbol	Description	Symbol	Description	Symbol	Description
	Manufacturer		Catalog number		Batch code
	Use by		Temperature limitation		
	Consult instructions for use		Caution, consult accompanying documents		

DISCLAIMER: LIFE TECHNOLOGIES AND/OR ITS AFFILIATE(S) DISCLAIM ALL WARRANTIES WITH RESPECT TO THIS DOCUMENT, EXPRESSED OR IMPLIED, INCLUDING BUT NOT LIMITED TO THOSE OF MERCHANTABILITY, FITNESS FOR A PARTICULAR PURPOSE, OR NON-INFRINGEMENT. TO THE EXTENT ALLOWED BY LAW, IN NO EVENT SHALL LIFE TECHNOLOGIES AND/OR ITS AFFILIATE(S) BE LIABLE, WHETHER IN CONTRACT, TORT, WARRANTY, OR UNDER ANY STATUTE OR ON ANY OTHER BASIS FOR SPECIAL, INCIDENTAL, INDIRECT, PUNITIVE, MULTIPLE OR CONSEQUENTIAL DAMAGES IN CONNECTION WITH OR ARISING FROM THIS DOCUMENT, INCLUDING BUT NOT LIMITED TO THE USE THEREOF.

© 2014 Thermo Fisher Scientific Inc. All rights reserved. All trademarks are the property of Thermo Fisher Scientific and its subsidiaries unless otherwise specified.

For support visit www.lifetechnologies.com/support or email techsupport@lifetech.com

www.lifetechnologies.com

12 May 2014

