

## ABfinity™ CRP Recombinant Rabbit Oligoclonal Antibody

Publication Number: MAN0007179

Rev. 1.00

Catalog Number: 710269

Store at 2°C to 8°C (short-term), or -20°C (long-term)

**Clonality:** Oligoclonal  
**Concentration:** 0.5 mg/mL  
**Quantity:** 100 µg  
**Volume:** 200 µL

**Host/Class:** Rabbit IgG  
**Reactivity:** Human CRP  
**Predicted Reactivity:** Human

### Product Description

C reactive protein (CRP) is an acute-phase reactant produced by liver cells upon IL-1, IL-6 or TNFα stimulation. CRP plays an important role in host defense, and serum levels increase by 100–1000 fold in response to infection, injury, or inflammation. It promotes precipitation, agglutination, capsular swelling, complement fixation, phagocytosis, and cytolysis.

### Product Specifications

**Immunogen:** Recombinant protein corresponding to amino acids 119–224 of human CRP  
**Alternate Names:** PTX1  
**Apparent MW:** 25 kDa  
**Gene ID:** 1401  
**Protein Accession No.:** P02741  
**Sequence Identity:** Human  
**Sequence Homology:** Mouse, Rat, Monkey, Rabbit  
**Clone/PAD:** 5HCLC  
**Lot:** See product label

### Product Applications

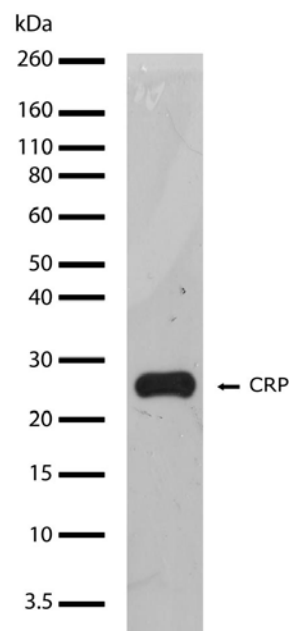
Application	Species	Test Material	Concentration
Western blotting	Mouse	NIH3T3 cells	1–2 µg/mL
Indirect ELISA	Human	Recombinant protein	1.5 × 10 <sup>-4</sup> to 3 µg/mL
Flow cytometry	Human	HeLa cells	5 µg/mL

### Stability

When stored as instructed, expires one year from date of receipt unless otherwise indicated on product label.

### Storage and Handling

Store the antibody at 2°C to 8°C for up to 1 month, -20°C for long storage. Avoid repeated freezing and thawing.



**Figure 1** Western blot analysis of ABfinity™ CRP Recombinant Rabbit Oligoclonal Antibody (Cat. no. 710269).

Western blot analysis was performed on whole cell extracts from NIH3T3 cells. Endogenous levels of CRP was detected at ~25 kDa using ABfinity™ CRP Recombinant Rabbit Oligoclonal Antibody at a concentration of 1 µg/mL. The blot was developed using enhanced chemiluminescence (ECL) method.

### Storage Buffer

Phosphate buffered saline (PBS) with 0.09% sodium azide.

**Caution:** Sodium azide is extremely toxic and may react with lead and copper plumbing to form highly explosive metal azides. Properly dispose of solutions containing sodium azide. Read the Safety Data Sheets (SDSs) and follow the handling instructions. Wear appropriate protective eyewear, clothing, and gloves. SDSs are available at [www.lifetechnologies.com/support](http://www.lifetechnologies.com/support).

**For research use only. Not for use in diagnostic procedures.**

## Product Documentation

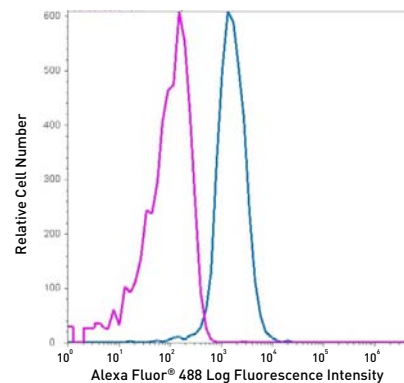
To obtain a Certificate of Analysis or SDS, visit [www.lifetechnologies.com/support](http://www.lifetechnologies.com/support).

## Related Products

Product Name	Quantity	Catalog No.
iBlot® Dry Blotting System	1 unit	IB1001
WesternBreeze® Chromogenic Kit Anti-Rabbit	1 kit	WB7105
WesternBreeze® Chemiluminescent Kit, Anti-Rabbit	1 kit	WB7106

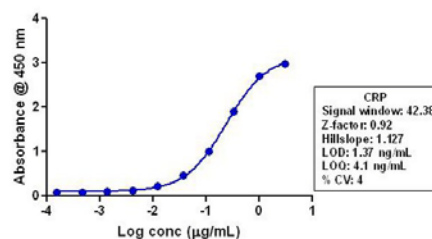
## Limited Product Warranty

Life Technologies Corporation and/or its affiliate(s) warrant their products as set forth in the Life Technologies' General Terms and Conditions of Sale found on Life Technologies' website at [www.lifetechnologies.com/termsandconditions](http://www.lifetechnologies.com/termsandconditions). If you have any questions, please contact Life Technologies at [www.lifetechnologies.com/support](http://www.lifetechnologies.com/support).



**Figure 2** Flow cytometry analysis of HeLa cells labeled with ABfinity™ CRP Recombinant Rabbit Oligoclonal Antibody (Cat. no. 710269).

Fixed and permeabilized HeLa cells that were stained with ABfinity™ CRP Recombinant Rabbit Oligoclonal Antibody, followed by Alexa Fluor® 488 goat anti-Rabbit Ig, are indicated by peak shift (**right peak**). To confirm specificity, the cells were also stained Alexa Fluor® 488 without the CRP antibody (**left peak**).



**Figure 3** Indirect ELISA of ABfinity™ CRP Recombinant Rabbit Oligoclonal Antibody (Cat. no. 710269).

Indirect ELISA was performed using various dilutions of ABfinity™ CRP Recombinant Rabbit Oligoclonal Antibody to detect CRP protein coated onto the plate. A non-linear regression analysis was performed (4 PL), and LOD and LOQ for the antibody was determined.

## Explanation of symbols

Symbol	Description	Symbol	Description	Symbol	Description
	Manufacturer		Catalog number		Batch code
	Use by		Temperature limitation		
	Consult instructions for use		Caution, consult accompanying documents		

## Limited Use Label License No. 327: Recombinant Antibody Technology

Notice to Purchaser: The purchase of this product conveys to the buyer the non-transferable right to use the purchased amount of the product and components of the product in research and manufacturing conducted by the buyer (whether the buyer is an academic or for-profit entity). The buyer cannot sell or otherwise transfer (a) this product, (b) its components or (c) materials made using this product or its components to a third party or otherwise use this product or its components or materials made using this product or its components for Commercial Purposes. The buyer may transfer information or materials made through the use of this product to a scientific collaborator, provided that such transfer is not for any Commercial Purpose, and that such collaborator agrees in writing (a) not to transfer such materials to any third party, and (b) to use such transferred materials and/or information solely for research and not for Commercial Purposes. Commercial Purposes means any activity by a party for consideration and may include, but is not limited to: (1) use of the product or its components for contract manufacturing services; (2) use of the product or its components to provide a service, information, or data; (3) use of the product itself or its components as a therapeutic, diagnostic or prophylactic; or (4) resale of the product or its components, whether or not such product or its components are resold for use in research or manufacturing. If the purchaser is not willing to accept the limitations of this limited use statement, Life Technologies is willing to accept return of the product for a full refund. For information on obtaining additional rights, please contact [outlicensing@lifetech.com](mailto:outlicensing@lifetech.com).

DISCLAIMER: LIFE TECHNOLOGIES AND/OR ITS AFFILIATE(S) DISCLAIM ALL WARRANTIES WITH RESPECT TO THIS DOCUMENT, EXPRESSED OR IMPLIED, INCLUDING BUT NOT LIMITED TO THOSE OF MERCHANTABILITY, FITNESS FOR A PARTICULAR PURPOSE, OR NON-INFRINGEMENT. TO THE EXTENT ALLOWED BY LAW, IN NO EVENT SHALL LIFE TECHNOLOGIES AND/OR ITS AFFILIATE(S) BE LIABLE, WHETHER IN CONTRACT, TORT, WARRANTY, OR UNDER ANY STATUTE OR ON ANY OTHER BASIS FOR SPECIAL, INCIDENTAL, INDIRECT, PUNITIVE, MULTIPLE OR CONSEQUENTIAL DAMAGES IN CONNECTION WITH OR ARISING FROM THIS DOCUMENT, INCLUDING BUT NOT LIMITED TO THE USE THEREOF.

©2012 Life Technologies Corporation. All rights reserved. The trademarks mentioned herein are the property of Life Technologies Corporation or their respective owners.

For support visit [www.lifetechnologies.com/support](http://www.lifetechnologies.com/support) or email [techsupport@lifetech.com](mailto:techsupport@lifetech.com)

[www.lifetechnologies.com](http://www.lifetechnologies.com)

15 September 2012

