

Musashi-1 ABfinity™ Recombinant Rabbit Oligoclonal Antibody – Purified

Publication Part no. MAN0006244

Rev. 1.0

Catalog Number: 710237

Store at 2–8°C (short-term), or –20°C (long-term)

Clonality:	Oligoclonal	Host/Class:	Rabbit IgG
Concentration:	0.5 mg/mL	Reactivity:	Human Musashi-1
Quantity:	100 µg	Predicted Reactivity:	Human
Volume:	200 µL		

Product Description

Musashi-1 belongs to the Musashi family of RNA-binding proteins which play a role in cell fate determination, and maintenance of stem-cell state. Musashi family proteins are also involved in post transcriptional gene regulation. The gene encodes a protein with two conserved tandem RNA recognition motifs (RRM-1 and RRM-2) with highly conserved RNP (ribonucleoprotein) motifs. In mammals, Musashi-1 is expressed in fetal kidney, brain, liver and lung, and in adult brain and pancreas. In humans, the gene is located on chromosome 12.

Product Specifications

Immunogen:	Recombinant protein corresponding to amino acids 280–362 of human Musashi-1
Alternate Names:	MSI1
Apparent MW:	~39 kDa
Gene ID:	4440
Protein Accession No.:	O43347
Sequence Identity:	Human
Sequence Homology:	Mouse, Rat, Horse
Clone/PAD:	13HCLC
Lot:	See product label

Product Applications

Application	Species	Test Material	Concentration
Western blotting	Human	MCF-7 cells	1–3 µg/mL
Immunocytochemistry	Human	HeLa cells	1–3 µg/mL
Indirect ELISA	Human	Recombinant protein	1.5x10 ⁻⁴ to 3 µg/mL

Storage and Handling

Store the antibody at 2–8°C for up to 1 month, or –20°C for long storage. Avoid repeated freezing and thawing.

Stability

Expires one year from date of receipt when stored as instructed.

Storage Buffer

Phosphate buffered saline (PBS) with 0.09% sodium azide.

Note: Sodium azide is an extremely toxic and dangerous compound particularly when combined with acids or metals.

Properly dispose of solutions containing sodium azide.

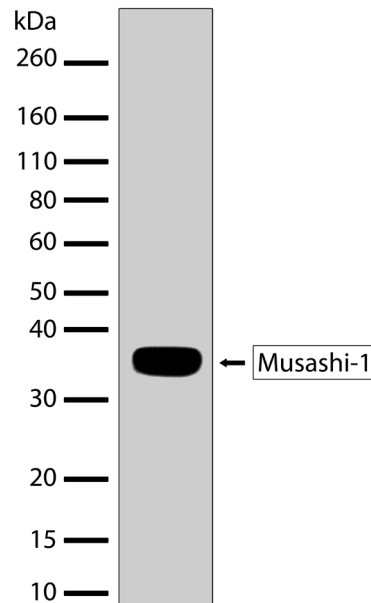


Figure 1 Western blot analysis of Musashi-1 ABfinity™ Recombinant Rabbit Oligoclonal Antibody (Cat. no. 710237). Western blot analysis was performed on MCF-7 whole cell extracts. Endogenous Musashi-1 at ~39 kDa was detected using Musashi-1 ABfinity™ Recombinant Rabbit Oligoclonal Antibody at a concentration of 2 µg/mL. The blot was developed using chemiluminescence (ECL) method.

For research use only. Not for human or animal therapeutic or diagnostic use.

Manufacturing Site • 7335 Executive Way • Frederick • MD 21704 • E-mail: techsupport@lifetech.com

Safety Data Sheets (SDS)

Safety Data Sheets (SDSs) are available at www.lifetechnologies.com/sds.

Certificate of Analysis

The Certificate of Analysis provides detailed quality control and product qualification information for each product. Certificates of Analysis are available on our website. Go to www.lifetechnologies.com/support and search for the Certificate of Analysis by product lot number, which is printed on the box.

Related Products

Product Name	Quantity	Catalog No.
iBlot® Dry Blotting System	1 unit	IB1001
WesternBreeze® Chromogenic Kit Anti-Rabbit	1 kit	WB7105
WesternBreeze® Chemiluminescent Kit, Anti-Rabbit	1 kit	WB7106
Goat anti-mouse (H+L), HRP conj.	1 mg	G21040
Goat anti-rabbit (H+L), HRP conj.	1 mg	G21234
Goat anti-mouse (H+L), AP conj.	1 mg	G21060
Goat anti-rabbit (H+L), AP conj.	1 mg	G21079
Nitrocellulose, 0.2 µm	20/pack	LC2000

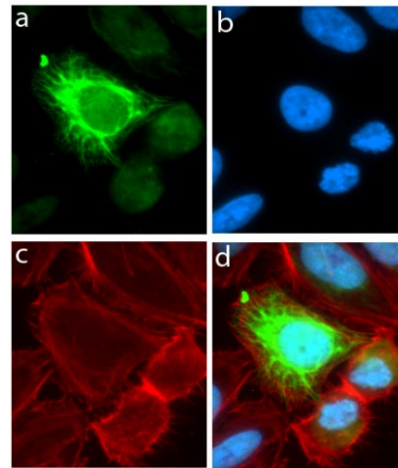


Figure 2 Immunocytochemistry analysis of Musashi-1 ABfinity™ Recombinant Rabbit Oligoclonal Antibody (Cat. no. 710237). Immunocytochemistry analysis of HeLa cells stained with Musashi-1 ABfinity™ Recombinant Rabbit Oligoclonal Antibody, using **a**: Alexa Fluor® 488 goat anti-rabbit as a secondary antibody (green). **b**: DAPI stained HeLa nuclei (blue). **c**: Actin stained with Alexa Fluor® 594 phalloidin (red). **d**: Composite image of cells showing cytoplasmic localization of Musashi-1.

Explanation of symbols

Symbol	Description	Symbol	Description
	Catalogue Number		Batch code
	Research Use Only		<i>In vitro</i> diagnostic medical device
	Use by		Temperature limitation
	Manufacturer		European Community authorised representative
	Without, does not contain		With, contains
	Protect from light		Consult accompanying documents
	Directs the user to consult instructions for use (IFU), accompanying the product.		

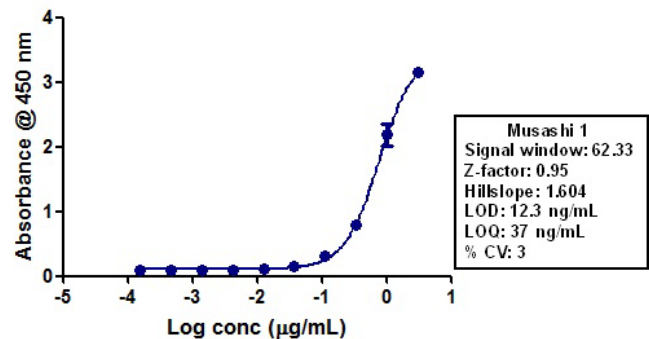


Figure 3 Indirect ELISA of Musashi-1 ABfinity™ Recombinant Rabbit Oligoclonal Antibody (Cat. no. 710237). Indirect ELISA was performed using various dilutions of Musashi-1 ABfinity™ Recombinant Rabbit Oligoclonal Antibody (Cat. no. 710237) to detect recombinant Musashi-1 protein coated onto the plate. A non-linear regression analysis was performed (4 PL) and LOD and LOQ for the antibody was determined.

Limited Use Label License: Research Use Only

The purchase of this product conveys to the purchaser the limited, non-transferable right to use the purchased amount of the product only to perform internal research for the sole benefit of the purchaser. No right to resell this product or any of its components is conveyed expressly, by implication, or by estoppel. This product is for internal research purposes only and is not for use in commercial applications of any kind, including, without limitation, quality control and commercial services such as reporting the results of purchaser's activities for a fee or other form of consideration. For information on obtaining additional rights, please contact outlicensing@lifetech.com or Out Licensing, Life Technologies, 5791 Van Allen Way, Carlsbad, California 92008.

©2012 Life Technologies Corporation. All rights reserved. The trademarks mentioned herein are the property of Life Technologies Corporation or their respective owners.

For support visit www.lifetechnologies.com/support or email techsupport@lifetech.com

www.lifetechnologies.com

Revision Date: 15 January 2012

life
technologies™