

E-Cadherin Rabbit Recombinant Oligoclonal Antibody – Purified

Publication Part no. MAN0005607

Rev. 1.0

Catalog Number: 710161

Store at 2 to 8°C (short-term), or -20°C (long-term)

Clonality: Oligoclonal
Concentration: 0.5 mg/mL
Quantity: 100 µg
Volume: 200 µL

Host/Class: Rabbit IgG
Reactivity: Human E-cadherin (epithelial)
Predicted Reactivity: Human

Product Description

E-cadherin (epithelial cadherin), belongs to the cadherin (calcium dependent adhesion protein) superfamily, which is involved in calcium dependent cell-cell adhesion. E-cadherin is expressed primarily in epithelial tissues. It plays a central role in the growth and development of cells by controlling tissue architecture, and maintenance of tissue integrity. In humans, E-cadherin is encoded by the CDH1 gene present on chromosome 16.

Product Specifications

Immunogen: Peptide corresponding to amino acids 668–677 of human E-cadherin (epithelial)
Alternate Names: CDH1, CDHE, UVO, Uvomorulin
Apparent MW: ~97 kDa
Gene ID: 999
Protein Accession No.: P12830
Sequence Identity: Human
Clone/PAD: 5HCLC
Lot: See product label

Product Applications

Application	Species	Test Material	Concentration
Western blotting	Human	MCF7 cells	1–3 µg/mL
Immunocytochemistry	Human	HEK293 cells	1–3 µg/mL
Indirect ELISA	Human	Peptide	1.5 × 10 ⁻⁴ to 3 µg/mL

Storage and Handling

Store the antibody at 2 to 8°C for up to 1 month, or -20°C for long storage. Avoid repeated freezing and thawing.

Stability

Expires one year from date of receipt when stored as instructed.

Storage Buffer

Phosphate buffered saline (PBS) with 0.09% sodium azide.

Note: Sodium azide is an extremely toxic and dangerous compound particularly when combined with acids or metals. Properly dispose of solutions containing sodium azide.

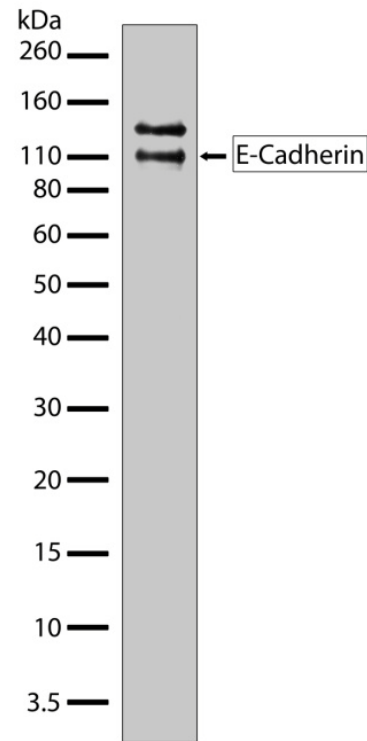


Figure 1 Western blot analysis of E-Cadherin Rabbit Recombinant Oligoclonal Antibody (Cat. no. 710161). Western blot analysis was performed on whole cell extracts of MCF7. Endogenous E-cadherin at ~115 kDa was detected using E-Cadherin Rabbit Recombinant Oligoclonal Antibody at a concentration of 1 µg/mL (a higher molecular weight band was also detected, and may be a phosphorylated and/or glycosylated form of the protein). The blot was developed using chemiluminescence (ECL) method.

For research use only. Not for human or animal therapeutic or diagnostic use.

Manufacturing Site • 7335 Executive Way • Frederick • MD 21704 • E-mail: techsupport@invitrogen.com

Safety Data Sheets (SDS)

Safety Data Sheets (SDSs) are available at www.invitrogen.com/sds.

Certificate of Analysis

The Certificate of Analysis provides detailed quality control and product qualification information for each product. Certificates of Analysis are available on our website. Go to www.invitrogen.com/support and search for the Certificate of Analysis by product lot number, which is printed on the box.

Related Products

Product Name	Quantity	Catalog No.
iBlot® Dry Blotting System	1 unit	IB1001
WesternBreeze™ Chromogenic Kit Anti-Rabbit	1 kit	WB7105
WesternBreeze™ Chemiluminescent Kit, Anti-Rabbit	1 kit	WB7106
Goat anti-mouse (H+L), HRP conj.	1 mg	G21040
Goat anti-rabbit (H+L), HRP conj.	1 mg	G21234
Goat anti-mouse (H+L), AP conj.	1 mg	G21060
Goat anti-rabbit (H+L), AP conj.	1 mg	G21079
Nitrocellulose, 0.2 µm	20/pack	LC2000

Explanation of symbols

Symbol	Description	Symbol	Description
	Catalogue Number		Batch code
	Research Use Only		In vitro diagnostic medical device
	Use by		Temperature limitation
	Manufacturer		European Community authorised representative
	Without, does not contain		With, contains
	Protect from light		Consult accompanying documents
	Directs the user to consult instructions for use (IFU), accompanying the product.		

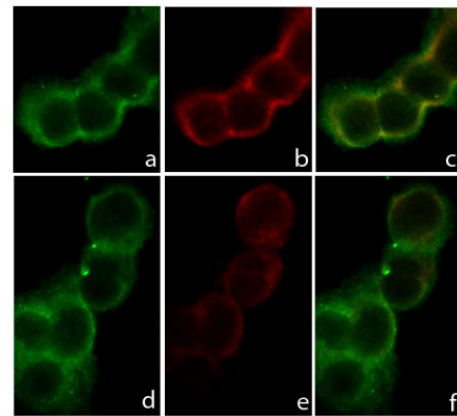


Figure 2 Immunocytochemistry analysis of E-Cadherin Rabbit Recombinant Oligoclonal Antibody (Cat. no. 710161). Immunocytochemistry analysis of HEK293 cells stained with E-Cadherin Rabbit Recombinant Oligoclonal Antibody, using **a, d**: Alexa Fluor® 488 goat anti-rabbit as a secondary antibody (green). **b, e**: Alexa Fluor® 594 phalloidin was used to stain actin (red). **c, f**: Composite image of cells showing localization of E-cadherin at cell membrane and junction.

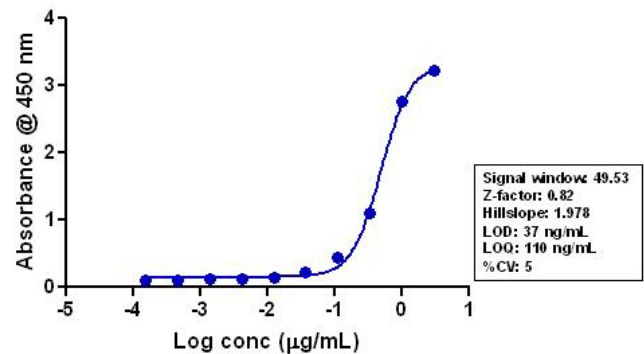


Figure 3 Indirect ELISA of E-Cadherin Rabbit Recombinant Oligoclonal Antibody (Cat. no. 710161). Indirect ELISA was performed using various dilutions of E-Cadherin Rabbit Recombinant Oligoclonal Antibody (Cat. no. 710161) to detect E-cadherin peptide coated onto the plate. A non-linear regression analysis was performed (4 PL) and LOD and LOQ for the antibody was determined.

Limited Use Label License: Research Use Only

The purchase of this product conveys to the purchaser the limited, non-transferable right to use the purchased amount of the product only to perform internal research for the sole benefit of the purchaser. No right to resell this product or any of its components is conveyed expressly, by implication, or by estoppel. This product is for internal research purposes only and is not for use in commercial applications of any kind, including, without limitation, quality control and commercial services such as reporting the results of purchaser's activities for a fee or other form of consideration. For information on obtaining additional rights, please contact outlicensing@lifetech.com or Out Licensing, Life Technologies, 5791 Van Allen Way, Carlsbad, California 92008.

©2011 Life Technologies Corporation. All rights reserved. The trademarks mentioned herein are the property of Life Technologies Corporation or their respective owners.

For support visit www.invitrogen.com/support or email techsupport@invitrogen.com

www.lifetechnologies.com

Revision Date: 15 November 2011

life
technologies™