

STAT6 Rabbit Recombinant Oligoclonal Antibody – Purified

Publication Part no. MAN0005073

Rev. Date: 15 September 2011

Catalog Number: 710140

Store at 2–8°C

Clonality: Oligoclonal
Concentration: 0.5 mg/mL
Quantity: 100 µg
Volume: 200 µL

Host/Class: Rabbit IgG
Reactivity: Human STAT6
Predicted Reactivity: Human

Product Description

STAT6 (signal transducers and activators of transcription 6), belongs to the family of STAT (signal transducers and activators of transcription) proteins which are phosphorylated by receptor associated kinases, translocate to the nucleus, and act as transcription factors in response to cytokines and growth factors. Two naturally occurring isoforms of STAT6 are STAT6a, and STAT6c. STAT6 plays an crucial role in IL-4 mediated biological responses. Activated STAT6 translocates to the nucleus and binds to a STAT6-responsive element on the human IL-4 promoter. STAT6 has also been demonstrated to be important for functions mediated by IL-13, which is related to IL-4. IL4 and IL13 have been shown to induce the production of IgE, which is a major mediator in an allergic response.

Product Specifications

Immunogen: Peptide corresponding to amino acids 630–638 of human STAT6
Alternate Names: IL-4-STAT
Apparent MW: ~110 kDa
Gene ID: 6778
Protein Accession No.: Q5FBW6
Sequence Identity: Human
Clone/PAD: 21HCLC
Lot: See product label

Product Applications

| Application | Species | Test Material | Concentration |
|------------------|---------|---------------|-----------------------------------|
| Western blotting | Human | HeLa cells | 1–3 µg/mL |
| Indirect ELISA | Human | Peptide | 1.5 × 10 ⁻⁴ to 3 µg/mL |

Storage and Handling

Store the antibody at 2–8°C for up to 1 month, or –20°C for long storage. Avoid repeated freezing and thawing.

Stability

Expires one year from date of receipt when stored as instructed.

Storage Buffer

Phosphate buffered saline (PBS) with 0.09% sodium azide.

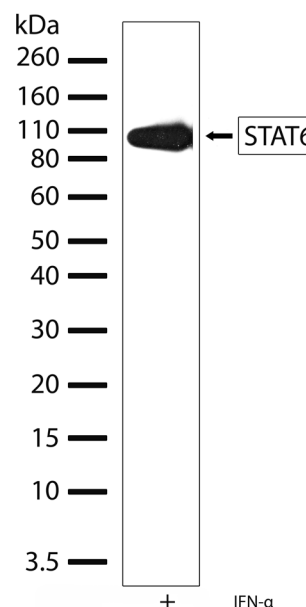


Figure 1 Western blot analysis of STAT6 Rabbit Recombinant Oligoclonal Antibody (Cat. no. 710140). Western blot analysis was performed on whole cell extracts of serum starved HeLa cells treated with IFN1α (150 ng/mL for 15 minutes). Endogenous STAT6 at ~110 kDa was detected using STAT6 Rabbit Recombinant Oligoclonal Antibody at a concentration of 1 µg/mL.

For research use only. Not for human or animal therapeutic or diagnostic use.

Manufacturing Site • 7335 Executive Way • Frederick • MD 21704 • E-mail: techsupport@invitrogen.com

Safety Data Sheets (SDS)

Safety Data Sheets (SDSs) are available at www.invitrogen.com/sds.

Certificate of Analysis

The Certificate of Analysis provides detailed quality control and product qualification information for each product. Certificates of Analysis are available on our website. Go to www.invitrogen.com/support and search for the Certificate of Analysis by product lot number, which is printed on the box.

Related Products

| Product Name | Quantity | Catalog No. |
|--|----------|-------------|
| iBlot® Dry Blotting System | 1 unit | IB1001 |
| WesternBreeze™ Chromogenic Kit Anti-Rabbit | 1 kit | WB7105 |
| WesternBreeze™ Chemiluminescent Kit, Anti-Rabbit | 1 kit | WB7106 |
| Goat anti-mouse (H+L), HRP conj. | 1 mg | G21040 |
| Goat anti-rabbit (H+L), HRP conj. | 1 mg | G21234 |
| Goat anti-mouse (H+L), AP conj. | 1 mg | G21060 |
| Goat anti-rabbit (H+L), AP conj. | 1 mg | G21079 |
| Nitrocellulose, 0.2 µm | 20/pack | LC2000 |

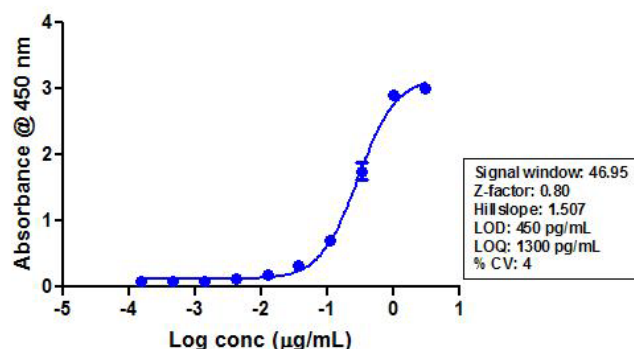


Figure 2 Indirect ELISA of STAT6 Rabbit Recombinant Oligoclonal Antibody (Cat. no. 710140). Indirect ELISA was performed using various dilutions of STAT6 Rabbit Recombinant Oligoclonal Antibody (Cat. no. 710140) to detect STAT6 peptide coated onto the plate. A non-linear regression analysis was performed (4 PL) and LOD and LOQ for the antibody was determined.

Explanation of symbols

| Symbol | Description | Symbol | Description |
|--------|---|--------|--|
| | Catalogue Number | | Batch code |
| | Research Use Only | | In vitro diagnostic medical device |
| | Use by | | Temperature limitation |
| | Manufacturer | | European Community authorised representative |
| | Without, does not contain | | With, contains |
| | Protect from light | | Consult accompanying documents |
| | Directs the user to consult instructions for use (IFU), accompanying the product. | | |

Limited Use Label License: Research Use Only

The purchase of this product conveys to the purchaser the limited, non-transferable right to use the purchased amount of the product only to perform internal research for the sole benefit of the purchaser. No right to resell this product or any of its components is conveyed expressly, by implication, or by estoppel. This product is for internal research purposes only and is not for use in commercial applications of any kind, including, without limitation, quality control and commercial services such as reporting the results of purchaser's activities for a fee or other form of consideration. For information on obtaining additional rights, please contact outlicensing@lifetech.com or Out Licensing, Life Technologies, 5791 Van Allen Way, Carlsbad, California 92008.

©2011 Life Technologies Corporation. All rights reserved. The trademarks mentioned herein are the property of Life Technologies Corporation or their respective owners.

For support visit www.invitrogen.com/support or email techsupport@invitrogen.com

www.lifetechnologies.com

life
technologies™