

MIP1a Rabbit Recombinant Oligoclonal Antibody – Purified

Publication Part no. MAN0004971

Rev. Date: 21 August 2011

Catalog Number: 710127

Store at 2–8°C

Clonality: Oligoclonal
Concentration: 0.5 mg/mL
Quantity: 100 µg
Volume: 200 µL

Host/Class: Rabbit IgG
Reactivity: Human MIP1-alpha
Predicted Reactivity: Human

Product Description

MIP1a belongs to the family of chemotactic cytokines, and is involved in chemotactic and proinflammatory effects, and in homeostasis. MIP1a is produced by lymphocytes, macrophages and dendritic cells. This protein can bind with high affinity to the CCR1 and CCR5 receptors.

Product Specifications

Immunogen: Recombinant protein corresponding to amino acids 27–92 of Human MIP1-alpha
Alternate Names: CCL3 (chemokine ligand 3), SCYA3
Apparent MW: ~10 kDa
Gene ID: 6348
Protein Accession No.: P10147
Sequence Identity: Human
Clone/PAD: 1HCLC
Lot: See product label

Product Applications

Application	Species	Test Material	Concentration
Western blotting	Human	Active recombinant protein	2–5 µg/mL
Indirect ELISA	Human	Recombinant protein	1.5x10 ⁻⁴ to 3 µg/mL

Storage and Handling

Store the antibody at 2–8°C for up to 1 month, –20°C for long storage. Avoid repeated freezing and thawing.

Stability

Expires one year from date of receipt when stored as instructed.

Storage Buffer

Phosphate buffered saline (PBS) with 0.09% sodium azide.

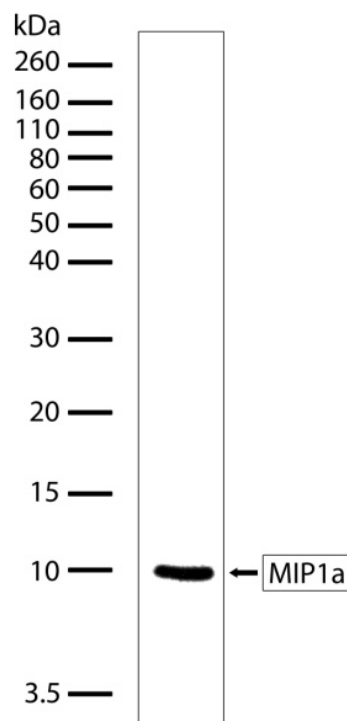


Figure 1 Western blot analysis of MIP1a Rabbit Recombinant Oligoclonal Antibody (Cat. no. 710127). Western blot analysis was performed on Active Recombinant Human MIP1a protein. A band corresponding to human MIP1a at ~10 kDa was detected using MIP1a Rabbit Recombinant Oligoclonal Antibody at a concentration of 2.5 µg/mL.

For research use only. Not for human or animal therapeutic or diagnostic use.

Manufacturing Site • 7335 Executive Way • Frederick • MD 21704 • E-mail: techsupport@invitrogen.com

Safety Data Sheets (SDS)

Safety Data Sheets (SDSs) are available at www.invitrogen.com/sds.

Certificate of Analysis

The Certificate of Analysis provides detailed quality control and product qualification information for each product. Certificates of Analysis are available on our website. Go to www.invitrogen.com/support and search for the Certificate of Analysis by product lot number, which is printed on the box.

Related Products

Product Name	Quantity	Catalog No.
iBlot® Dry Blotting System	1 unit	IB1001
WesternBreeze™ Chromogenic Kit Anti-Rabbit	1 kit	WB7105
WesternBreeze™ Chemiluminescent Kit, Anti-Rabbit	1 kit	WB7106
Goat anti-mouse (H+L), HRP conj.	1 mg	G21040
Goat anti-rabbit (H+L), HRP conj.	1 mg	G21234
Goat anti-mouse (H+L), AP conj.	1 mg	G21060
Goat anti-rabbit (H+L), AP conj.	1 mg	G21079
Nitrocellulose, 0.2 µm	20/pack	LC2000

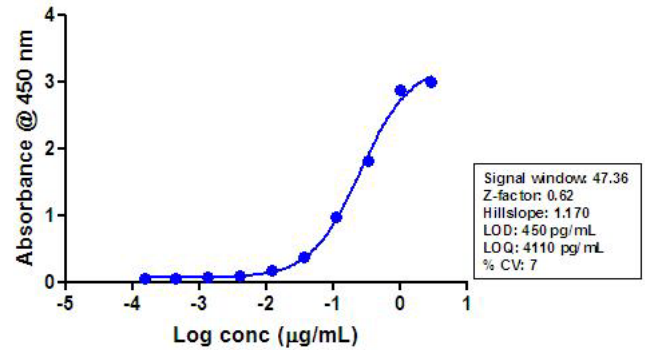


Figure 2 Indirect ELISA of MIP1a Rabbit Recombinant Oligoclonal Antibody (Cat. no. 710127). Indirect ELISA was performed using various dilutions of MIP1a Rabbit Recombinant Oligoclonal Antibody (Cat. no. 710127) to detect recombinant MIP1a protein coated onto the plate. A non-linear regression analysis was performed (4 PL) and LOD and LOQ for the antibody was determined.

Explanation of symbols

Symbol	Description	Symbol	Description
	Catalogue Number		Batch code
	Research Use Only		<i>In vitro</i> diagnostic medical device
	Use by		Temperature limitation
	Manufacturer		European Community authorised representative
	Without, does not contain		With, contains
	Protect from light		Consult accompanying documents
	Directs the user to consult instructions for use (IFU), accompanying the product.		

Limited Use Label License: Research Use Only

The purchase of this product conveys to the purchaser the limited, non-transferable right to use the purchased amount of the product only to perform internal research for the sole benefit of the purchaser. No right to resell this product or any of its components is conveyed expressly, by implication, or by estoppel. This product is for internal research purposes only and is not for use in commercial applications of any kind, including, without limitation, quality control and commercial services such as reporting the results of purchaser's activities for a fee or other form of consideration. For information on obtaining additional rights, please contact outlicensing@lifetech.com or Out Licensing, Life Technologies, 5791 Van Allen Way, Carlsbad, California 92008.

©2011 Life Technologies Corporation. All rights reserved. The trademarks mentioned herein are the property of Life Technologies Corporation or their respective owners.

For support visit www.invitrogen.com/support or email techsupport@invitrogen.com

www.lifetechnologies.com

life
technologies™