

AS160 [pT642] Rabbit Recombinant Oligoclonal Antibody – Purified

MAN0004406

Rev. Date: 21 May 2011

Catalog Number: 710105

Store at 2–8°C

Clonality:	Oligoclonal	Host/Class:	Rabbit IgG
Concentration:	0.5 mg/mL	Reactivity:	Human TBC1 domain family, member 4
Quantity:	100 µg	Predicted Reactivity:	Human
Volume:	200 µL		

Product Description

AS160 (AKT substrate of 160 kDa), also known as TBC1D4 [TBC1 (tre-2/USP6, BUB2, cdc16) domain family member 4], is a 160 kDa protein expressed in many tissues including brain, kidney, and liver. The protein is a Rab GTPase activating protein (GAP) involved in control of energy functions such as glucose and lipid metabolism. In humans, the gene is located on the q arm of chromosome 13.

Product Specifications

Immunogen:	Peptide with the sequence RRRAH[pT]FSHPPS corresponding to amino acids 637–648 of AS160
Alternate Names:	TBC1D4
Apparent MW:	~160 kDa
Gene ID:	9882
Protein Accession No.:	O60343
Sequence Identity:	Human
Sequence Homology:	Mouse
Clone/PAD:	10HCLC
Lot:	See product label

Product Applications

Application	Species	Test Material	Concentration
Western Blotting	Human	HeLa cells (Serum Starved) + IGF1 (150 ng/mL for 15 min)	2–5 µg/mL
ELISA	Human	Phosphopeptide	1.5x10 ⁻⁴ to 3 µg/mL

Storage and Handling

Store the antibody at 2–8°C for up to 1 month. Store at –20°C for long term storage. Avoid repeated freezing and thawing.

Stability

Expires one year from date of receipt when stored as instructed.

Storage Buffer

Phosphate buffered saline (PBS) with 0.09% sodium azide.

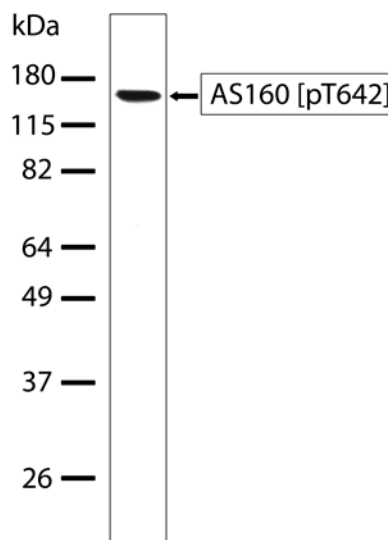


Figure 1 Western Blot analysis of AS160 [pT642] Rabbit Recombinant Oligoclonal Antibody (Cat. no. 710105). Whole cell extract (30 µg per lane) from HeLa cells (Serum Starved) treated with IGF1 (150 ng/mL for 15 min) was run on SDS-PAGE, and transferred onto nitrocellulose. The blot was blocked, and incubated with AS160 [pT642] Rabbit Recombinant Oligoclonal Antibody at 2.5 µg/mL, overnight at 4°C. HRP conjugated Goat Anti-Rabbit secondary antibody was used at a 1:5000 dilution, and developed by chemiluminescence (ECL). A band corresponding to AS160 at ~160 kDa was detected.

For research use only. Not for human or animal therapeutic or diagnostic use.

Manufacturing Site • 7335 Executive Way • Frederick • MD 21704 • E-mail: techsupport@invitrogen.com

Safety Data Sheets (SDS)

Safety Data Sheets (SDSs) are available at www.invitrogen.com/sds.

Certificate of Analysis

The Certificate of Analysis provides detailed quality control and product qualification information for each product. Certificates of Analysis are available on our website. Go to www.invitrogen.com/support and search for the Certificate of Analysis by product lot number, which is printed on the box.

Related Products

Product Name	Quantity	Catalog No.
iBlot® Dry Blotting System	1 unit	IB1001
WesternBreeze® Chromogenic Kit Anti-Rabbit	1 kit	WB7105
WesternBreeze® Chemiluminescent Kit, Anti-Rabbit	1 kit	WB7106
Goat anti-mouse (H+L), HRP conj.	1 mg	G21040
Goat anti-rabbit (H+L), HRP conj.	1 mg	G21234
Goat anti-mouse (H+L), AP conj.	1 mg	G21060
Goat anti-rabbit (H+L), AP conj.	1 mg	G21079
Nitrocellulose, 0.2 µm	20/pack	LC2000

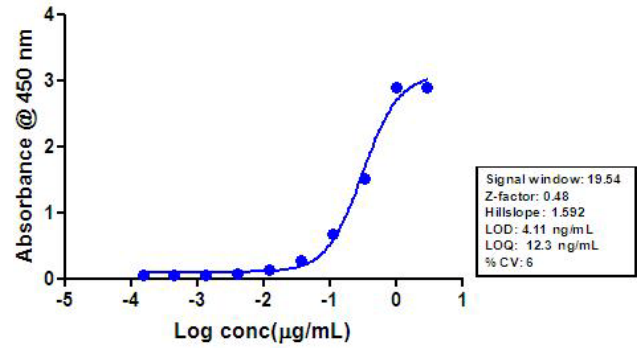


Figure 2 Indirect ELISA of AS160 [pT642] Rabbit Recombinant Oligoclonal Antibody (Cat. no. 710105). Indirect ELISA was performed using AS160 [pT642] Rabbit Recombinant Oligoclonal Antibody to detect the AS160 [T642] phosphopeptide (100 ng/well). HRP conjugated Goat Anti-Rabbit secondary antibody was used at 1:5000 dilution, and developed using TMB (Cat. no. SB01) as substrate.

Explanation of symbols

Symbol	Description	Symbol	Description
	Catalogue Number		Batch code
	Research Use Only		<i>In vitro</i> diagnostic medical device
	Use by		Temperature limitation
	Manufacturer		European Community authorised representative
	Without, does not contain		With, contains
	Protect from light		Consult accompanying documents
	Directs the user to consult instructions for use (IFU), accompanying the product.		

Limited Use Label License: Research Use Only

The purchase of this product conveys to the purchaser the limited, non-transferable right to use the purchased amount of the product only to perform internal research for the sole benefit of the purchaser. No right to resell this product or any of its components is conveyed expressly, by implication, or by estoppel. This product is for internal research purposes only and is not for use in commercial applications of any kind, including, without limitation, quality control and commercial services such as reporting the results of purchaser's activities for a fee or other form of consideration. For information on obtaining additional rights, please contact outlicensing@lifetech.com or Out Licensing, Life Technologies, 5791 Van Allen Way, Carlsbad, California 92008.

©2011 Life Technologies Corporation. All rights reserved. The trademarks mentioned herein are the property of Life Technologies Corporation or their respective owners.

For support visit www.invitrogen.com/support or email techsupport@invitrogen.com

www.lifetechnologies.com

life
technologies™