

LRRK2 [pS935] Rabbit Recombinant Oligoclonal Antibody – Purified

Publication Part no. MAN0004986

Rev. Date: 21 August 2011

Catalog Number: 710097

Store at 2–8°C

Clonality: Oligoclonal
Concentration: 0.5 mg/mL
Quantity: 100 µg
Volume: 200 µL

Host/Class: Rabbit IgG
Reactivity: Human LRRK2
Predicted Reactivity: Human

Product Description

LRRK2 (Leucine-rich repeat kinase 2) belongs to the leucine-rich repeat kinase family commonly known as Dardarin. The LRRK2 gene encodes for a protein with an ankyrin-repeat region, a leucine-rich repeat region, a kinase domain, a RAS domain, a GTPase-domain, a MLK-like domain, and a WD40 domain. Proteins with leucine-rich regions play important roles in activities that require protein-protein interactions, such as transmitting signals or helping to assemble the cell's structural framework. Phosphorylation of LRRK2 at multiple sites including serine 910 and serine 935 regulates LRRK2 mediated cellular activities by affecting binding of dimeric 14-3-3 protein. Phosphorylation at Ser⁹¹⁰, found to be constitutive in various tissues, is caused by protein kinase A. In humans, he gene is present on the q arm of chromosome 12.

Product Specifications

Immunogen: Phosphopeptide corresponding to amino acids 930–940 of Human LRRK2
Alternate Names: RIPK7, PARK8, AURA17, Dardarin
Apparent MW: ~290 kDa
Gene ID: 120892
Protein Accession No.: Q17RV3
Sequence Identity: Human
Sequence Homology: Mouse, Rat, Monkey
Clone/PAD: 3HCLC
Lot: See product label

Product Applications

Application	Species	Test Material	Concentration
Western blotting	Human	U-2 OS cells expressing LRRK2-GFP	2–5 µg/mL
Indirect ELISA	Human	Phosphopeptide	1.5x10 ⁻⁴ to 3 µg/mL

Storage and Handling

Store the antibody at 2–8°C for up to 1 month, or –20°C for long storage. Avoid repeated freezing and thawing.

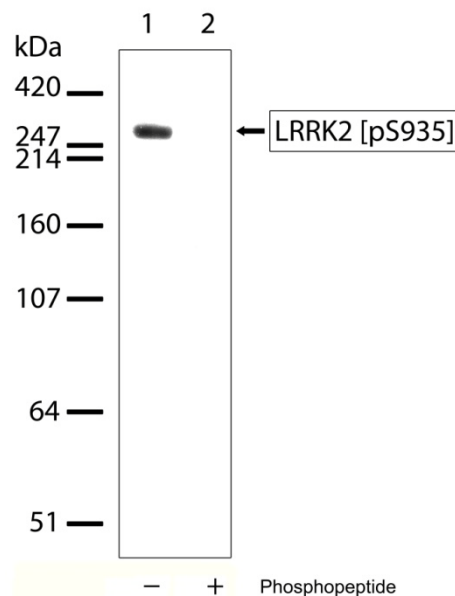


Figure 1 Western blot analysis of LRRK2 [pS935] Rabbit Recombinant Oligoclonal Antibody (Cat. no. 710097). Western blot analysis was performed on whole cell extracts of U-2 OS expressing full length LRRK2-GFP (lanes 1 and 2). A band corresponding to phosphorylated LRRK2 at ~290 kDa was detected using LRRK2 [pS935] Rabbit Recombinant Oligoclonal Antibody at a concentration of 2.5 µg/mL (lane 1). To confirm specificity, competition was performed with the phosphopeptide (lane 2).

For research use only. Not for human or animal therapeutic or diagnostic use.

Manufacturing Site • 7335 Executive Way • Frederick • MD 21704 • E-mail: techsupport@invitrogen.com

Stability

Expires one year from date of receipt when stored as instructed.

Storage Buffer

Phosphate buffered saline (PBS) with 0.09% sodium azide.

Safety Data Sheets (SDS)

Safety Data Sheets (SDSs) are available at www.invitrogen.com/sds.

Certificate of Analysis

The Certificate of Analysis provides detailed quality control and product qualification information for each product. Certificates of Analysis are available on our website. Go to www.invitrogen.com/support and search for the Certificate of Analysis by product lot number, which is printed on the box.

Related Products

Product Name	Quantity	Catalog No.
iBlot [®] Dry Blotting System	1 unit	IB1001
WesternBreeze [™] Chromogenic Kit Anti-Rabbit	1 kit	WB7105
WesternBreeze [™] Chemiluminescent Kit, Anti-Rabbit	1 kit	WB7106
Goat anti-mouse (H+L), HRP conj.	1 mg	G21040
Goat anti-rabbit (H+L), HRP conj.	1 mg	G21234
Goat anti-mouse (H+L), AP conj.	1 mg	G21060
Goat anti-rabbit (H+L), AP conj.	1 mg	G21079
Nitrocellulose, 0.2 µm	20/pack	LC2000

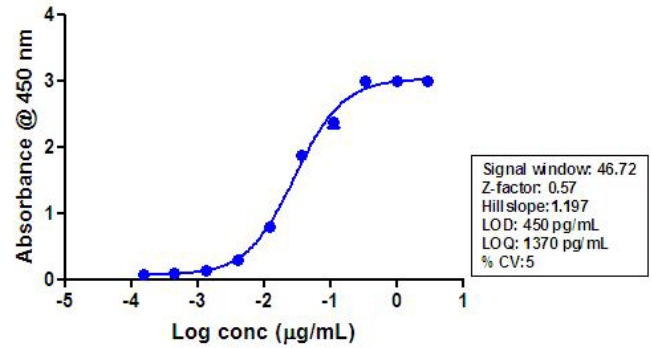


Figure 2 Indirect ELISA of LRRK2 [pS935] Rabbit Recombinant Oligoclonal Antibody (Cat. no. 710097). Indirect ELISA was performed using various dilutions of LRRK2 [pS935] Rabbit Recombinant Oligoclonal Antibody (Cat. no. 710097) to detect phospho LRRK2 [pS935] peptide coated onto the plate. A non-linear regression analysis was performed (4 PL) and LOD and LOQ for the antibody was determined.

Explanation of symbols

Symbol	Description	Symbol	Description
[REF]	Catalogue Number	[LOT]	Batch code
[RUO]	Research Use Only	[IVD]	In vitro diagnostic medical device
	Use by		Temperature limitation
	Manufacturer	[EC/REP]	European Community authorised representative
[-]	Without, does not contain	[+]	With, contains
	Protect from light		Consult accompanying documents
	Directs the user to consult instructions for use (IFU), accompanying the product.		

Limited Use Label License: Research Use Only

The purchase of this product conveys to the purchaser the limited, non-transferable right to use the purchased amount of the product only to perform internal research for the sole benefit of the purchaser. No right to resell this product or any of its components is conveyed expressly, by implication, or by estoppel. This product is for internal research purposes only and is not for use in commercial applications of any kind, including, without limitation, quality control and commercial services such as reporting the results of purchaser's activities for a fee or other form of consideration. For information on obtaining additional rights, please contact outlicensing@lifetech.com or Out Licensing, Life Technologies, 5791 Van Allen Way, Carlsbad, California 92008.

©2011 Life Technologies Corporation. All rights reserved. The trademarks mentioned herein are the property of Life Technologies Corporation or their respective owners.

For support visit www.invitrogen.com/support or email techsupport@invitrogen.com

www.lifetechnologies.com

life technologies[™]