

BMP2 Rabbit Recombinant Oligoclonal Antibody – Purified

Catalog no. 710022

(See product label for lot information)



Clone/PAD: 18HCLC
Isotype: IgG
Gene ID: 650
Protein Acc. no.: P12643
Qty: 100 µg
Volume: 200 µL
Concentration: 0.5 mg/mL

Formulation

PBS + 0.09% sodium azide

Application

For use in Western Blotting

Reactivity

This antibody is specific for human BMP2

Immunogen

Protein corresponding to amino acids
283–396 of human BMP2

Sequence Identity

Human

Sequence Homology

Mouse

Expected Reactivity

Based on sequence identity and similarity,
reactivity to Human and Mouse is expected.

Storage

2–8°C for up to 1 month, –20°C for long
term storage. Avoid repeated freezing and
thawing.

Expiration Date

Expires one year from date of receipt when
stored as instructed.

Background

The protein BMP2 also known as Bone morphogenetic protein-2, belong to the transforming growth factor beta superfamily. The protein plays an important role in bone and cartilage formation (1). BMP2 signaling also is important for epithelo-mesenchymal interactions, apoptosis and dorso-ventral axis formation (2).

References

- 1) Di Chen, Ming Zhao, Gregory R Mundy. 2004. Bone Morphogenetic Proteins. Growth factors 233-241.
- 2) David T. Fritz, Shan Jiang, Junwang Xu, and Melissa B. Rogers. 2006. A Polymorphism in a Conserved Posttranscriptional Regulatory Motif Alters Bone Morphogenetic Protein 2(BMP2) RNA : Protein Interactions. Molecular Endocrinology. 1574-1586.
- 3) J.M. Granjeiro, R.C. Oliveira, J.C. Bustos-Valenzuela, M.C. Sogayar and R. Taga.2005. Bone morphogenetic proteins:from structure to clinical use. Brazilian Journal of Medical and Biological Research. 1463-1473.

Applications:

	Species	Test Material	Concentration
Western Blotting	Human	HeLa	4–5 µg/mL

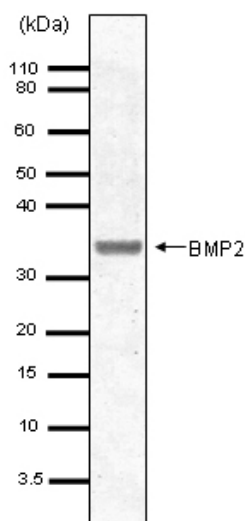
For Research Use Only. Not for human or animal therapeutic or diagnostic use

www.invitrogen.com

Invitrogen Corporation • 7335 Executive Way • Frederick • MD 21704 • Tel: 800.955.6288 • E-mail: techsupport@invitrogen.com

MAN0003635

Effective date: 03Mar2011



Western Blot of BMP2 labeled with BMP2 Rabbit Recombinant Oligoclonal Antibody (Cat. no. 710022). BMP2 Rabbit Recombinant Oligoclonal Antibody (5 µg/mL) was used to detect BMP2 in HeLa Cell Lysate (30 µg/lane). The western blot was performed using the WesternBreeze® kit (Cat. no. WB7105) with NBT/BCIP as the substrate.

Explanation of symbols

Symbol	Description	Symbol	Description
	Catalogue Number		Batch code
	Research Use Only		<i>In vitro</i> diagnostic medical device
	Use by		Temperature limitation
	Manufacturer		European Community authorised representative
	Without, does not contain		With, contains
	Protect from light		Consult accompanying documents
	Directs the user to consult instructions for use (IFU), accompanying the product.		

Limited Use Label License: Research Use Only

The purchase of this product conveys to the purchaser the limited, non-transferable right to use the purchased amount of the product only to perform internal research for the sole benefit of the purchaser. No right to resell this product or any of its components is conveyed expressly, by implication, or by estoppel. This product is for internal research purposes only and is not for use in commercial applications of any kind, including, without limitation, quality control and commercial services such as reporting the results of purchaser's activities for a fee or other form of consideration. For information on obtaining additional rights, please contact outlicensing@lifetech.com or Out Licensing, Life Technologies, 5791 Van Allen Way, Carlsbad, California 92008.

©2011 Life Technologies Corporation. All rights reserved. The trademarks mentioned herein are the property of Life Technologies Corporation or their respective owners.

For Research Use Only. Not for human or animal therapeutic or diagnostic use

www.invitrogen.com

Invitrogen Corporation • 7335 Executive Way • Frederick • MD 21704 • Tel: 800.955.6288 • E-mail: techsupport@invitrogen.com

MAN0003635

Effective date: 03Mar2011