

ABfinity™ EGF Recombinant Monoclonal Antibody

Store at 2°C to 8°C (short-term), or -20°C (long-term)

Catalog Number: 701538

Pub. No. MAN0010204 Rev. 1.00

Clonality: Monoclonal	Quantity: 100 µg	Volume: 200 µL	Concentration: 0.5 mg/mL
Host/Class: Rabbit IgG	Reactivity: Human EGF	Reactive Species: Human	

Product description

Epidermal growth factor (EGF) is a growth factor belonging to the tyrosine kinase superfamily. EGF is widely expressed in kidney, cerebrum, prostate, and salivary glands. It is a potent mitogenic factor that binds to its receptor (EGFR) to activate at least four major downstream signaling cascades. The phosphorylated receptor recruits adapter proteins like GRB2 which in turn activates signal transduction pathways connected to cell proliferation and differentiation.

Product specifications

Predicted Reactivity:	Monkey, Swine, Bovine, Rabbit, Horse
Alternate Names:	URG, HOMG4
Gene ID:	1950
Protein Accession No.:	P00533
Sequence Identity:	Human
Clone/PAD:	3H11L6
Isotype:	IgG
Lot:	See product label

Product applications

The antibody has been used in immunocytochemistry and ELISA applications. Other applications may work but have not been tested.

Because conditions may vary, it is recommended that each investigator determine the optimal amount of antibody to be used for each application.

Storage and handling

Store the antibody at 2°C to 8°C for up to 1 month, or -20°C for long-term storage. Avoid repeated freezing and thawing.

Stability

When stored as instructed, expires one year from date of receipt unless otherwise indicated on product label.

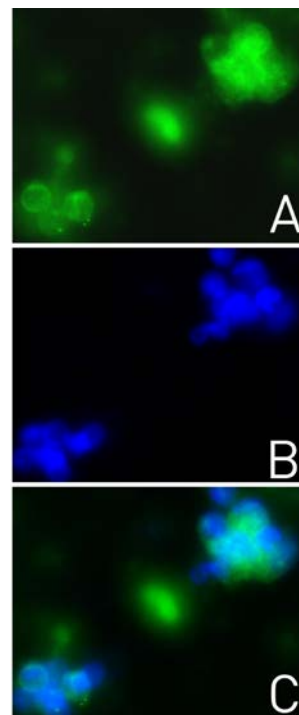


Figure 1 Immunocytochemistry analysis of ABfinity™ EGF Recombinant Rabbit Monoclonal Antibody (Cat. no. 701538).

Immunocytochemistry analysis of Human PBMCs stained with ABfinity™ EGF Recombinant Rabbit Monoclonal Antibody using **a:** Alexa Fluor® 488 goat anti-rabbit as a secondary antibody (green). **b:** DAPI stained PBMC nuclei (blue). **c:** Composite image of cells showing nuclear and epidermal localization of EGF.

Storage buffer

Phosphate buffered saline (PBS) with 0.09% sodium azide.



CAUTION! Sodium azide is extremely toxic and may react with lead and copper plumbing to form highly explosive metal azides. Properly dispose of solutions containing sodium azide. Read the Safety Data Sheet (SDS) and follow the handling instructions. Wear appropriate protective eyewear, clothing, and gloves. SDSs are available at www.lifetechnologies.com/support.

Product documentation

To obtain a Certificate of Analysis or Safety Data Sheets (SDSs), visit www.lifetechnologies.com/support.

Related products

Product Name	Quantity	Cat. No.
WesternBreeze® Chromogenic Kit Anti-Rabbit	1 kit	WB7105
WesternBreeze® Chemiluminescent Kit Anti-Rabbit	1 mg	WB7106
Goat anti-mouse (H+L), HRP conj.	1 mg	G21040
Goat anti-rabbit (H+L), HRP conj.	1 mg	G21234
Goat anti-mouse (H+L), AP conj.	1 mg	G21060
Goat anti-rabbit (H+L), AP conj.	1 mg	G21079
Streptavidin Agarose	5 mL	SA10004

Important licensing information

This product may be covered by one or more Limited Use Label Licenses. By use of this product, you accept the terms and conditions of all applicable Limited Use Label Licenses.

Limited product warranty

Life Technologies Corporation and/or its affiliate(s) warrant their products as set forth in the Life Technologies' General Terms and Conditions of Sale found on Life Technologies' website at www.lifetechnologies.com/termsandconditions. If you have any questions, please contact Life Technologies at www.lifetechnologies.com/support.

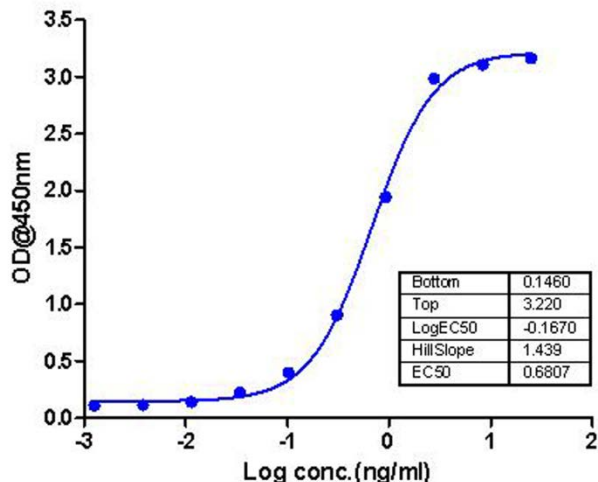


Figure 2 Sandwich ELISA analysis of ABfinity™ EGF Recombinant Rabbit Monoclonal Antibody (Cat. no. 701538). Sandwich ELISA analysis was performed using ABfinity™ EGF Recombinant Rabbit Monoclonal Antibody coated onto the plate at 2 µg/mL. A ten point standard curve was plotted with full length active recombinant EGF protein as a standard with concentrations ranging from 0.3 µg/mL to 12.5 ng/mL. An Anti-EGF antibody conjugated to biotin was used as a detector at a concentration of 2 µg/mL. A non-linear regression analysis (4 PL) was performed and LOD and LOQ for the antibody pair was determined.

Explanation of symbols

Symbol	Description	Symbol	Description	Symbol	Description
	Manufacturer		Catalog number		Batch code
	Use by		Temperature limitation		
	Consult instructions for use		Caution, consult accompanying documents		

DISCLAIMER: LIFE TECHNOLOGIES AND/OR ITS AFFILIATE(S) DISCLAIM ALL WARRANTIES WITH RESPECT TO THIS DOCUMENT, EXPRESSED OR IMPLIED, INCLUDING BUT NOT LIMITED TO THOSE OF MERCHANTABILITY, FITNESS FOR A PARTICULAR PURPOSE, OR NON-INFRINGEMENT. TO THE EXTENT ALLOWED BY LAW, IN NO EVENT SHALL LIFE TECHNOLOGIES AND/OR ITS AFFILIATE(S) BE LIABLE, WHETHER IN CONTRACT, TORT, WARRANTY, OR UNDER ANY STATUTE OR ON ANY OTHER BASIS FOR SPECIAL, INCIDENTAL, INDIRECT, PUNITIVE, MULTIPLE OR CONSEQUENTIAL DAMAGES IN CONNECTION WITH OR ARISING FROM THIS DOCUMENT, INCLUDING BUT NOT LIMITED TO THE USE THEREOF.

© 2014 Thermo Fisher Scientific Inc. All rights reserved. All trademarks are the property of Thermo Fisher Scientific and its subsidiaries unless otherwise specified.

For support visit www.lifetechnologies.com/support or email techsupport@lifetech.com

www.lifetechnologies.com

15 March 2014

life
technologies™