

Connexin 36 ABfinity™ Recombinant Rabbit Monoclonal Antibody – Purified

Publication Part no. MAN0006235

Rev. 1.0

Catalog Number: 701194

Store at 2–8°C (short-term), or –20°C (long-term)

Clonality: Monoclonal
Concentration: 0.5 mg/mL
Quantity: 100 µg
Volume: 200 µL

Host/Class: Rabbit IgG
Reactivity: Human Connexin 36
Predicted Reactivity: Human

Product Description

Connexin 36 (Cx36), belongs to the connexin family of gap junction proteins, and is expressed predominantly in neuronal cells of the mammalian central nervous system. It is highly expressed in adult retina, and is present in neurons of the inferior olive, the olfactory bulb, the CA3/CA4 hippocampal subfields and several brain-stem nuclei.

Product Specifications

Immunogen: Peptide corresponding to amino acids 308–319 of human connexin 36
Alternate Names: Cx36, GJD2, GJA9
Apparent MW: ~36 kDa
Gene ID: 57369
Protein Accession No.: Q9UKL4
Sequence Identity: Human
Sequence Homology: Mouse, Rat, Horse
Clone/PAD: 2H12L14
Lot: See product label

Product Applications

Application	Species	Test Material	Concentration
Western blotting	Rat and Human	Rat brain lysate and HepG2 cells	2–5 µg/mL
Immunocytochemistry	Human	HeLa cells	1–3 µg/mL
Indirect ELISA	Human	Peptide	1.5x10 ⁻⁴ to 3 µg/mL

Storage and Handling

Store the antibody at 2–8°C for up to 1 month, or –20°C for long storage. Avoid repeated freezing and thawing.

Stability

Expires one year from date of receipt when stored as instructed.

Storage Buffer

Phosphate buffered saline (PBS) with 0.09% sodium azide.

Note: Sodium azide is an extremely toxic and dangerous compound particularly when combined with acids or metals. Properly dispose of solutions containing sodium azide.

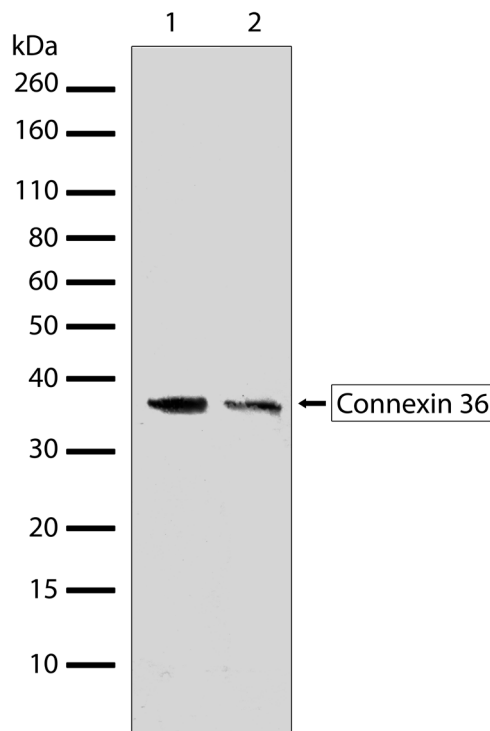


Figure 1 Western blot analysis of Connexin 36 ABfinity™ Recombinant Rabbit Monoclonal Antibody (Cat. no. 701194). Western blot analysis was performed on rat brain lysate (lane 1) and HepG2 whole cell extracts (lane 2). Endogenous connexin 36 at ~36 kDa was detected using Connexin 36 ABfinity™ Recombinant Rabbit Monoclonal Antibody at a concentration of 2 µg/mL. The blot was developed using chemiluminescence (ECL) method.

For research use only. Not for human or animal therapeutic or diagnostic use.

Manufacturing Site • 7335 Executive Way • Frederick • MD 21704 • E-mail: techsupport@lifetech.com

Safety Data Sheets (SDS)

Safety Data Sheets (SDSs) are available at www.lifetechnologies.com/sds.

Certificate of Analysis

The Certificate of Analysis provides detailed quality control and product qualification information for each product. Certificates of Analysis are available on our website. Go to www.lifetechnologies.com/support and search for the Certificate of Analysis by product lot number, which is printed on the box.

Related Products

Product Name	Quantity	Catalog No.
iBlot® Dry Blotting System	1 unit	IB1001
WesternBreeze® Chromogenic Kit Anti-Rabbit	1 kit	WB7105
WesternBreeze® Chemiluminescent Kit, Anti-Rabbit	1 kit	WB7106
Goat anti-mouse (H+L), HRP conj.	1 mg	G21040
Goat anti-rabbit (H+L), HRP conj.	1 mg	G21234
Goat anti-mouse (H+L), AP conj.	1 mg	G21060
Goat anti-rabbit (H+L), AP conj.	1 mg	G21079
Nitrocellulose, 0.2 µm	20/pack	LC2000

Explanation of symbols

Symbol	Description	Symbol	Description
	Catalogue Number		Batch code
	Research Use Only		In vitro diagnostic medical device
	Use by		Temperature limitation
	Manufacturer		European Community authorised representative
	Without, does not contain		With, contains
	Protect from light		Consult accompanying documents
	Directs the user to consult instructions for use (IFU), accompanying the product.		

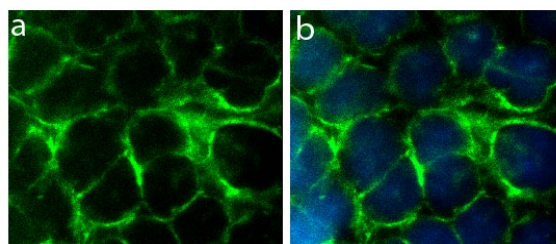


Figure 2 Immunocytochemistry analysis of Connexin 36 ABfinity™ Recombinant Rabbit Monoclonal Antibody (Cat. no. 701194). Immunocytochemistry analysis of HeLa cells stained with Connexin 36 ABfinity™ Recombinant Rabbit Monoclonal Antibody, using **a:** Alexa Fluor® 488 goat anti-rabbit as a secondary antibody (green). **b:** Composite image of cells with nuclei stained with DAPI (blue) showing membrane and junction localization of connexin 36.

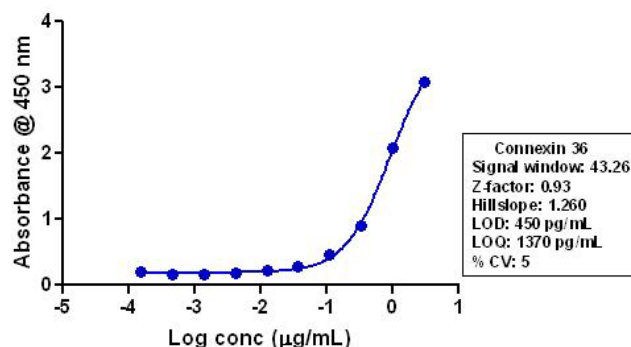


Figure 3 Indirect ELISA of Connexin 36 ABfinity™ Recombinant Rabbit Monoclonal Antibody (Cat. no. 701194). Indirect ELISA was performed using various dilutions of Connexin 36 ABfinity™ Recombinant Rabbit Monoclonal Antibody (Cat. no. 701194) to detect connexin 36 peptide coated onto the plate. A non-linear regression analysis was performed (4 PL) and LOD and LOQ for the antibody was determined.

Limited Use Label License: Research Use Only

The purchase of this product conveys to the purchaser the limited, non-transferable right to use the purchased amount of the product only to perform internal research for the sole benefit of the purchaser. No right to resell this product or any of its components is conveyed expressly, by implication, or by estoppel. This product is for internal research purposes only and is not for use in commercial applications of any kind, including, without limitation, quality control and commercial services such as reporting the results of purchaser's activities for a fee or other form of consideration. For information on obtaining additional rights, please contact outlicensing@lifetech.com or Out Licensing, Life Technologies, 5791 Van Allen Way, Carlsbad, California 92008.

©2012 Life Technologies Corporation. All rights reserved. The trademarks mentioned herein are the property of Life Technologies Corporation or their respective owners.

For support visit www.lifetechnologies.com/support or email techsupport@lifetech.com

www.lifetechnologies.com

Revision Date: 15 January 2012

life
technologies™