

ABfinity™ SMAD1 Recombinant Rabbit Monoclonal Antibody

Publication Part No. MAN0006627

Rev. 1.00

Catalog Number: 701168

Store at 2 to 8°C (short-term), or -20°C (long-term)

Clonality:	Monoclonal	Host/Class:	Rabbit IgG
Concentration:	0.5 mg/mL	Reactivity:	Human SMAD1
Quantity:	100 µg	Predicted Reactivity:	Human
Volume:	200 µL		

Product Description

SMAD1 belongs to the SMAD family of proteins, which are downstream effectors of the TGFβ/BMP signaling pathway. Members of the SMAD family transmit TGF-β signals from the cell surface into the nucleus. Once in the nucleus, SMADs can target a variety of DNA binding proteins to regulate transcriptional responses. SMAD1 is a receptor-regulated SMAD (R-SMADs), which mediates signals of bone morphogenetic proteins (BMPs) in the cell to regulate a wide range of critical processes including morphogenesis, cell-fate determination, proliferation, differentiation, and apoptosis.

Product Specifications

Immunogen:	Peptide corresponding to amino acids 178–193 of human SMAD1
Alternate Names:	MADR1, MADH1 (Mothers against decapentaplegic homolog 1), BSP1
Apparent MW:	~52 kDa
Gene ID:	4086
Protein Accession No.:	Q15797
Sequence Identity:	Human
Sequence Homology:	Mouse, Rat, Rabbit, Horse
Clone/PAD:	12H1L14
Lot:	See product label

Product Applications

Application	Species	Test Material	Concentration
Western blotting	Human	C2C12 cells	1–2 µg/mL
Indirect ELISA	Human	Peptide	1.5 × 10 ⁻⁴ to 3 µg/mL

Storage and Handling

Store the antibody at 2 to 8°C for up to 1 month, or -20°C for long storage. Avoid repeated freezing and thawing.

Stability

Expires one year from date of receipt when stored as instructed.

Storage Buffer

Phosphate buffered saline (PBS) with 0.09% sodium azide.

Caution: Sodium azide is an extremely toxic and dangerous compound particularly when combined with acids or metals. Properly dispose of solutions containing sodium azide.

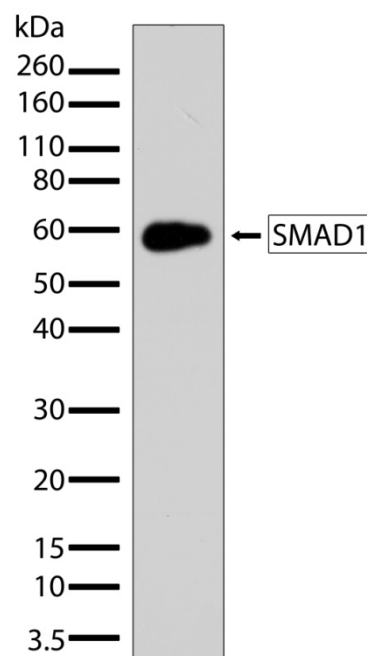


Figure 1 Western blot analysis of ABfinity™ SMAD1 Recombinant Rabbit Monoclonal Antibody (Cat. no. 701168). Western blot analysis was performed on C2C12 whole cell extracts. Endogenous SMAD1 at ~60 kDa was detected using ABfinity™ SMAD1 Recombinant Rabbit Monoclonal Antibody at a concentration of 2 µg/mL. The blot was developed using chemiluminescence (ECL) method.

For research use only. Not for human or animal therapeutic or diagnostic use.

Manufacturing Site • 7335 Executive Way • Frederick • MD 21704 • E-mail: techsupport@lifetech.com

Product Documentation

To obtain a Certificate of Analysis or Safety Data Sheets (SDSs), visit www.lifetechnologies.com/support.

Related Products

Product Name	Quantity	Catalog no.
iBlot® Dry Blotting System	1 unit	IB1001
WesternBreeze® Chromogenic Kit Anti-Rabbit	1 kit	WB7105
WesternBreeze® Chemiluminescent Kit, Anti-Rabbit	1 kit	WB7106
Goat anti-mouse (H+L), HRP conj.	1 mg	G21040
Goat anti-rabbit (H+L), HRP conj.	1 mg	G21234
Goat anti-mouse (H+L), AP conj.	1 mg	G21060
Goat anti-rabbit (H+L), AP conj.	1 mg	G21079
Nitrocellulose, 0.2 µm	20/pack	LC2000

Explanation of symbols

Symbol	Description	Symbol	Description
	Catalogue Number		Batch code
	Research Use Only		In vitro diagnostic medical device
	Use by		Temperature limitation
	Manufacturer		European Community authorised representative
	Without, does not contain		With, contains
	Protect from light		Consult accompanying documents
	Directs the user to consult instructions for use (IFU), accompanying the product.		

Limited Product Warranty

Life Technologies Corporation and/or its affiliate(s) warrant their products as set forth in the Life Technologies' General Terms and Conditions of Sale found on Life Technologies' website at www.lifetechnologies.com/termsandconditions. If you have any questions, please contact Life Technologies at www.lifetechnologies.com/support.

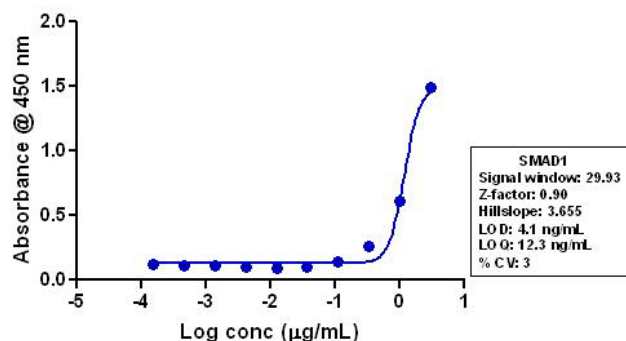


Figure 2 Indirect ELISA of ABfinity™ SMAD1 Recombinant Rabbit Monoclonal Antibody (Cat. no. 701168). Indirect ELISA was performed using various dilutions of ABfinity™ SMAD1 Recombinant Rabbit Monoclonal Antibody (Cat. no. 701168) to detect SMAD1 peptide coated onto the plate. A non-linear regression analysis was performed (4 PL) and LOD and LOQ for the antibody was determined.

Limited Use Label License: Research Use Only

The purchase of this product conveys to the purchaser the limited, non-transferable right to use the purchased amount of the product only to perform internal research for the sole benefit of the purchaser. No right to resell this product or any of its components is conveyed expressly, by implication, or by estoppel. This product is for internal research purposes only and is not for use in commercial applications of any kind, including, without limitation, quality control and commercial services such as reporting the results of purchaser's activities for a fee or other form of consideration. For information on obtaining additional rights, please contact outlicensing@lifetech.com or Out Licensing, Life Technologies, 5791 Van Allen Way, Carlsbad, California 92008.

LIFE TECHNOLOGIES AND/OR ITS AFFILIATE(S) DISCLAIM ALL WARRANTIES WITH RESPECT TO THIS DOCUMENT, EXPRESSED OR IMPLIED, INCLUDING BUT NOT LIMITED TO THOSE OF MERCHANTABILITY, FITNESS FOR A PARTICULAR PURPOSE, OR NON-INFRINGEMENT. TO THE EXTENT ALLOWED BY LAW, IN NO EVENT SHALL LIFE TECHNOLOGIES AND/OR ITS AFFILIATE(S) BE LIABLE, WHETHER IN CONTRACT, TORT, WARRANTY, OR UNDER ANY STATUTE OR ON ANY OTHER BASIS FOR SPECIAL, INCIDENTAL, INDIRECT, PUNITIVE, MULTIPLE OR CONSEQUENTIAL DAMAGES IN CONNECTION WITH OR ARISING FROM THIS DOCUMENT, INCLUDING BUT NOT LIMITED TO THE USE THEREOF.

©2012 Life Technologies Corporation. All rights reserved. The trademarks mentioned herein are the property of Life Technologies Corporation or their respective owners.

For support visit www.lifetechnologies.com/support or email techsupport@lifetech.com

www.lifetechnologies.com

15 March 2012

life
technologies™