

PDGFR-alpha ABfinity™ Recombinant Rabbit Monoclonal Antibody – Purified

Publication Part no. MAN0005602

Rev. 1.0

Catalog Number: 701142

Store at 2 to 8°C (short-term), or -20°C (long-term)

Clonality: Monoclonal
Concentration: 0.5 mg/mL
Quantity: 100 µg
Volume: 200 µL

Host/Class: Rabbit IgG
Reactivity: Human PDGF receptor (α chain)
Predicted Reactivity: Human

Product Description

PDGFR-alpha (platelet-derived growth factor receptor – alpha chain) belongs to the protein tyrosine kinase family, and binds to the alpha chain of PDGF. Members of the PDGF receptor subfamily are cell surface receptors that act as mitogens for cells of mesenchymal origin, and consist of alpha and beta isoforms of ~190, and 125 kDa, respectively. Activated PDGF receptors act on signaling pathways that control cell growth, actin reorganization, migration, and differentiation. In humans, the gene is located on the q arm of chromosome 4.

Product Specifications

Immunogen: Recombinant protein corresponding to amino acids 259–436 of human platelet-derived growth factor receptor – alpha polypeptide

Alternate Names: PDGFRA, CD140A

Apparent MW: ~190 kDa

Gene ID: 5156

Protein Accession No.: P16234

Sequence Identity: Human

Clone/PAD: 7H13L1

Lot: See product label

Product Applications

Application	Species	Test Material	Concentration
Western blotting	Human	HepG2 cells	1–3 µg/mL
Immunocytochemistry	Human	HeLa cells	1–3 µg/mL
Indirect ELISA	Human	Recombinant protein	1.5 × 10 ⁻⁴ to 3 µg/mL

Storage and Handling

Store the antibody at 2 to 8°C for up to 1 month, or -20°C for long storage. Avoid repeated freezing and thawing.

Stability

Expires one year from date of receipt when stored as instructed.

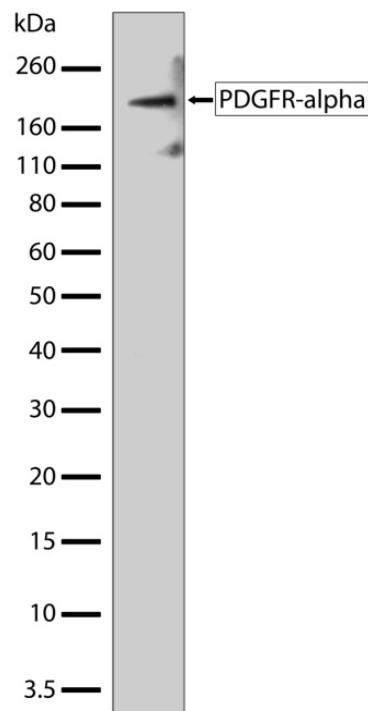


Figure 1 Western blot analysis of PDGFR-alpha ABfinity™ Recombinant Rabbit Monoclonal Antibody (Cat. no. 701142). Western blot analysis was performed on whole cell extracts of HepG2. Endogenous PDGFR-alpha at ~190 kDa was detected using PDGFR-alpha ABfinity™ Recombinant Rabbit Monoclonal Antibody at a concentration of 2 µg/mL. The blot was developed using chemiluminescence (ECL) method.

For research use only. Not for human or animal therapeutic or diagnostic use.

Manufacturing Site • 7335 Executive Way • Frederick • MD 21704 • E-mail: techsupport@invitrogen.com

Storage Buffer

Phosphate buffered saline (PBS) with 0.09% sodium azide.

Note: Sodium azide is an extremely toxic and dangerous compound particularly when combined with acids or metals. Properly dispose of solutions containing sodium azide.

Safety Data Sheets (SDS)

Safety Data Sheets (SDSs) are available at www.invitrogen.com/sds.

Certificate of Analysis

The Certificate of Analysis provides detailed quality control and product qualification information for each product. Certificates of Analysis are available on our website. Go to www.invitrogen.com/support and search for the Certificate of Analysis by product lot number, which is printed on the box.

Related Products

Product Name	Quantity	Catalog No.
iBlot® Dry Blotting System	1 unit	IB1001
WesternBreeze™ Chromogenic Kit Anti-Rabbit	1 kit	WB7105
WesternBreeze™ Chemiluminescent Kit, Anti-Rabbit	1 kit	WB7106
Goat anti-mouse (H+L), HRP conj.	1 mg	G21040
Goat anti-rabbit (H+L), HRP conj.	1 mg	G21234
Goat anti-mouse (H+L), AP conj.	1 mg	G21060
Goat anti-rabbit (H+L), AP conj.	1 mg	G21079
Nitrocellulose, 0.2 µm	20/pack	LC2000

Explanation of symbols

Symbol	Description	Symbol	Description
	Catalogue Number		Batch code
	Research Use Only		<i>In vitro</i> diagnostic medical device
	Use by		Temperature limitation
	Manufacturer		European Community authorised representative
	Without, does not contain		With, contains
	Protect from light		Consult accompanying documents
	Directs the user to consult instructions for use (IFU), accompanying the product.		

Limited Use Label License: Research Use Only

The purchase of this product conveys to the purchaser the limited, non-transferable right to use the purchased amount of the product only to perform internal research for the sole benefit of the purchaser. No right to resell this product or any of its components is conveyed expressly, by implication, or by estoppel. This product is for internal research purposes only and is not for use in commercial applications of any kind, including, without limitation, quality control and commercial services such as reporting the results of purchaser's activities for a fee or other form of consideration. For information on obtaining additional rights, please contact outlicensing@lifetech.com or Out Licensing, Life Technologies, 5791 Van Allen Way, Carlsbad, California 92008.

©2011 Life Technologies Corporation. All rights reserved. The trademarks mentioned herein are the property of Life Technologies Corporation or their respective owners.

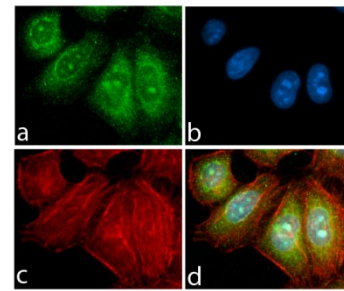


Figure 2 Immunocytochemistry analysis of PDGFR-alpha ABfinity™ Recombinant Rabbit Monoclonal Antibody (Cat. no. 701142). Immunocytochemistry analysis of HeLa cells stained with PDGFR-alpha ABfinity™ Recombinant Rabbit Monoclonal Antibody using **a:** Alexa Fluor® 488 goat anti-rabbit as a secondary antibody (green). **b:** DAPI was used to stain the nucleus (blue), and **c:** Alexa Fluor® 594 phalloidin was used to stain actin (red). **d:** Composite image of cells showing cytoplasmic and nuclear membrane localization of PDGFR-alpha.

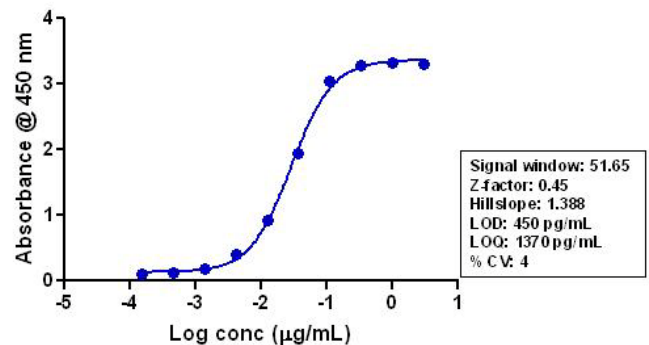


Figure 3 Indirect ELISA of PDGFR-alpha ABfinity™ Recombinant Rabbit Monoclonal Antibody (Cat. no. 701142). Indirect ELISA was performed using various dilutions of PDGFR-alpha ABfinity™ Recombinant Rabbit Monoclonal Antibody (Cat. no. 701142) to detect recombinant PDGFR-alpha protein coated onto the plate. A non-linear regression analysis was performed (4 PL) and LOD and LOQ for the antibody was determined.