

GM-CSF ABfinity™ Recombinant Rabbit Monoclonal Antibody – Purified

Publication Part no. MAN0005268

Rev. Date: 17 October 2011

Catalog Number: 701136

Store at 2–8°C

Clonality: Monoclonal
Concentration: 0.5 mg/mL
Quantity: 100 µg
Volume: 200 µL

Host/Class: Rabbit IgG
Reactivity: Human GM-CSF
Predicted Reactivity: Human

Product Description

GM-CSF (granulocyte-macrophage colony stimulating factor), is a cytokine that controls the production, differentiation, and function of granulocytes and macrophages. GM-CSF is secreted by fibroblasts, macrophages, endothelial cells, T cells and mast cells. Recent evidence shows that GM-CSF plays a key role in inflammatory and autoimmune diseases. In humans, the gene is located on the q arm of chromosome 5.

Product Specifications

Immunogen: Recombinant protein corresponding to amino acids 18–144 of human granulocyte-macrophage colony stimulating factor

Alternate Names: CSF2, Sargramostim

Apparent MW: ~16 kDa

Gene ID: 1437

Protein Accession No.: P04141

Sequence Identity: Human

Clone/PAD: 7H3L2

Lot: See product label

Product Applications

| Application | Species | Test Material | Concentration |
|------------------|---------|----------------------------|-----------------------------------|
| Western blotting | Human | Active recombinant protein | 1–3 µg/mL |
| Indirect ELISA | Human | Recombinant protein | 1.5 × 10 ⁻⁴ to 3 µg/mL |

Storage and Handling

Store the antibody at 2–8°C for up to 1 month, or –20°C for long storage. Avoid repeated freezing and thawing.

Stability

Expires one year from date of receipt when stored as instructed.

Storage Buffer

Phosphate buffered saline (PBS) with 0.09% sodium azide.

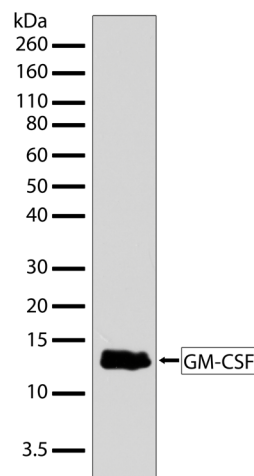


Figure 1 Western blot analysis of GM-CSF ABfinity™ Recombinant Rabbit Monoclonal Antibody (Cat. no. 701136). Western blot analysis was performed on active recombinant human GM-CSF protein. A band corresponding to recombinant human GM-CSF at ~14 kDa was detected using GM-CSF ABfinity™ Recombinant Rabbit Monoclonal Antibody at a concentration of 2.5 µg/mL. The blot was developed using chemiluminescence (ECL) method.

For research use only. Not for human or animal therapeutic or diagnostic use.

Manufacturing Site • 7335 Executive Way • Frederick • MD 21704 • E-mail: techsupport@invitrogen.com

Safety Data Sheets (SDS)

Safety Data Sheets (SDSs) are available at www.invitrogen.com/sds.

Certificate of Analysis

The Certificate of Analysis provides detailed quality control and product qualification information for each product. Certificates of Analysis are available on our website. Go to www.invitrogen.com/support and search for the Certificate of Analysis by product lot number, which is printed on the box.

Related Products

| Product Name | Quantity | Catalog No. |
|--|----------|-------------|
| iBlot® Dry Blotting System | 1 unit | IB1001 |
| WesternBreeze™ Chromogenic Kit Anti-Rabbit | 1 kit | WB7105 |
| WesternBreeze™ Chemiluminescent Kit, Anti-Rabbit | 1 kit | WB7106 |
| Goat anti-mouse (H+L), HRP conj. | 1 mg | G21040 |
| Goat anti-rabbit (H+L), HRP conj. | 1 mg | G21234 |
| Goat anti-mouse (H+L), AP conj. | 1 mg | G21060 |
| Goat anti-rabbit (H+L), AP conj. | 1 mg | G21079 |
| Nitrocellulose, 0.2 µm | 20/pack | LC2000 |

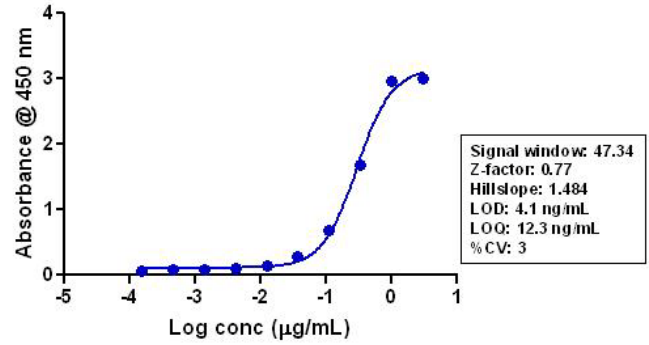


Figure 2 Indirect ELISA of GM-CSF ABfinitly™ Recombinant Rabbit Monoclonal Antibody (Cat. no. 701136). Indirect ELISA was performed using various dilutions of GM-CSF ABfinitly™ Recombinant Rabbit Monoclonal Antibody (Cat. no. 701136) to detect recombinant GM-CSF protein coated onto the plate. A non-linear regression analysis was performed (4 PL) and LOD and LOQ for the antibody was determined.

Explanation of symbols

| Symbol | Description | Symbol | Description |
|--------|---|--------|--|
| | Catalogue Number | | Batch code |
| | Research Use Only | | <i>In vitro</i> diagnostic medical device |
| | Use by | | Temperature limitation |
| | Manufacturer | | European Community authorised representative |
| | Without, does not contain | | With, contains |
| | Protect from light | | Consult accompanying documents |
| | Directs the user to consult instructions for use (IFU), accompanying the product. | | |

Limited Use Label License: Research Use Only

The purchase of this product conveys to the purchaser the limited, non-transferable right to use the purchased amount of the product only to perform internal research for the sole benefit of the purchaser. No right to resell this product or any of its components is conveyed expressly, by implication, or by estoppel. This product is for internal research purposes only and is not for use in commercial applications of any kind, including, without limitation, quality control and commercial services such as reporting the results of purchaser's activities for a fee or other form of consideration. For information on obtaining additional rights, please contact outlicensing@lifetech.com or Out Licensing, Life Technologies, 5791 Van Allen Way, Carlsbad, California 92008.

©2011 Life Technologies Corporation. All rights reserved. The trademarks mentioned herein are the property of Life Technologies Corporation or their respective owners.

For support visit www.invitrogen.com/support or email techsupport@invitrogen.com

www.lifetechnologies.com

life
technologies™