

CCL4/MIP1B Rabbit Recombinant Oligoclonal Antibody – Purified



Catalog no. 710016

(See product label for lot information)

Clone/PAD: C4HCLC
Isotype: IgG
Gene ID: 6351
Protein Acc. no.: P13236
Qty: 100 µg
Volume: 200 µl
Concentration: 0.5 mg/mL

Formulation

PBS + 0.09% sodium azide

Application

For use in Western Blotting

Reactivity

This antibody is specific for human CCL4

Immunogen

Recombinant protein

Immunogen sequence

Amino acids 24-92

Sequence Identity

Human

Expected Reactivity

Based on sequence identity and similarity, reactivity to Human is expected.

Storage

2-8°C for up to 1 month, -20°C for long term storage. Avoid repeated freezing and thawing.

Expiration Date

Expires one year from date of receipt when stored as instructed.

Background

CCL4 (Chemokine (C-C motif) ligand 4), also known as Macrophage inflammatory protein-1β (MIP-1β) is a CC chemokine with specificity for CCR5 receptors. It is a chemoattractant for natural killer cells, monocytes and a variety of other immune cells (1-3). This was originally co-purified from medium conditioned by an LPS-stimulated murine macrophage cell line. It also induces the synthesis and release of other pro-inflammatory cytokines such as interleukin 1 (IL-1), IL-6 and TNF-α from fibroblasts and macrophages. The genes CCL4 is located on human chromosome 17q (4).

References

- (1) Kamin-Lewis R, Abdelwahab SF, Trang C, Baker A, DeVico AL, Gallo RC, Lewis GK (2001). "Perforin-low memory CD8+ cells are the predominant T cells in normal humans that synthesize the beta -chemokine macrophage inflammatory protein-1beta". Proc. Natl. Acad. Sci. U.S.A. 98 (16): 9283-8.
- (2) Irving SG, Zipfel PF, Balke J, McBride OW, Morton CC, Burd PR, Siebenlist U, Kelly K (1990). "Two inflammatory mediator cytokine genes are closely linked and variably amplified on chromosome 17q". Nucleic Acids Res. 18 (11): 3261-70.
- (3) Bystry RS, Aluvihare V, Welch KA, Kallikourdis M, Betz AG (2001). "B cells and professional APCs recruit regulatory T cells via CCL4". Nat. Immunol. 2 (12): 1126-32.
- (4) Irving, Zipfel PF, Balke J, McBride OW, Morton CC, Burd PR, Siebenlist U, Kelly K (1990). Two inflammatory mediator cytokine genes are closely linked and variably amplified on chromosome 17q. Nucleic Acids Res. 18: 3261-3270, 1990.

Following applications had been tested during development. To make sure the consistency and reliability in the future lots, each lot is tested with antigen ELISA for specificity and potency. Each lot is also tested with SDS-PAGE, to ensure high purity.

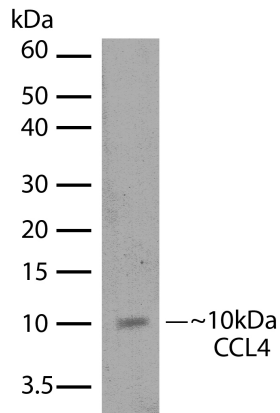
Applications:

	Species	Test Material	Concentration
Western Blotting	Mouse	RAW264.7 + LPS	4-5 µg/ml

For Research Use Only. Not for human or animal therapeutic or diagnostic use.

www.invitrogen.com

Invitrogen Corporation • 7335 Executive Way • Frederick • MD 21704 • Tel: 800.955.6288 • E-mail: techsupport@invitrogen.com



Western Blot of CCL4 labeled with CCL4 Rabbit Recombinant Oligoclonal Antibody (Cat. No. 710016).

CCL4 Rabbit Recombinant Oligoclonal Antibody (5 µg/ml) was used to label CCL4 in LPS stimulated RAW264.7 Cell Lysate (30 µg/lane). The western was performed using the WesternBreeze® kit with NBT/BCIP as the substrate (Cat. No.WB7105).

Explanation of symbols

Symbol	Description	Symbol	Description
	Catalogue Number		Batch code
	Research Use Only		<i>In vitro</i> diagnostic medical device
	Use by		Temperature limitation
	Manufacturer		European Community authorised representative
	Without, does not contain		With, contains
	Protect from light		Consult accompanying documents
	Directs the user to consult instructions for use (IFU), accompanying the product.		

For Research Use Only. Not for human or animal therapeutic or diagnostic use.

www.invitrogen.com

Invitrogen Corporation • 7335 Executive Way • Frederick • MD 21704 • Tel: 800.955.6288 • E-mail: techsupport@invitrogen.com