

## ABfinity™ IL-13 (Ms) Recombinant Rabbit Monoclonal Antibody

Publication Part no. MAN0006819

Rev. 1.00

Catalog Number: 701123

Store at 2° to 8°C (short-term), or -20°C (long-term)

**Clonality:** Monoclonal  
**Concentration:** 0.5 mg/mL  
**Quantity:** 100 µg  
**Volume:** 200 µL

**Host/Class:** Rabbit IgG  
**Reactivity:** Human IL-13  
**Predicted Reactivity:** Human

### Product Description

IL-13 is a cytokine involved in regulating inflammatory and immune responses. It down-regulates macrophage activity, thereby inhibiting the production of pro-inflammatory cytokines and chemokines, and is involved in allergen-induced asthma through mechanisms independent of IgE and eosinophils. IL-13 also regulates several stages of B cell maturation and differentiation. It up-regulates CD23 and MHC class II expression, and promotes IgE isotype switching of B cells. Structurally, IL-13 closely resembles IL-3, IL-4, IL-5 and GM-CSF.

### Product Specifications

**Immunogen:** Recombinant protein corresponding to amino acids 22–131 of human IL-13  
**Alternate Names:** IL-13, P600, NC300  
**Apparent MW:** ~13 kDa  
**Gene ID:** 3596  
**Protein Accession No.:** P35225  
**Sequence Identity:** Mouse  
**Sequence Homology:** Human, Horse, Monkey, Rat  
**Clone/PAD:** 21H6H5  
**Lot:** See product label

### Product Applications

Application	Species	Test Material	Concentration
Western blotting	Mouse	Recombinant protein	1–2 µg/mL
Indirect ELISA	Mouse	Recombinant protein	1 µg/mL

### Storage and Handling

Store the antibody at 2 to 8°C for up to 1 month, -20°C for long storage. Avoid repeated freezing and thawing.

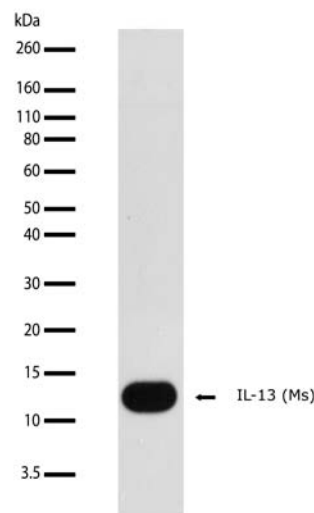
### Stability

When stored as instructed, expires one year from date of receipt unless otherwise indicated on product label.

### Storage Buffer

Phosphate buffered saline (PBS) with 0.09% sodium azide.

**Caution:** Sodium azide is an extremely toxic and dangerous compound particularly when combined with acids or metals. Properly dispose of solutions containing sodium azide.



**Figure 1** Western blot analysis of ABfinity™ IL-13 (Ms) Recombinant Rabbit Monoclonal Antibody (Cat. no. 701123).

Western blot analysis was performed using recombinant IL-13 (Ms) protein. IL-13 (Ms) protein was detected at ~13 kDa using ABfinity™ IL-13 (Ms) Recombinant Rabbit Monoclonal Antibody at a concentration of 1 µg/mL. The blot was developed using chemiluminescence (ECL) method.

**For research use only. Not for human or animal therapeutic or diagnostic use.**

Manufacturing Site • 7335 Executive Way • Frederick • MD 21704 • E-mail: [techsupport@lifetech.com](mailto:techsupport@lifetech.com)

## Product Documentation

To obtain a Certificate of Analysis or Safety Data Sheets (SDSs), visit [www.lifetechnologies.com/support](http://www.lifetechnologies.com/support).

## Related Products

Product Name	Quantity	Catalog no.
iBlot® Dry Blotting System	1 unit	IB1001
WesternBreeze® Chromogenic Kit Anti-Rabbit	1 kit	WB7105
WesternBreeze® Chemiluminescent Kit, Anti-Rabbit	1 kit	WB7106
Goat anti-mouse (H+L), HRP conj.	1 mg	G21040
Goat anti-rabbit (H+L), HRP conj.	1 mg	G21234
Goat anti-mouse (H+L), AP conj.	1 mg	G21060
Goat anti-rabbit (H+L), AP conj.	1 mg	G21079
Nitrocellulose, 0.2 µm	20/pack	LC2000

### Explanation of symbols

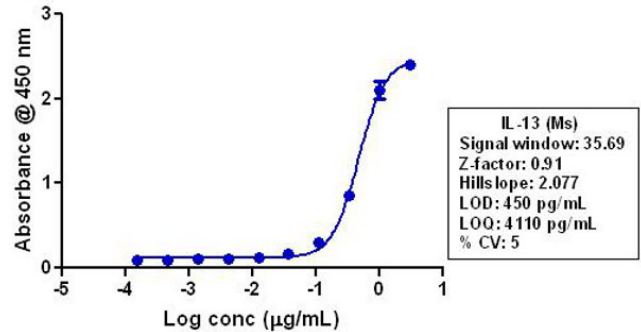
Symbol	Description	Symbol	Description
	Catalogue Number		Batch code
	Research Use Only		In vitro diagnostic medical device
	Use by		Temperature limitation
	Manufacturer		European Community authorised representative
	Without, does not contain		With, contains
	Protect from light		Consult accompanying documents
	Directs the user to consult instructions for use (IFU), accompanying the product.		

## Limited Product Warranty

Life Technologies Corporation and/or its affiliate(s) warrant their products as set forth in the Life Technologies' General Terms and Conditions of Sale found on Life Technologies' website at [www.lifetechnologies.com/termsandconditions](http://www.lifetechnologies.com/termsandconditions). If you have any questions, please contact Life Technologies at [www.lifetechnologies.com/support](http://www.lifetechnologies.com/support).

## Limited Use Label License: Research Use Only

The purchase of this product conveys to the purchaser the limited, non-transferable right to use the purchased amount of the product only to perform internal research for the sole benefit of the purchaser. No right to resell this product or any of its components is conveyed expressly, by implication, or by estoppel. This product is for internal research purposes only and is not for use in commercial applications of any kind, including, without limitation, quality control and commercial services such as reporting the results of purchaser's activities for a fee or other form of consideration. For information on obtaining additional rights, please contact [outlicensing@lifetech.com](mailto:outlicensing@lifetech.com) or Out Licensing, Life Technologies, 5791 Van Allen Way, Carlsbad, California 92008.



**Figure 2** Indirect ELISA of ABfinity™ IL-13 (Ms) Recombinant Rabbit Monoclonal Antibody (Cat. no. 701123).

Indirect ELISA was performed using various dilutions of ABfinity™ IL-13 (Ms) Recombinant Rabbit Monoclonal Antibody (Cat. no. 701123) to detect recombinant IL13 (Ms) protein coated onto the plate. A non-linear regression analysis was performed (4 PL) and LOD and LOQ for the antibody was determined.

LIFE TECHNOLOGIES AND/OR ITS AFFILIATE(S) DISCLAIM ALL WARRANTIES WITH RESPECT TO THIS DOCUMENT, EXPRESSED OR IMPLIED, INCLUDING BUT NOT LIMITED TO THOSE OF MERCHANTABILITY, FITNESS FOR A PARTICULAR PURPOSE, OR NON-INFRINGEMENT. TO THE EXTENT ALLOWED BY LAW, IN NO EVENT SHALL LIFE TECHNOLOGIES AND/OR ITS AFFILIATE(S) BE LIABLE, WHETHER IN CONTRACT, TORT, WARRANTY, OR UNDER ANY STATUTE OR ON ANY OTHER BASIS FOR SPECIAL, INCIDENTAL, INDIRECT, PUNITIVE, MULTIPLE OR CONSEQUENTIAL DAMAGES IN CONNECTION WITH OR ARISING FROM THIS DOCUMENT, INCLUDING BUT NOT LIMITED TO THE USE THEREOF.

©2012 Life Technologies Corporation. All rights reserved. The trademarks mentioned herein are the property of Life Technologies Corporation or their respective owners.

For support visit [www.lifetechnologies.com/support](http://www.lifetechnologies.com/support) or email [techsupport@lifetech.com](mailto:techsupport@lifetech.com)

[www.lifetechnologies.com](http://www.lifetechnologies.com)

15 May 2012

**life**  
technologies™