

I kappa B-alpha ABfinity™ Recombinant Rabbit Monoclonal Antibody – Purified

Publication Part no. MAN0005060

Rev. Date: 15 September 2011

Catalog Number: 701098

Store at 2–8°C

Clonality:	Monoclonal	Host/Class:	Rabbit IgG
Concentration:	0.5 mg/mL	Reactivity:	Human NF-kappa-B inhibitor alpha
Quantity:	100 µg	Predicted Reactivity:	Human
Volume:	200 µL		

Product Description

I kappa B-alpha (Inhibitor of Nuclear Factor-κB α isoform) is a 40 kDa protein that functions to inhibit NF-κB activity. The inhibition occurs via protein-protein interaction between IκB proteins and NF-κB dimers in the cytosol. The interaction of IκBα with NF-κB masks the nuclear localization sequence of NF-κB, preventing NF-κB translocation to the nucleus. A variety of stimuli can activate gene expression by liberating NF-κB through the degradation of IκBα. These stimuli include the proinflammatory cytokines TNF-α and IL-1β, chemokines, PMA, growth factors, LPS, UV irradiation, viral infection, as well as various chemical and physical stresses. In humans, the gene is located on the q arm of chromosome 14.

Product Specifications

Immunogen:	Recombinant protein corresponding to amino acids 1–110 of human NF-kappa-B inhibitor alpha
Alternate Names:	NFKBIA (nuclear factor of kappa light polypeptide gene enhancer in B-cells inhibitor, alpha), IKBA, MAD3
Apparent MW:	~36 kDa
Gene ID:	4792
Protein Accession No.:	P25963
Sequence Identity:	Human
Clone/PAD:	6H7L22
Lot:	See product label

Product Applications

Application	Species	Test Material	Concentration
Western blotting	Human	HepG2 cells	0.5–2 µg/mL
Indirect ELISA	Human	Recombinant protein	1.5 × 10 ⁻⁴ to 3 µg/mL

Storage and Handling

Store the antibody at 2–8°C for up to 1 month, or –20°C for long storage. Avoid repeated freezing and thawing.

Stability

Expires one year from date of receipt when stored as instructed.

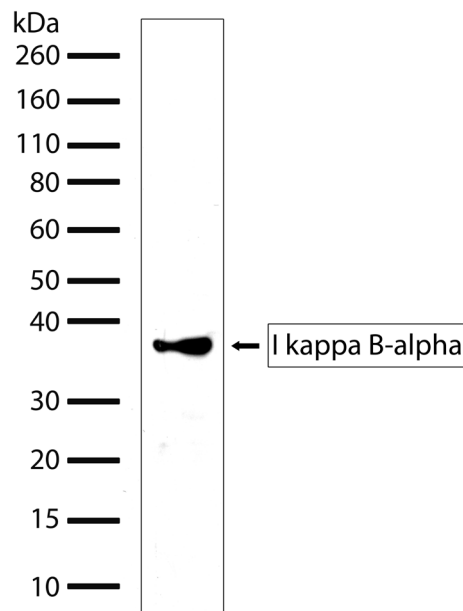


Figure 1 Western blot analysis of I kappa B-alpha ABfinity™ Recombinant Rabbit Monoclonal Antibody (Cat. no. 701098). Western blot analysis was performed on whole cell extracts of HepG2. Endogenous I kappa B-alpha protein at ~36 kDa was detected using I kappa B-alpha ABfinity™ Recombinant Rabbit Monoclonal Antibody at a concentration of 1 µg/mL.

For research use only. Not for human or animal therapeutic or diagnostic use.

Manufacturing Site • 7335 Executive Way • Frederick • MD 21704 • E-mail: techsupport@invitrogen.com

Storage Buffer

Phosphate buffered saline (PBS) with 0.09% sodium azide.

Safety Data Sheets (SDS)

Safety Data Sheets (SDSs) are available at www.invitrogen.com/sds.

Certificate of Analysis

The Certificate of Analysis provides detailed quality control and product qualification information for each product. Certificates of Analysis are available on our website. Go to www.invitrogen.com/support and search for the Certificate of Analysis by product lot number, which is printed on the box.

Related Products

Product Name	Quantity	Catalog No.
iBlot® Dry Blotting System	1 unit	IB1001
WesternBreeze™ Chromogenic Kit Anti-Rabbit	1 kit	WB7105
WesternBreeze™ Chemiluminescent Kit, Anti-Rabbit	1 kit	WB7106
Goat anti-mouse (H+L), HRP conj.	1 mg	G21040
Goat anti-rabbit (H+L), HRP conj.	1 mg	G21234
Goat anti-mouse (H+L), AP conj.	1 mg	G21060
Goat anti-rabbit (H+L), AP conj.	1 mg	G21079
Nitrocellulose, 0.2 µm	20/pack	LC2000

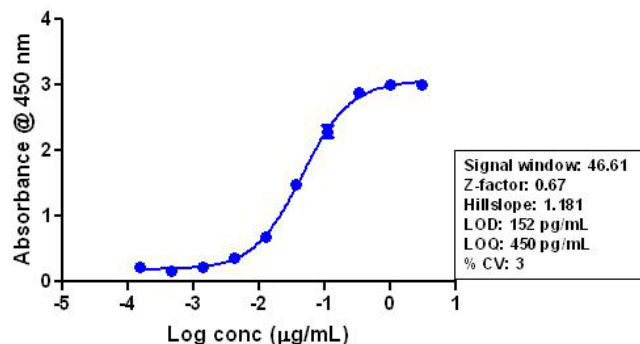


Figure 2 Indirect ELISA of I kappa B-alpha ABfinity™ Recombinant Rabbit Monoclonal Antibody (Cat. no. 701098). Indirect ELISA was performed using various dilutions of I kappa B-alpha ABfinity™ Recombinant Rabbit Monoclonal Antibody (Cat. no. 701098) to detect recombinant I kappa B-alpha protein coated onto the plate. A non-linear regression analysis was performed (4 PL) and LOD and LOQ for the antibody was determined.

Explanation of symbols

Symbol	Description	Symbol	Description
	Catalogue Number		Batch code
	Research Use Only		In vitro diagnostic medical device
	Use by		Temperature limitation
	Manufacturer		European Community authorised representative
	Without, does not contain		With, contains
	Protect from light		Consult accompanying documents
	Directs the user to consult instructions for use (IFU), accompanying the product.		

Limited Use Label License: Research Use Only

The purchase of this product conveys to the purchaser the limited, non-transferable right to use the purchased amount of the product only to perform internal research for the sole benefit of the purchaser. No right to resell this product or any of its components is conveyed expressly, by implication, or by estoppel. This product is for internal research purposes only and is not for use in commercial applications of any kind, including, without limitation, quality control and commercial services such as reporting the results of purchaser's activities for a fee or other form of consideration. For information on obtaining additional rights, please contact outlicensing@lifetech.com or Out Licensing, Life Technologies, 5791 Van Allen Way, Carlsbad, California 92008.

©2011 Life Technologies Corporation. All rights reserved. The trademarks mentioned herein are the property of Life Technologies Corporation or their respective owners.

For support visit www.invitrogen.com/support or email techsupport@invitrogen.com

www.lifetechnologies.com

life
technologies™