

MCP3 ABfinity™ Recombinant Rabbit Monoclonal Antibody – Purified

Publication Part no. MAN0005257

Rev. Date: 17 October 2011

Catalog Number: 701088

Store at 2–8°C

Clonality: Monoclonal
Concentration: 0.5 mg/mL
Quantity: 100 µg
Volume: 200 µL

Host/Class: Rabbit IgG
Reactivity: Human MCP3
Predicted Reactivity: Human

Product Description

The monocyte chemoattractant protein-3 (MCP3) is a secreted chemokine possessing two adjacent cysteines (C-C motif) at the N-terminus. MCP3 has been reported to interact with several C-C chemokine receptors, which can be simultaneously, or selectively expressed on leukocyte subpopulations (e.g., monocytes, T cells, and NK cells). It acts in chemokine receptor mediated recruitment of inflammatory cells during inflammation, and is essential for innate immune defense against microbial infection. The gene is located on chromosome 17q11.2-q12.

Product Specifications

Immunogen: Recombinant protein corresponding to amino acids 24–99 of human monocyte chemoattractant protein 3

Alternate Names: CCL7, SCYA7

Apparent MW: ~11 kDa

Gene ID: 6354

Protein Accession No.: P80098

Sequence Identity: Human

Clone/PAD: 3H1L3

Lot: See product label

Product Applications

Application	Species	Test Material	Concentration
Western blotting	Human	Active recombinant protein	0.1–1 µg/mL
Indirect ELISA	Human	Recombinant protein	1.5 × 10 ⁻⁴ to 3 µg/mL

Storage and Handling

Store the antibody at 2–8°C for up to 1 month, or –20°C for long storage. Avoid repeated freezing and thawing.

Stability

Expires one year from date of receipt when stored as instructed.

Storage Buffer

Phosphate buffered saline (PBS) with 0.09% sodium azide.

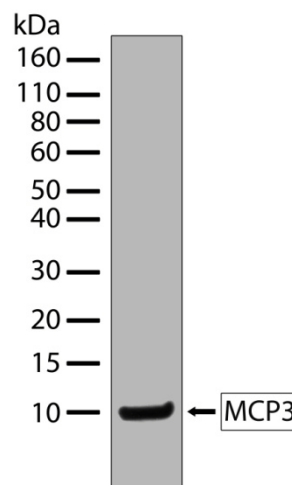


Figure 1 Western blot analysis of MCP3 ABfinity™ Recombinant Rabbit Monoclonal Antibody (Cat. no. 701088). Western blot analysis was performed on active recombinant human MCP3 protein. A band corresponding to recombinant human MCP3 at ~9 kDa was detected using MCP3 ABfinity™ Recombinant Rabbit Monoclonal Antibody at a concentration of 1 µg/mL. The blot was developed using chemiluminescence (ECL) method.

For research use only. Not for human or animal therapeutic or diagnostic use.

Manufacturing Site • 7335 Executive Way • Frederick • MD 21704 • E-mail: techsupport@invitrogen.com

Safety Data Sheets (SDS)

Safety Data Sheets (SDSs) are available at www.invitrogen.com/sds.

Certificate of Analysis

The Certificate of Analysis provides detailed quality control and product qualification information for each product. Certificates of Analysis are available on our website. Go to www.invitrogen.com/support and search for the Certificate of Analysis by product lot number, which is printed on the box.

Related Products

Product Name	Quantity	Catalog No.
iBlot® Dry Blotting System	1 unit	IB1001
WesternBreeze™ Chromogenic Kit Anti-Rabbit	1 kit	WB7105
WesternBreeze™ Chemiluminescent Kit, Anti-Rabbit	1 kit	WB7106
Goat anti-mouse (H+L), HRP conj.	1 mg	G21040
Goat anti-rabbit (H+L), HRP conj.	1 mg	G21234
Goat anti-mouse (H+L), AP conj.	1 mg	G21060
Goat anti-rabbit (H+L), AP conj.	1 mg	G21079
Nitrocellulose, 0.2 µm	20/pack	LC2000

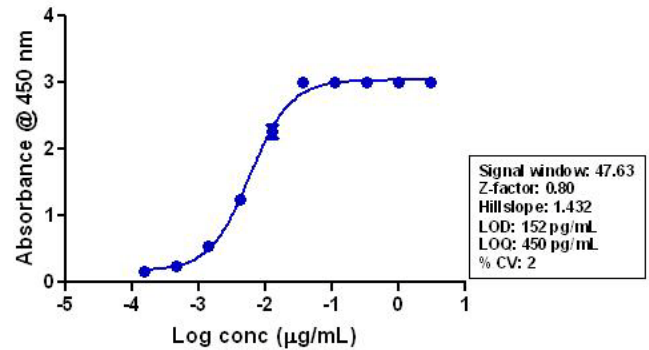


Figure 2 Indirect ELISA of MCP3 ABfinity™ Recombinant Rabbit Monoclonal Antibody (Cat. no. 701088). Indirect ELISA was performed using various dilutions of MCP3 ABfinity™ Recombinant Rabbit Monoclonal Antibody (Cat. no. 701088) to detect recombinant MCP3 protein coated onto the plate. A non-linear regression analysis was performed (4 PL) and LOD and LOQ for the antibody was determined.

Explanation of symbols

Symbol	Description	Symbol	Description
	Catalogue Number		Batch code
	Research Use Only		<i>In vitro</i> diagnostic medical device
	Use by		Temperature limitation
	Manufacturer		European Community authorised representative
	Without, does not contain		With, contains
	Protect from light		Consult accompanying documents
	Directs the user to consult instructions for use (IFU), accompanying the product.		

Limited Use Label License: Research Use Only

The purchase of this product conveys to the purchaser the limited, non-transferable right to use the purchased amount of the product only to perform internal research for the sole benefit of the purchaser. No right to resell this product or any of its components is conveyed expressly, by implication, or by estoppel. This product is for internal research purposes only and is not for use in commercial applications of any kind, including, without limitation, quality control and commercial services such as reporting the results of purchaser's activities for a fee or other form of consideration. For information on obtaining additional rights, please contact outlicensing@lifetech.com or Out Licensing, Life Technologies, 5791 Van Allen Way, Carlsbad, California 92008.

©2011 Life Technologies Corporation. All rights reserved. The trademarks mentioned herein are the property of Life Technologies Corporation or their respective owners.

For support visit www.invitrogen.com/support or email techsupport@invitrogen.com

www.lifetechnologies.com

life
technologies™