

Alpha-Synuclein ABfinity™ Recombinant Rabbit Monoclonal Antibody – Purified

Publication Part no. MAN0005983

Rev. 1.0

Catalog Number: 701085

Store at 2 to 8°C (short-term), or -20°C (long-term)

Clonality: Monoclonal
Concentration: 0.5 mg/mL
Quantity: 100 µg
Volume: 200 µL

Host/Class: Rabbit IgG
Reactivity: Human Synuclein, alpha
Predicted Reactivity: Human

Product Description

Alpha-synuclein is a small, presynaptic protein predominantly expressed in neurons, concentrated at synaptic terminals. Synucleins may be involved in the regulation of dopamine release and transport, and the modulation of synaptic vesicle function. Alpha-synuclein is involved in the formation of SNARE complexes. Alpha-Synuclein is known to reduce the fibrillization of the microtubule-associated protein, tau.

Product Specifications

Immunogen: Peptide corresponding to amino acids 117–125 of human synuclein, alpha
Alternate Names: SNCA, NACP, PARK1
Apparent MW: ~18 kDa
Gene ID: 6622
Protein Accession No.: P37840
Sequence Identity: Human
Clone/PAD: 14H2L1
Lot: See product label

Product Applications

Application	Species	Test Material	Concentration
Western blotting	Human	HeLa, MCF-7, and HEK293 cells	0.5–2 µg/mL
Immunocytochemistry	Human	HeLa cells	1–3 µg/mL
Indirect ELISA	Human	Peptide	1.5 × 10 ⁻⁴ to 3 µg/mL

Storage and Handling

Store the antibody at 2 to 8°C for up to 1 month, or -20°C for long storage. Avoid repeated freezing and thawing.

Stability

Expires one year from date of receipt when stored as instructed.

Storage Buffer

Phosphate buffered saline (PBS) with 0.09% sodium azide.

Note: Sodium azide is an extremely toxic and dangerous compound particularly when combined with acids or metals. Properly dispose of solutions containing sodium azide.

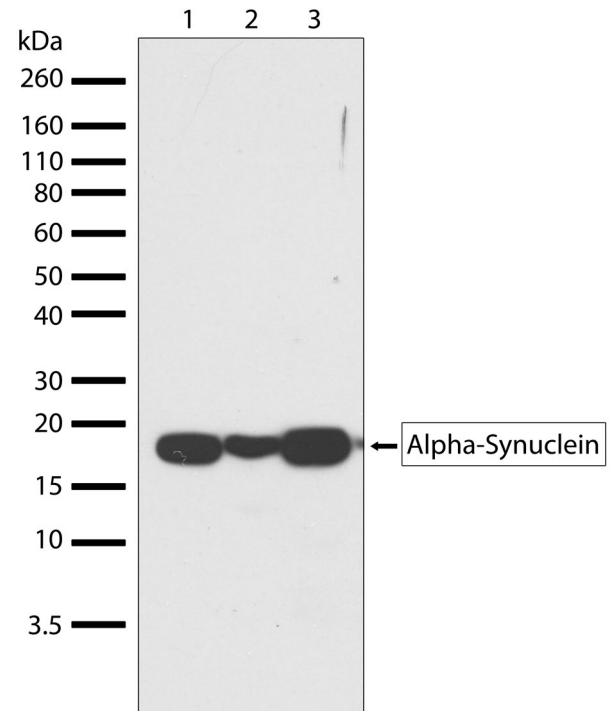


Figure 1 Western blot analysis of Alpha-Synuclein ABfinity™ Recombinant Rabbit Monoclonal Antibody (Cat. no. 701085). Western blot analysis was performed on whole cell extracts of HeLa (lane 1), HEK-293 (lane 2), and MCF-7 (lane 3). Endogenous alpha-synuclein at ~18 kDa was detected using Alpha-Synuclein ABfinity™ Recombinant Rabbit Monoclonal Antibody at a concentration of 1 µg/mL. The blot was developed using chemiluminescence (ECL) method.

For research use only. Not for human or animal therapeutic or diagnostic use.

Manufacturing Site • 7335 Executive Way • Frederick • MD 21704 • E-mail: techsupport@invitrogen.com

Safety Data Sheets (SDS)

Safety Data Sheets (SDSs) are available at www.invitrogen.com/sds.

Certificate of Analysis

The Certificate of Analysis provides detailed quality control and product qualification information for each product. Certificates of Analysis are available on our website. Go to www.invitrogen.com/support and search for the Certificate of Analysis by product lot number, which is printed on the box.

Related Products

Product Name	Quantity	Catalog No.
iBlot® Dry Blotting System	1 unit	IB1001
WesternBreeze® Chromogenic Kit Anti-Rabbit	1 kit	WB7105
WesternBreeze® Chemiluminescent Kit, Anti-Rabbit	1 kit	WB7106
Goat anti-mouse (H+L), HRP conj.	1 mg	G21040
Goat anti-rabbit (H+L), HRP conj.	1 mg	G21234
Goat anti-mouse (H+L), AP conj.	1 mg	G21060
Goat anti-rabbit (H+L), AP conj.	1 mg	G21079
Nitrocellulose, 0.2 µm	20/pack	LC2000

Explanation of symbols

Symbol	Description	Symbol	Description
	Catalogue Number		Batch code
	Research Use Only		In vitro diagnostic medical device
	Use by		Temperature limitation
	Manufacturer		European Community authorised representative
	Without, does not contain		With, contains
	Protect from light		Consult accompanying documents
	Directs the user to consult instructions for use (IFU), accompanying the product.		

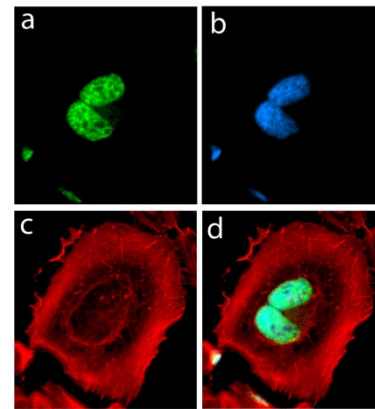


Figure 2 Immunocytochemistry analysis of Alpha-Synuclein ABfinity™ Recombinant Rabbit Monoclonal Antibody (Cat. no. 701085). Immunocytochemistry analysis of HeLa cells stained with Alpha-Synuclein Rabbit Recombinant Oligoclonal Antibody using a: Alexa Fluor® 488 goat anti-rabbit as a secondary antibody (green). b: DAPI stained HeLa nuclei (blue). c: Actin stained with Alexa Fluor® 594 phalloidin (red). d: Composite image of cells showing cytoplasmic and nuclear localization of Alpha-Synuclein.

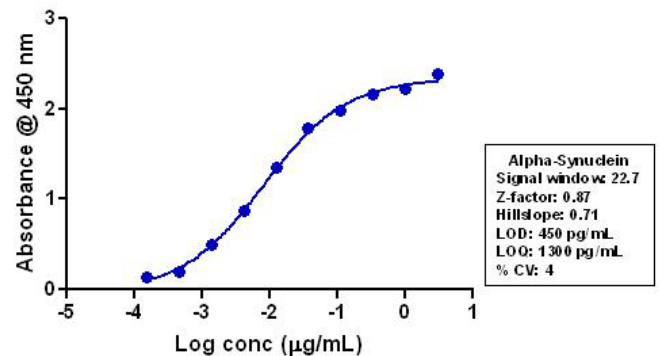


Figure 3 Indirect ELISA of Alpha-Synuclein ABfinity™ Recombinant Rabbit Monoclonal Antibody (Cat. no. 701085). Indirect ELISA was performed using various dilutions of Alpha-Synuclein ABfinity™ Recombinant Rabbit Monoclonal Antibody (Cat. no. 701085) to detect alpha-synuclein peptide coated onto the plate. A non-linear regression analysis was performed (4 PL) and LOD and LOQ for the antibody was determined.

Limited Use Label License: Research Use Only

The purchase of this product conveys to the purchaser the limited, non-transferable right to use the purchased amount of the product only to perform internal research for the sole benefit of the purchaser. No right to resell this product or any of its components is conveyed expressly, by implication, or by estoppel. This product is for internal research purposes only and is not for use in commercial applications of any kind, including, without limitation, quality control and commercial services such as reporting the results of purchaser's activities for a fee or other form of consideration. For information on obtaining additional rights, please contact outlicensing@lifetech.com or Out Licensing, Life Technologies, 5791 Van Allen Way, Carlsbad, California 92008.

©2011 Life Technologies Corporation. All rights reserved. The trademarks mentioned herein are the property of Life Technologies Corporation or their respective owners.

For support visit www.invitrogen.com/support or email techsupport@invitrogen.com

www.lifetechnologies.com

Revision Date: 15 December 2011

life technologies™