

GSK3 beta [pS9] ABfinity™ Recombinant Rabbit Monoclonal Antibody – Purified

Publication Part no. MAN0004990

Rev. Date: 21 August 2011

Catalog Number: 701069

Store at 2–8°C

Clonality: Monoclonal
Concentration: 0.5 mg/mL
Quantity: 100 µg
Volume: 200 µL

Host/Class: Rabbit IgG
Reactivity: Human GSK3 beta
Predicted Reactivity: Human

Product Description

GSK3 beta belongs to the subfamily of glycogen synthase kinases, that plays a central role in energy metabolism, neuronal cell development, and body pattern formation. GSK3 alpha and GSK3 beta are two isoforms with molecular weights of 51 kDa and 47 kDa respectively. The two isoforms have dissimilar function. GSK3 beta plays a key role in insulin and Wnt signaling. The phosphorylation at Ser⁹ of GSK3 beta is shown to inhibit its kinase activity.

Product Specifications

Immunogen: Phosphopeptide corresponding to amino acids 5–13 aa of Human GSK3 beta
Alternate Names: GSK3B
Apparent MW: ~47 kDa
Gene ID: 2932
Protein Accession No.: P49841
Sequence Identity: Human
Sequence Homology: Monkey, Rat and Mouse
Clone/PAD: 5H1L11
Lot: See product label

Product Applications

Application	Species	Test Material	Concentration
Western blotting	Human	HeLa cells	0.5–2 µg/mL
Indirect ELISA	Human	Phosphopeptide	1.5x10 ⁻⁴ to 3 µg/mL

Storage and Handling

Store the antibody at 2–8°C for up to 1 month, or –20°C for long storage. Avoid repeated freezing and thawing.

Stability

Expires one year from date of receipt when stored as instructed.

Storage Buffer

Phosphate buffered saline (PBS) with 0.09% sodium azide.

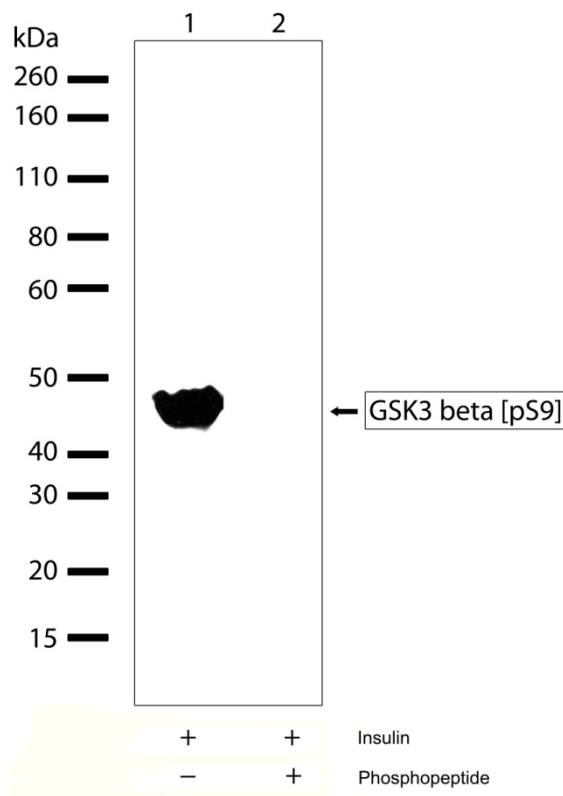


Figure 1 Western blot analysis of GSK3beta [pS9] ABfinity™ Recombinant Rabbit Monoclonal Antibody (Cat. no. 701069). Western blot analysis was performed on whole cell extracts of HeLa cells treated with insulin (100 ng/mL for 15 minutes, lanes 1 and 2). A band corresponding to phosphorylated GSK3 beta at ~47 kDa was detected using GSK3 beta [pS9] ABfinity™ Recombinant Rabbit Monoclonal Antibody at a concentration of 1 µg/mL (lane 1). To confirm specificity, competition was performed with the phosphopeptide (lane 2).

For research use only. Not for human or animal therapeutic or diagnostic use.

Manufacturing Site • 7335 Executive Way • Frederick • MD 21704 • E-mail: techsupport@invitrogen.com

Safety Data Sheets (SDS)

Safety Data Sheets (SDSs) are available at www.invitrogen.com/sds.

Certificate of Analysis

The Certificate of Analysis provides detailed quality control and product qualification information for each product. Certificates of Analysis are available on our website. Go to www.invitrogen.com/support and search for the Certificate of Analysis by product lot number, which is printed on the box.

Related Products

Product Name	Quantity	Catalog No.
iBlot® Dry Blotting System	1 unit	IB1001
WesternBreeze™ Chromogenic Kit Anti-Rabbit	1 kit	WB7105
WesternBreeze™ Chemiluminescent Kit, Anti-Rabbit	1 kit	WB7106
Goat anti-mouse (H+L), HRP conj.	1 mg	G21040
Goat anti-rabbit (H+L), HRP conj.	1 mg	G21234
Goat anti-mouse (H+L), AP conj.	1 mg	G21060
Goat anti-rabbit (H+L), AP conj.	1 mg	G21079
Nitrocellulose, 0.2 µm	20/pack	LC2000

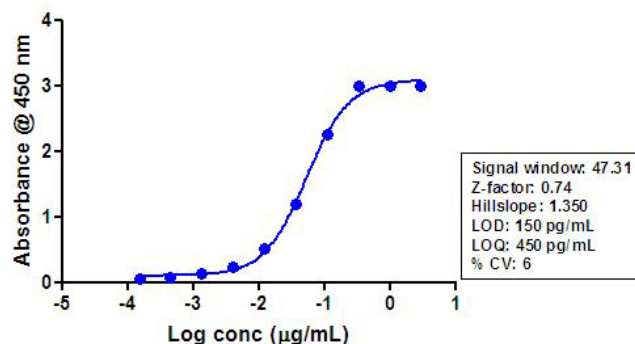


Figure 2 Indirect ELISA of GSK3 beta [pS9] ABfinity™ Recombinant Rabbit Monoclonal Antibody (Cat. no. 701069). Indirect ELISA was performed using various dilutions of GSK3 beta [pS9] ABfinity™ Recombinant Rabbit Monoclonal Antibody (Cat. no. 701069) to detect phospho GSK3 beta [pS9] peptide coated onto the plate. A non-linear regression analysis was performed (4 PL) and LOD and LOQ for the antibody was determined.

Explanation of symbols

Symbol	Description	Symbol	Description
	Catalogue Number		Batch code
	Research Use Only		In vitro diagnostic medical device
	Use by		Temperature limitation
	Manufacturer		European Community authorised representative
	Without, does not contain		With, contains
	Protect from light		Consult accompanying documents
	Directs the user to consult instructions for use (IFU), accompanying the product.		

Limited Use Label License: Research Use Only

The purchase of this product conveys to the purchaser the limited, non-transferable right to use the purchased amount of the product only to perform internal research for the sole benefit of the purchaser. No right to resell this product or any of its components is conveyed expressly, by implication, or by estoppel. This product is for internal research purposes only and is not for use in commercial applications of any kind, including, without limitation, quality control and commercial services such as reporting the results of purchaser's activities for a fee or other form of consideration. For information on obtaining additional rights, please contact outlicensing@lifetech.com or Out Licensing, Life Technologies, 5791 Van Allen Way, Carlsbad, California 92008.

©2011 Life Technologies Corporation. All rights reserved. The trademarks mentioned herein are the property of Life Technologies Corporation or their respective owners.