

IGF1R [pYpY1135/1136] ABfinity™ Recombinant Rabbit Monoclonal Antibody – Purified

Publication Part no. MAN0004987

Rev. Date: 21 August 2011

Catalog Number: 701067

Store at 2–8°C

Clonality: Monoclonal
Concentration: 0.5 mg/mL
Quantity: 100 µg
Volume: 200 µL

Host/Class: Rabbit IgG
Reactivity: Human IGF1R
Predicted Reactivity: Human

Product Description

Insulin growth factor 1 receptor (IGF1R, also known as CD221) belongs to the family of tyrosine receptor kinases. It is involved in activation of various substrates including IGF and neurotensin, regulation of metabolism, cell division, maintenance, and inflammation response. The protein is a tetramer consisting of two alpha, and two beta subunits. The alpha-subunits binds to insulin growth factor 1 with higher affinity than to insulin growth factor 2. Binding results in a conformational change, followed by autophosphorylation of IGF-1R at positions 1134, 1135, 1136. The activated IGF-1R in turn, causes phosphorylation of substrate proteins, followed by sequential activation of RAS, RAF, and mitogen-activated protein kinase isoforms ERK, p38, and JNK, leading to the transcription of genes that drive proliferation. This antibody recognizes the beta-subunit of IGF1R.

Product Specifications

Immunogen: Phosphopeptide corresponding to amino acids 1131–1140 of Human IGF1R
Alternate Names: CD221, JTK13
Apparent MW: ~90 kDa
Gene ID: 3480
Protein Accession No.: P08069
Sequence Identity: Human
Sequence Homology: Mouse, Rat, Monkey, Drosophilla
Clone/PAD: 15H10L8
Lot: See product label

Product Applications

Application	Species	Test Material	Concentration
Western blotting	Human	HeLa cells	1–3 µg/mL
Indirect ELISA	Human	Phosphopeptide	1.5x10 ⁻⁴ to 3 µg/mL

Storage and Handling

Store the antibody at 2–8°C for up to 1 month, or –20°C for long storage. Avoid repeated freezing and thawing.

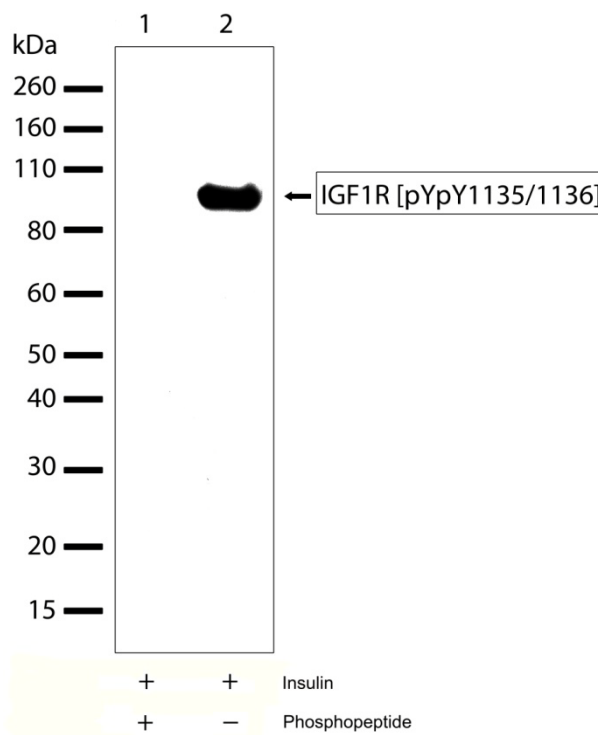


Figure 1 Western Blot analysis of IGF1R [pYpY1135/1136] ABfinity™ Recombinant Rabbit Monoclonal Antibody (Cat. no. 701067). Western blot analysis was performed on whole cell extracts of HeLa cells treated with Insulin (100 ng/mL for 15 minutes, lanes 1 and 2). A band corresponding to phosphorylated IGF1R was detected at ~90 kDa using IGF1R [pYpY1135/1136] ABfinity™ Recombinant Rabbit Monoclonal Antibody at a concentration of 2.5 µg/mL (lane 2). To confirm specificity, competition was performed with the phosphopeptide (lane 1).

For research use only. Not for human or animal therapeutic or diagnostic use.

Manufacturing Site • 7335 Executive Way • Frederick • MD 21704 • E-mail: techsupport@invitrogen.com

Stability

Expires one year from date of receipt when stored as instructed.

Storage Buffer

Phosphate buffered saline (PBS) with 0.09% sodium azide.

Safety Data Sheets (SDS)

Safety Data Sheets (SDSs) are available at www.invitrogen.com/sds.

Certificate of Analysis

The Certificate of Analysis provides detailed quality control and product qualification information for each product. Certificates of Analysis are available on our website. Go to www.invitrogen.com/support and search for the Certificate of Analysis by product lot number, which is printed on the box.

Related Products

Product Name	Quantity	Catalog No.
iBlot [®] Dry Blotting System	1 unit	IB1001
WesternBreeze [™] Chromogenic Kit Anti-Rabbit	1 kit	WB7105
WesternBreeze [™] Chemiluminescent Kit, Anti-Rabbit	1 kit	WB7106
Goat anti-mouse (H+L), HRP conj.	1 mg	G21040
Goat anti-rabbit (H+L), HRP conj.	1 mg	G21234
Goat anti-mouse (H+L), AP conj.	1 mg	G21060
Goat anti-rabbit (H+L), AP conj.	1 mg	G21079
Nitrocellulose, 0.2 µm	20/pack	LC2000

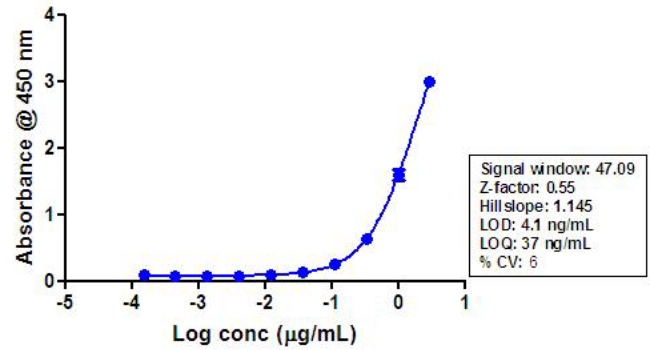


Figure 2 Indirect ELISA of IGF1R [pYpY1135/1136] ABfinity[™] Recombinant Rabbit Monoclonal Antibody (Cat. no. 701067). Indirect ELISA was performed using various dilutions of IGF1R [pYpY1135/1136] ABfinity[™] Recombinant Rabbit Monoclonal Antibody (Cat. no. 701067) to detect phospho IGF1R [pYpY1135/1136] peptide coated onto the plate. A non-linear regression analysis was performed (4 PL) and LOD and LOQ for the antibody was determined.

Explanation of symbols

Symbol	Description	Symbol	Description
	Catalogue Number		Batch code
	Research Use Only		<i>In vitro</i> diagnostic medical device
	Use by		Temperature limitation
	Manufacturer		European Community authorised representative
	Without, does not contain		With, contains
	Protect from light		Consult accompanying documents
	Directs the user to consult instructions for use (IFU), accompanying the product.		

Limited Use Label License: Research Use Only

The purchase of this product conveys to the purchaser the limited, non-transferable right to use the purchased amount of the product only to perform internal research for the sole benefit of the purchaser. No right to resell this product or any of its components is conveyed expressly, by implication, or by estoppel. This product is for internal research purposes only and is not for use in commercial applications of any kind, including, without limitation, quality control and commercial services such as reporting the results of purchaser's activities for a fee or other form of consideration. For information on obtaining additional rights, please contact outlicensing@lifetech.com or Out Licensing, Life Technologies, 5791 Van Allen Way, Carlsbad, California 92008.

©2011 Life Technologies Corporation. All rights reserved. The trademarks mentioned herein are the property of Life Technologies Corporation or their respective owners.

For support visit www.invitrogen.com/support or email techsupport@invitrogen.com

www.lifetechnologies.com

life
technologies[™]