

JNK1 ABfinity™ Recombinant Rabbit Monoclonal Antibody – Purified

Publication Part no. MAN0004974

Rev. Date: 21 August 2011

Catalog Number: 701048

Store at 2–8°C

Clonality: Monoclonal
Concentration: 0.5 mg/mL

Host/Class: Rabbit IgG
Reactivity: Human c-Jun N-terminal kinase 1

Quantity: 100 µg
Volume: 200 µL

Predicted Reactivity: Human

Product Description

C-Jun N-terminal Kinase (JNK) is also known as mitogen-activated protein kinase (MAPK8), and belongs to the mitogen-activated protein kinase (MAPK) superfamily. The MAPK family of stress-activated protein kinases includes JNK, ERK, and p38 MAP kinase. MAPKs are Serine-threonine protein kinases that are activated in response to a variety of extracellular stimuli and mediate signal transduction from the cell surface to the nucleus. JNK is involved in a wide variety of cellular processes such as proliferation, differentiation, transcription regulation, and development. JNK and p38 MAPK pathways are activated by stress and inflammatory signals. JNK is expressed as ten different isoforms due to differential mRNA splicing. The predominant forms are JNK1 and JNK2.

Product Specifications

Immunogen: Recombinant protein corresponding to amino acids 17–126 of Human c-Jun N-terminal kinase 1

Alternate Names: MAPK8, SAPK1

Apparent MW: ~48 kDa

Gene ID: 5599

Protein Accession No.: P45983

Sequence Identity: Human

Sequence Homology: Mouse

Clone/PAD: 2H15L8

Lot: See product label

Product Applications

Application	Species	Test Material	Concentration
Western blotting	Human	HEK, Jurkat and K562 cells	1–3 µg/mL
Indirect ELISA	Human	Recombinant protein	1.5x10 ⁻⁴ to 3 µg/mL

Storage and Handling

Store the antibody at 2–8°C for up to 1 month, or –20°C for long storage. Avoid repeated freezing and thawing.

Stability

Expires one year from date of receipt when stored as instructed.

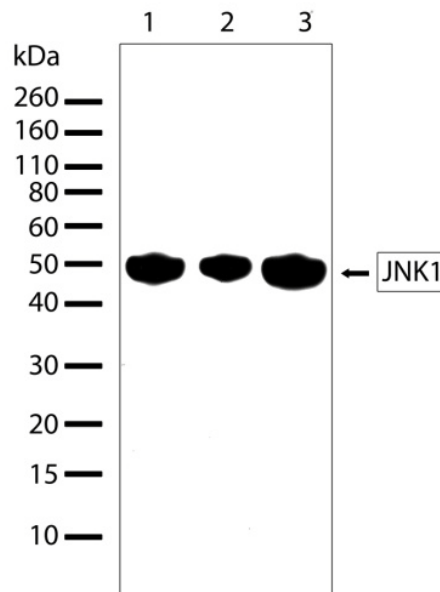


Figure 1 Western blot analysis of JNK1 ABfinity™ Recombinant Rabbit Monoclonal Antibody (Cat. no. 701048). Western blot analysis was performed on whole cell extracts of HEK293 (lane 1), Jurkat (lane 2) and K562 (lane 3) cell lines. Endogenous JNK1 protein at ~50 kDa was detected using JNK1 ABfinity™ Recombinant Rabbit Monoclonal Antibody at a concentration of 2.5 µg/mL.

For research use only. Not for human or animal therapeutic or diagnostic use.

Manufacturing Site • 7335 Executive Way • Frederick • MD 21704 • E-mail: techsupport@invitrogen.com

Storage Buffer

Phosphate buffered saline (PBS) with 0.09% sodium azide.

Safety Data Sheets (SDS)

Safety Data Sheets (SDSs) are available at www.invitrogen.com/sds.

Certificate of Analysis

The Certificate of Analysis provides detailed quality control and product qualification information for each product. Certificates of Analysis are available on our website. Go to www.invitrogen.com/support and search for the Certificate of Analysis by product lot number, which is printed on the box.

Related Products

Product Name	Quantity	Catalog No.
iBlot® Dry Blotting System	1 unit	IB1001
WesternBreeze™ Chromogenic Kit Anti-Rabbit	1 kit	WB7105
WesternBreeze™ Chemiluminescent Kit, Anti-Rabbit	1 kit	WB7106
Goat anti-mouse (H+L), HRP conj.	1 mg	G21040
Goat anti-rabbit (H+L), HRP conj.	1 mg	G21234
Goat anti-mouse (H+L), AP conj.	1 mg	G21060
Goat anti-rabbit (H+L), AP conj.	1 mg	G21079
Nitrocellulose, 0.2 µm	20/pack	LC2000

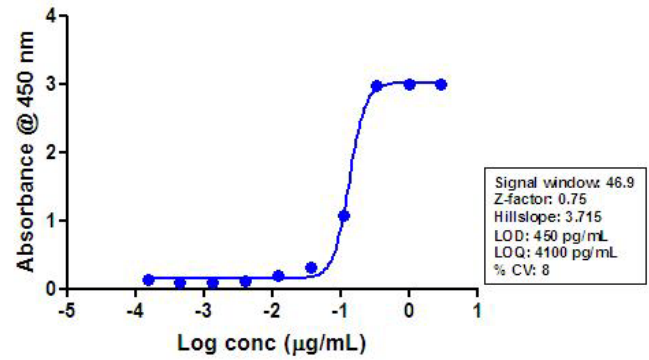


Figure 2 Indirect ELISA of JNK1 ABfinity™ Recombinant Rabbit Monoclonal Antibody (Cat. no. 701048). Indirect ELISA was performed using various dilutions of JNK1 ABfinity™ Recombinant Rabbit Monoclonal Antibody (Cat. no. 701048) to detect recombinant JNK1 protein coated onto the plate. A non-linear regression analysis was performed (4 PL) and LOD and LOQ for the antibody was determined.

Explanation of symbols

Symbol	Description	Symbol	Description
	Catalogue Number		Batch code
	Research Use Only		In vitro diagnostic medical device
	Use by		Temperature limitation
	Manufacturer		European Community authorised representative
	Without, does not contain		With, contains
	Protect from light		Consult accompanying documents
	Directs the user to consult instructions for use (IFU), accompanying the product.		

Limited Use Label License: Research Use Only

The purchase of this product conveys to the purchaser the limited, non-transferable right to use the purchased amount of the product only to perform internal research for the sole benefit of the purchaser. No right to resell this product or any of its components is conveyed expressly, by implication, or by estoppel. This product is for internal research purposes only and is not for use in commercial applications of any kind, including, without limitation, quality control and commercial services such as reporting the results of purchaser's activities for a fee or other form of consideration. For information on obtaining additional rights, please contact outlicensing@lifetech.com or Out Licensing, Life Technologies, 5791 Van Allen Way, Carlsbad, California 92008.

©2011 Life Technologies Corporation. All rights reserved. The trademarks mentioned herein are the property of Life Technologies Corporation or their respective owners.

For support visit www.invitrogen.com/support or email techsupport@invitrogen.com

www.lifetechnologies.com

life technologies™