

## IL-22 (Hu) ABfinity™ Recombinant Rabbit Monoclonal Antibody - Purified

MAN0004400

Rev. Date: 21 May 2011

Catalog Number: 701031

Store at 2–8°C

**Clonality:** Monoclonal  
**Concentration:** 0.5 mg/mL  
**Quantity:** 100 µg  
**Volume:** 200 µL

**Host/Class:** Rabbit IgG  
**Reactivity:** Human IL22  
**Predicted Reactivity:** Human

### Product Description

IL-22 (also known as Interleukin-22) is a member of the IL-10 family of regulatory cytokines that are primarily produced by terminally differentiated T-helper 17 (TH17) cells. IL-22 is highly expressed during chronic inflammation, and has been found to activate intracellular kinases and transcription factors. IL-22 is critical for host defense against infections of extracellular pathogens, and promotes wound-healing responses. In humans, the gene is located on the q arm of chromosome 12.

### Product Specifications

**Immunogen:** Recombinant protein corresponding to amino acids 92–179 of human IL-22  
**Alternate Names:** IL-TIF, zcyto18  
**Apparent MW:** ~17 kDa  
**Gene ID:** 50616  
**Protein Accession No.:** Q9GZX6  
**Sequence Identity:** Human  
**Clone/PAD:** 11H16L16  
**Lot:** See product label

### Product Applications

Application	Species	Test Material	Concentration
Western Blotting	Human	Recombinant Hu IL-22	4–5 µg/mL
ELISA	Human	Recombinant Protein	1.5x10 <sup>-4</sup> to 3 µg/mL

### Storage and Handling

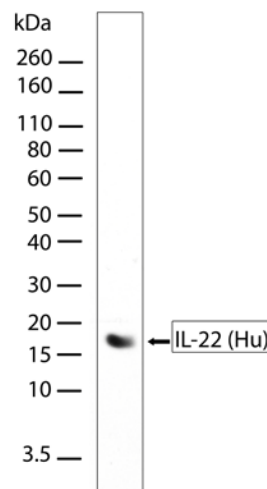
Store the antibody at 2–8°C for up to 1 month. Store at –20°C for long term storage. Avoid repeated freezing and thawing.

### Stability

Expires one year from date of receipt when stored as instructed.

### Storage Buffer

Phosphate buffered saline (PBS) with 0.09% sodium azide.



**Figure 1** Western Blot analysis of IL-22 (Hu) ABfinity™ Recombinant Rabbit Monoclonal Antibody (Cat. no. 701031). Active Recombinant Human IL-22 (1 µg) was run on SDS-PAGE, and transferred onto nitrocellulose. The blot was blocked, and incubated with IL-22 (Hu) ABfinity™ Recombinant Rabbit Monoclonal Antibody at 5 µg/mL, overnight at 4°C. HRP conjugated Goat Anti-Rabbit secondary antibody was used at a 1:2000 dilution, and the blot was developed by chemiluminescence (ECL). A band corresponding to IL-22 at ~17 kDa was detected.

**For research use only. Not for human or animal therapeutic or diagnostic use.**

Manufacturing Site • 7335 Executive Way • Frederick • MD 21704 • E-mail: [techsupport@invitrogen.com](mailto:techsupport@invitrogen.com)

## Safety Data Sheets (SDS)

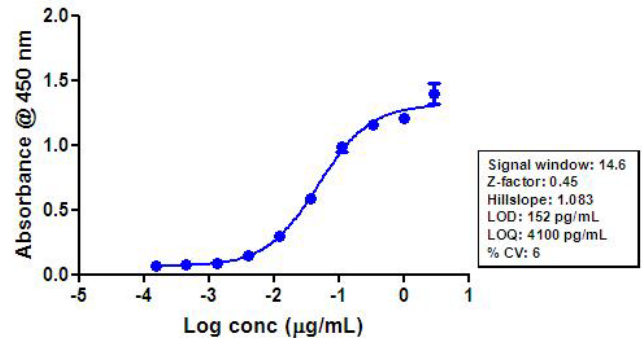
Safety Data Sheets (SDSs) are available at [www.invitrogen.com/sds](http://www.invitrogen.com/sds).

## Certificate of Analysis

The Certificate of Analysis provides detailed quality control and product qualification information for each product. Certificates of Analysis are available on our website. Go to [www.invitrogen.com/support](http://www.invitrogen.com/support) and search for the Certificate of Analysis by product lot number, which is printed on the box.

## Related Products

Product Name	Quantity	Catalog No.
iBlot® Dry Blotting System	1 unit	IB1001
WesternBreeze® Chromogenic Kit Anti-Rabbit	1 kit	WB7105
WesternBreeze® Chemiluminescent Kit, Anti-Rabbit	1 kit	WB7106
Goat anti-mouse (H+L), HRP conj.	1 mg	G21040
Goat anti-rabbit (H+L), HRP conj.	1 mg	G21234
Goat anti-mouse (H+L), AP conj.	1 mg	G21060
Goat anti-rabbit (H+L), AP conj.	1 mg	G21079
Nitrocellulose, 0.2 µm	20/pack	LC2000



**Figure 2** Indirect ELISA of IL-22 (Hu) ABfinity™ Recombinant Rabbit Monoclonal Antibody (Cat. no. 701031). Indirect ELISA was performed using IL-22 (Hu) ABfinity™ Recombinant Rabbit Monoclonal Antibody (0.5 µg/mL) to detect recombinant IL-22 (Hu) protein (1.5x10<sup>-4</sup> to 3 µg/mL). HRP conjugated Goat Anti-Rabbit secondary antibody was used at a 1:5000 dilution, and developed using TMB (Cat. no. SB01) as substrate.

### Explanation of symbols

Symbol	Description	Symbol	Description
	Catalogue Number		Batch code
	Research Use Only		<i>In vitro</i> diagnostic medical device
	Use by		Temperature limitation
	Manufacturer		European Community authorised representative
	Without, does not contain		With, contains
	Protect from light		Consult accompanying documents
	Directs the user to consult instructions for use (IFU), accompanying the product.		

## Limited Use Label License: Research Use Only

The purchase of this product conveys to the purchaser the limited, non-transferable right to use the purchased amount of the product only to perform internal research for the sole benefit of the purchaser. No right to resell this product or any of its components is conveyed expressly, by implication, or by estoppel. This product is for internal research purposes only and is not for use in commercial applications of any kind, including, without limitation, quality control and commercial services such as reporting the results of purchaser's activities for a fee or other form of consideration. For information on obtaining additional rights, please contact [outlicensing@lifetech.com](mailto:outlicensing@lifetech.com) or Out Licensing, Life Technologies, 5791 Van Allen Way, Carlsbad, California 92008.

©2011 Life Technologies Corporation. All rights reserved. The trademarks mentioned herein are the property of Life Technologies Corporation or their respective owners.

For support visit [www.invitrogen.com/support](http://www.invitrogen.com/support) or email [techsupport@invitrogen.com](mailto:techsupport@invitrogen.com)

**life**  
technologies™

[www.lifetechnologies.com](http://www.lifetechnologies.com)