

# IL-6 (Hu) ABfinity™ Recombinant Rabbit Monoclonal Antibody - Purified



Catalog no. 701028

(See product label for lot information)

**Clone/PAD:** 4H16L21  
**Isotype:** IgG  
**Gene ID:** 3569  
**Protein Acc. no.:** P05231  
**Qty:** 100 µg  
**Volume:** 200 µL  
**Concentration:** 0.5 mg/mL

## Formulation

PBS + 0.09% sodium azide

## Application

For use in Western Blotting

## Reactivity

This antibody is specific for human IL6

## Immunogen

Protein corresponding to amino acids 30-212 of human IL-6

## Sequence Identity

Human

## Storage

2-8°C for up to 1 month, -20°C for long term storage. Avoid repeated freezing and thawing.

## Expiration Date

Expires one year from date of receipt when stored as instructed.

## Background

IL-6 also known as Interleukin 6; is a cytokine secreted by T cells and macrophages, has shown to exhibit activity in response to tissue damage and infection (1). They have also been found to be involved in various other activities like development of blood, cancer, embryonic development, and regulation of the immune system (1, 2). IL6 is included in a family of other cytokines which include ciliary neurotrophic factor, cardiotrophin-1, leukemia inhibitory factor and interleukin 11. IL-6 can bring about differentiation through a receptor system which requires a specific receptor and a signaling subunit, gp130 (3).

## References

- 1) Peter C Heinrich, Iris Behrmann, Serge Haan, Heike M Hermanns, Gerhard Müller-Newen, and Fred Schaper. Principles of interleukin (IL)-6-type cytokine signalling and its regulation.2003. Journal of Biochemistry. 15; 374(Pt 1): 1-20
- 2) Tadimitsu Kishimoto. IL-6: from its discovery to clinical applications. 2010. International Immunology, Vol. 22, No. 5, pp. 347-352
- 3) Simpson RJ, Hammacher A, Smith DK, Matthews JM, Ward LD. Interleukin-6: structure-function relationships.1997. Protein Science. 6(5):929-55

## Applications:

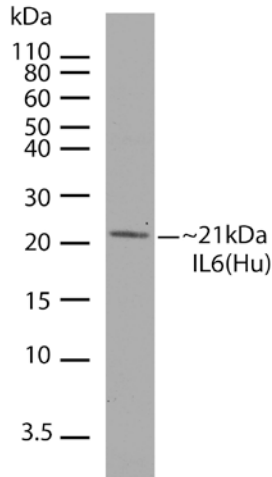
	Species	Test Material	Concentration
Western Blotting	Human	Rec Hu IL-6	0.1 - 1 µg/ml

**For Research Use Only. CAUTION: Not for human or animal therapeutic or diagnostic use.**

[www.invitrogen.com](http://www.invitrogen.com)

Invitrogen Corporation • 7335 Executive Way • Frederick • MD 21704 • Tel: 800.955.6288 • E-mail: [techsupport@invitrogen.com](mailto:techsupport@invitrogen.com)

This antibody is manufactured under a licensed process covered by Patent # 5, 599, 681.



**Western Blot of IL6(Hu) labeled with IL6(Hu) Rabbit Recombinant Monoclonal Antibody (Cat. No. 701028).**

IL6(Hu) Rabbit Recombinant Monoclonal Antibody (0.1µg/ml) was used to detect IL6(Hu) in Rec Hu IL6 (1ng/lane). The western was performed using the WesternBreeze® kit with NBT/BCIP as the substrate (Cat. No.WB7105).

**Explanation of symbols**

Symbol	Description	Symbol	Description
	Catalogue Number		Batch code
	Research Use Only		<i>In vitro</i> diagnostic medical device
	Use by		Temperature limitation
	Manufacturer		European Community authorised representative
	Without, does not contain		With, contains
	Protect from light		Consult accompanying documents
	Directs the user to consult instructions for use (IFU), accompanying the product.		

**For Research Use Only. CAUTION: Not for human or animal therapeutic or diagnostic use.**

[www.invitrogen.com](http://www.invitrogen.com)

Invitrogen Corporation • 7335 Executive Way • Frederick • MD 21704 • Tel: 800.955.6288 • E-mail: [techsupport@invitrogen.com](mailto:techsupport@invitrogen.com)

This antibody is manufactured under a licensed process covered by Patent # 5, 599, 681.