

LC3B/MAP1LC3B ABfinity™ Recombinant Rabbit Monoclonal Antibody - Purified



Catalog no. 700712

(See product label for lot information)

Clone/PAD: 2H30L32
Isotype: IgG
Gene ID: 81631
Protein Acc. no.: Q9GZQ8
Qty: 100 µg
Volume: 200 µL
Concentration: 0.5 mg/mL

Formulation

PBS + 0.09% sodium azide

Application

For use in Western Blotting

Reactivity

This antibody is specific for human LC3B

Immunogen

Recombinant human LC3B protein corresponding to amino acids 2–120

Sequence Identity

Human

Sequence Homology

Mouse

Expected Reactivity

Based on sequence identity and similarity, reactivity to Mouse is predicted.

Storage

2–8°C for up to 1 month, –20°C for long term storage. Avoid repeated freezing and thawing.

Expiration Date

Expires one year from date of receipt when stored as instructed.

Background

LC3B (Autophagy Marker Light Chain 3B), in humans, is encoded by the gene MAP1LC3B (Microtubule-associated proteins 1A/1B light chain 3B) (1,2). The product of this gene is associated with microtubule assembly and important in neurogenesis. Recent studies indicate that LC3B plays a vital role in autophagy, a process that involves the bulk degradation of cytoplasmic component (3,4). Three human LC3 isoforms (LC3A, LC3B, and LC3C) undergo post-translational modifications during autophagy (5).

References

1. Mann SS, Hammarback JA (1994). Molecular characterization of light chain 3. A microtubule binding subunit of MAP1A and MAP1B. *Journal Of Biological Chemistry*.11492-7.
2. Tanida I, Ueno T, Kominami E (2004). Human light chain 3/MAP1LC3B is cleaved at its carboxyl-terminal Met121 to expose Gly120 for lipidation and targeting to autophagosomal membranes. *Journal Of Biological Chemistry*, 47704-10.
3. Behrends C, Sowa ME, Gygi SP, Harper JW (2010). Network organization of the human autophagy system. *Nature*, 68-76.
4. Tanida I, Ueno T, Kominami E (2005). LC3 conjugation system in mammalian autophagy. *International Journal Of Biochemistry and Cell Biology*, 2503-18.
5. He H, Dang Y, Dai F, Guo Z, Wu J, She X, Pei Y, Chen Y, Ling W, Wu C, Zhao S, Liu JO, Yu L. (2003). Post-translational modifications of three members of the human MAP1LC3 family and detection of a novel type of modification for MAP1LC3B. *The Journal Of Biological chemistry*, 29278-87.

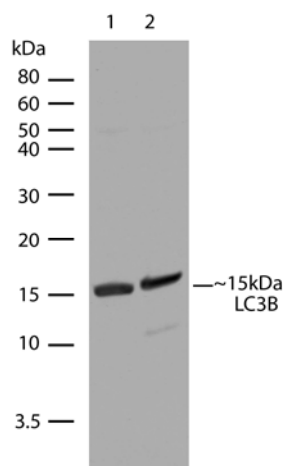
Applications:

	Species	Test Material	Concentration
Western Blotting	Rat	Brain	1–5 µg/mL

For Research Use Only. CAUTION: Not for human or animal therapeutic or diagnostic use.

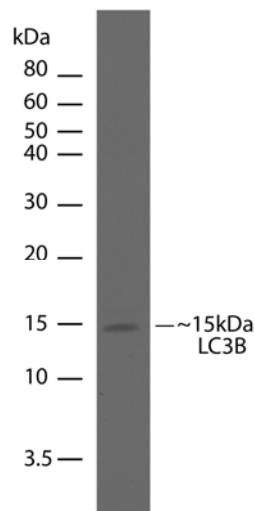
www.invitrogen.com

Invitrogen Corporation • 7335 Executive Way • Frederick • MD 21704 • Tel: 800.955.6288 • E-mail: techsupport@invitrogen.com



Western Blot of LC3B labeled with LC3B Rabbit Recombinant Monoclonal Antibody (Cat. no. 700712).

LC3B Rabbit Recombinant Monoclonal Antibody (2.5 µg/mL) was used to detect LC3B in Lane 1: Rat Brain Cell Lysate (30 µg/lane); Lane 2: Mouse Brain Cell Lysate (30 µg/lane). The western was performed using the WesternBreeze® kit with NBT/BCIP as the substrate (Cat. no. WB7105).



Western Blot of LC3B labeled with LC3B Rabbit Recombinant Monoclonal Antibody (Cat. no. 700712).

LC3B Rabbit Recombinant Monoclonal Antibody (2.5 µg/mL) was used to detect LC3B in HeLa treated with Chloroquine (50 µM, 16 hrs) Cell Lysate (30 µg/lane). The western was performed using the WesternBreeze® kit with NBT/BCIP as the substrate (Cat. no. WB7105).

Explanation of symbols

Symbol	Description	Symbol	Description
	Catalogue Number		Batch code
	Research Use Only		<i>In vitro</i> diagnostic medical device
	Use by		Temperature limitation
	Manufacturer		European Community authorised representative
	Without, does not contain		With, contains
	Protect from light		Consult accompanying documents
	Directs the user to consult instructions for use (IFU), accompanying the product.		

Limited Use Label License: Research Use Only

The purchase of this product conveys to the purchaser the limited, non-transferable right to use the purchased amount of the product only to perform internal research for the sole benefit of the purchaser. No right to resell this product or any of its components is conveyed expressly, by implication, or by estoppel. This product is for internal research purposes only and is not for use in commercial applications of any kind, including, without limitation, quality control and commercial services such as reporting the results of purchaser's activities for a fee or other form of consideration. For information on obtaining additional rights, please contact outlicensing@lifetech.com or Out Licensing, Life Technologies, 5791 Van Allen Way, Carlsbad, California 92008.

©2011 Life Technologies Corporation. All rights reserved. The trademarks mentioned herein are the property of Life Technologies Corporation or their respective owners.

For Research Use Only. CAUTION: Not for human or animal therapeutic or diagnostic use.

www.invitrogen.com

Invitrogen Corporation • 7335 Executive Way • Frederick • MD 21704 • Tel: 800.955.6288 • E-mail: techsupport@invitrogen.com