

## Pyk2 [pY402] ABfinity™ Recombinant Rabbit Monoclonal Antibody - Purified

MAN0004399

Rev. Date: 21 May 2011

Catalog Number: 700632

Store at 2–8°C

**Clonality:** Monoclonal  
**Concentration:** 0.5 mg/mL  
**Quantity:** 100 µg  
**Volume:** 200 µL

**Host/Class:** Rabbit IgG  
**Reactivity:** Human PYK2  
**Predicted Reactivity:** Human

### Product Description

Pyk2 (also known as Proline-rich tyrosine kinase 2), is expressed in the central nervous system and cells derived from hematopoietic lineages. The tyrosine residues of Pyk2 are rapidly phosphorylated in response to various stimuli that increase the intracellular calcium concentration. Pyk2 activation results in activation of the MAP kinase signaling pathway, and regulation of ion channels that impact various physiological processes, including cell growth, differentiation, metabolism, cell cycle regulation and cytoskeleton function.

### Product Specifications

**Immunogen:** Peptide with the sequence ESDI[pY]AEIPDETL corresponding to amino acids 398–410 of Pyk2

**Alternate Names:** FAK2, PYK2

**Apparent MW:** ~115 kDa

**Gene ID:** 2185

**Protein Accession No.:** Q14289

**Sequence Identity:** Human

**Sequence Homology:** Mouse

**Clone/PAD:** 17H4L19

**Lot:** See product label

### Product Applications

Application	Species	Test Material	Concentration
Western Blotting	Human	A431 cells	4–5 µg/mL
ELISA	Human	Phosphopeptide	1.5x10 <sup>-4</sup> to 3 µg/mL

### Storage and Handling

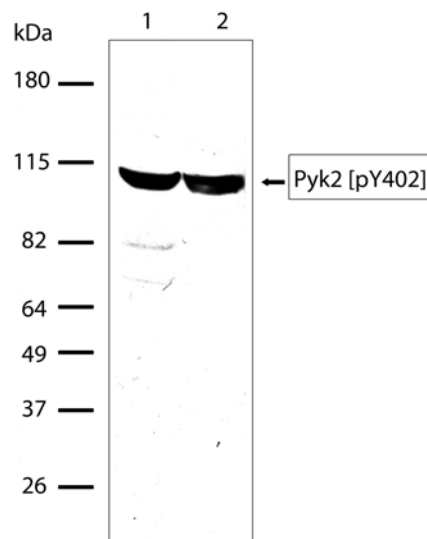
Store the antibody at 2–8°C for up to 1 month. Store at –20°C for long term storage. Avoid repeated freezing and thawing.

### Stability

Expires one year from date of receipt when stored as instructed.

### Storage Buffer

Phosphate buffered saline (PBS) with 0.09% sodium azide.



**Figure 1** Western Blot analysis of Pyk2 [pY402] ABfinity™ Recombinant Rabbit Monoclonal Antibody (Cat. no. 700632). Whole cell extract (60 µg per lane) from A431 cells (Lane 1) and Raji cells (Lane 2) were run on SDS-PAGE, and transferred onto nitrocellulose. The blot was blocked, and incubated with Pyk2 [pY402] ABfinity™ Recombinant Rabbit Monoclonal Antibody at 5 µg/mL, overnight at 4°C. HRP conjugated Goat Anti-Rabbit secondary antibody was used at a 1:5000 dilution, and developed by chemiluminescence (ECL). A band corresponding to Pyk2 at ~115 kDa was detected.

**For research use only. Not for human or animal therapeutic or diagnostic use.**

Manufacturing Site • 7335 Executive Way • Frederick • MD 21704 • E-mail: [techsupport@invitrogen.com](mailto:techsupport@invitrogen.com)

## Safety Data Sheets (SDS)

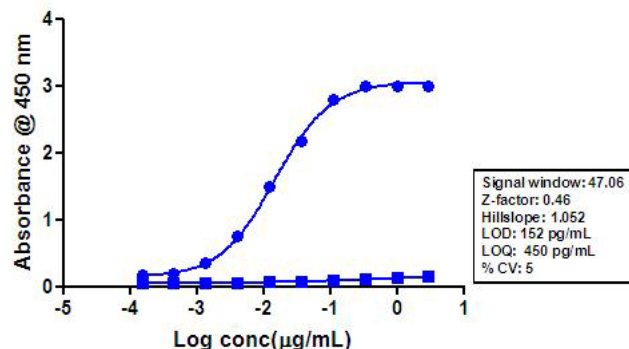
Safety Data Sheets (SDSs) are available at [www.invitrogen.com/sds](http://www.invitrogen.com/sds).

## Certificate of Analysis

The Certificate of Analysis provides detailed quality control and product qualification information for each product. Certificates of Analysis are available on our website. Go to [www.invitrogen.com/support](http://www.invitrogen.com/support) and search for the Certificate of Analysis by product lot number, which is printed on the box.

## Related Products

Product Name	Quantity	Catalog No.
iBlot® Dry Blotting System	1 unit	IB1001
WesternBreeze® Chromogenic Kit Anti-Rabbit	1 kit	WB7105
WesternBreeze® Chemiluminescent Kit, Anti-Rabbit	1 kit	WB7106
Goat anti-mouse (H+L), HRP conj.	1 mg	G21040
Goat anti-rabbit (H+L), HRP conj.	1 mg	G21234
Goat anti-mouse (H+L), AP conj.	1 mg	G21060
Goat anti-rabbit (H+L), AP conj.	1 mg	G21079
Nitrocellulose, 0.2 µm	20/pack	LC2000



**Figure 2** Indirect ELISA of Pyk2 [pY402] ABfinity™ Recombinant Rabbit Monoclonal Antibody (Cat. no. 700632). Indirect ELISA was performed using Pyk2 [pY402] ABfinity™ Recombinant Rabbit Monoclonal Antibody to detect Pyk2 [Y402] phosphopeptide (100 ng/well), represented by --●--, and Pyk2 [Y402] non-phosphopeptide (100 ng/well) represented by --■--. HRP conjugated Goat Anti-Rabbit secondary antibody was used at a 1:5000 dilution, and developed using TMB (Cat. no. SB01) as substrate.

### Explanation of symbols

Symbol	Description	Symbol	Description
	Catalogue Number		Batch code
	Research Use Only		In vitro diagnostic medical device
	Use by		Temperature limitation
	Manufacturer		European Community authorised representative
	Without, does not contain		With, contains
	Protect from light		Consult accompanying documents
	Directs the user to consult instructions for use (IFU), accompanying the product.		

## Limited Use Label License: Research Use Only

The purchase of this product conveys to the purchaser the limited, non-transferable right to use the purchased amount of the product only to perform internal research for the sole benefit of the purchaser. No right to resell this product or any of its components is conveyed expressly, by implication, or by estoppel. This product is for internal research purposes only and is not for use in commercial applications of any kind, including, without limitation, quality control and commercial services such as reporting the results of purchaser's activities for a fee or other form of consideration. For information on obtaining additional rights, please contact [outlicensing@lifetech.com](mailto:outlicensing@lifetech.com) or Out Licensing, Life Technologies, 5791 Van Allen Way, Carlsbad, California 92008.

©2011 Life Technologies Corporation. All rights reserved. The trademarks mentioned herein are the property of Life Technologies Corporation or their respective owners.

For support visit [www.invitrogen.com/support](http://www.invitrogen.com/support) or email [techsupport@invitrogen.com](mailto:techsupport@invitrogen.com)

[www.lifetechnologies.com](http://www.lifetechnologies.com)

**life**  
technologies™