

# MDM2 ABfinity™ Recombinant Rabbit Monoclonal Antibody - Purified



Catalog no. 700555

(See product label for lot information)

**Clone/PAD:** 4H26L4  
**Isotype:** IgG  
**Gene ID:** 4193  
**Protein Acc. no.:** Q00987  
**Qty:** 100 µg  
**Volume:** 200 µl  
**Concentration:** 0.5 mg/mL

## Formulation

Phosphate buffered saline (PBS) with 0.09% sodium azide.

## Application

For use in Western Blotting and ELISA.

## Reactivity

This antibody is specific for human MDM2.

## Immunogen

Recombinant protein corresponding to amino acids 215-422 of human MDM2.

## Sequence Identity

Human

## Sequence Homology

Mouse

## Expected Reactivity

Based on sequence identity and similarity, reactivity to Human and Mouse are predicted.

## Storage

2-8°C for up to 1 month, -20°C for long term storage. Avoid repeated freezing and thawing.

## Expiration Date

Expires one year from date of receipt when stored as instructed.

## Background

MDM2 also known as “murine double minute 2”, is found to interact with p53; a tumor suppressor protein, and has been shown to negatively regulate its function (1). MDM2 binds and inhibits transactivation role played by p53 and overexpression of MDM2 can result in the inactivation of p53 and in turn decrease its tumor suppressor function. Another process by which MDM2 can inactivate p53 is by degrading p53 as the protein also possesses E3 ubiquitin ligase activity. MDM2 also plays various important roles in apoptosis and cell cycle (2). MDM2 is located on chromosome 12 on the q arm (3).

## References

- 1) James J. Manfredi. The Mdm2-p53 relationship evolves: Mdm2 swings both ways as an oncogene and a tumor suppressor. 2010. Genes Dev. 24:1580-1589
- 2) Guillermina Lozano, and Roberto Montes de Oca Lunab. 1998. MDM2 function. Biochimica et Biophysica Acta (BBA) - Reviews on Cancer. M55-M59
- 3) Joshua Weaver, Erinn Downs-Kelly, John R Goldblum, Sondra Turner, Sucheta Kulkarni, Raymond R Tubbs, Brian P Rubin and Marek Skacel. 2008. Fluorescence in situ hybridization for MDM2 gene amplification as a diagnostic tool in lipomatous neoplasms. Modern Pathology. 943-949

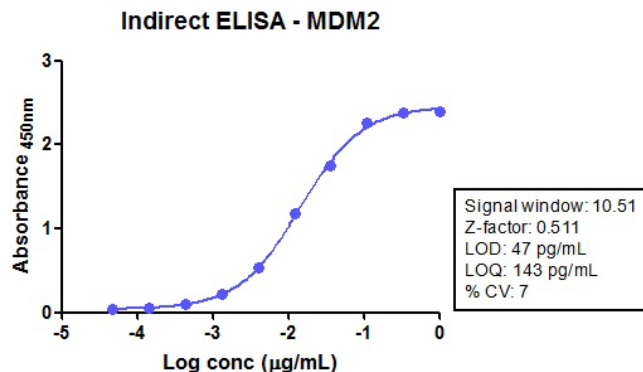
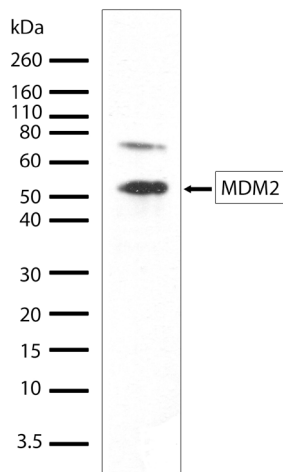
## Applications:

	Species	Test Material	Concentration
Western Blotting	Human	MCF7	0.1 - 1 µg/ml
Indirect ELISA	Human	Recombinant Protein	4.7x10 <sup>-5</sup> - 1 µg/ml

**For Research Use Only. CAUTION: Not for human or animal therapeutic or diagnostic use.**

[www.invitrogen.com](http://www.invitrogen.com)

Invitrogen Corporation • 7335 Executive Way • Frederick • MD 21704 • Tel: 800.955.6288 • E-mail: [techsupport@invitrogen.com](mailto:techsupport@invitrogen.com)



**Western Blot of MDM2 labeled with MDM2 Rabbit Recombinant Monoclonal Antibody (Cat. No.700555).**

MDM2 Rabbit Recombinant Monoclonal Antibody (0.1 µg/mL) was used to detect MDM2 in MCF7 Cell Lysate (30µg/lane). The western was performed using 5% milk in TBST as Blocking agent. GAR-HRP - 1:5,000 (Cat No. 656120) used as Secondary and developed using ECL technique.

**Indirect ELISA of MDM2 Rabbit Recombinant Monoclonal Antibody (Cat. No.700555).**

Indirect ELISA was done using MDM2 Rabbit Recombinant Monoclonal Antibody to detect the recombinant protein (100ng/well), using TMB (Cat. No. SB01) as substrate.

**Explanation of symbols**

Symbol	Description	Symbol	Description
	Catalogue Number		Batch code
	Research Use Only		<i>In vitro</i> diagnostic medical device
	Use by		Temperature limitation
	Manufacturer		European Community authorised representative
	Without, does not contain		With, contains
	Protect from light		Consult accompanying documents
	Directs the user to consult instructions for use (IFU), accompanying the product.		

**Limited Use Label License No. 358: Research Use Only**

The purchase of this product conveys to the purchaser the limited, non-transferable right to use the purchased amount of the product only to perform internal research for the sole benefit of the purchaser. No right to resell this product or any of its components is conveyed expressly, by implication, or by estoppel. This product is for internal research purposes only and is not for use in commercial applications of any kind, including, without limitation, quality control and commercial services such as reporting the results of purchaser's activities for a fee or other form of consideration. For information on obtaining additional rights, please contact outlicensing@lifetech.com or Out Licensing, Life Technologies, 5791 Van Allen Way, Carlsbad, California 92008.

©2011 Life Technologies Corporation. All rights reserved. The trademarks mentioned herein are the property of Life Technologies Corporation or their respective owners.

**For Research Use Only. CAUTION: Not for human or animal therapeutic or diagnostic use.**

[www.invitrogen.com](http://www.invitrogen.com)

Invitrogen Corporation • 7335 Executive Way • Frederick • MD 21704 • Tel: 800.955.6288 • E-mail: [techsupport@invitrogen.com](mailto:techsupport@invitrogen.com)