

# CXCR5 ABfinity™ Recombinant Rabbit Monoclonal Antibody - Purified



Catalog no. 700995

(See product label for lot information)

**Clone/PAD:** 6H35L3  
**Isotype:** IgG  
**Gene ID:** 643  
**Protein Acc. no.:** P32302  
**Qty:** 100 µg  
**Volume:** 200 µl  
**Concentration:** 0.5 mg/mL

## Formulation

PBS + 0.09% sodium azide

## Validation

See [www.invitrogen.com/antibodies](http://www.invitrogen.com/antibodies) for protocols

Validated for use in WB

## Immunogen

Recombinant Protein

## Sequence Identity

Human

## Sequence Homology

Bovine, dog, rabbit, mouse and rat,

## Expected Reactivity

Based on sequence identity and similarity, reactivity to human, bovine, dog, rabbit, mouse and rat is expected.

## Storage

2-8°C for up to 1 month, -20°C for long term storage. Avoid repeated freezing and thawing.

## Expiration Date

Expires one year from date of receipt when stored as instructed.

## Background

CXCR5 (C-X-Chemokine Receptor Type 5) also known as Burkitt lymphoma receptor 1 (BLR1) belongs to the CXC chemokine receptor family. It is a G protein-coupled seven transmembrane receptor for chemokine BLC (1). CXCR5 gene is specifically expressed in Burkitt's lymphoma and lymphatic tissues, such as follicles in lymph nodes, as well as in spleen (2). Studies of the gene suggest that it plays an essential role in B cell migration (3, 4). CXCR5 has also recently been designated CD185.

## References

1. Baggiolini, M., Dewald, B., Moser, B. (1997). Human chemokines: an update. Annual Review Of Immunology, 15:675-705.
2. Dobner, T., Wolf, I., Emrich, T., Lipp, M. (2005). Differentiation-specific expression of a novel G protein-coupled receptor from Burkitt's lymphoma. European Journal of Immunology, Vol. 22 Issue 11, 2795 – 2799.
3. Förster, R., Mattis, A.E., Kremmer, E., Wolf, E., Brem, G. and Lipp, M. (1996). A Putative Chemokine Receptor, BLR1, Directs B Cell Migration to Defined Lymphoid Organs and Specific Anatomic Compartments of the Spleen. Cell, Vol. 87, 1037–1047.
4. Legler, D.F., Loetscher, M., Roos, R.S., Clark-Lewis, I., Baggiolini, M. and Moser, B. (1998). B Cell-attracting Chemokine 1, a Human CXC Chemokine Expressed in Lymphoid Tissues, Selectively Attracts B Lymphocytes via BLR1/CXCR5. Journal Of Experimental Medicine, 187(4): 655–660.

Following applications had been tested during development. To make sure the consistency and reliability in the future lots, each lot is tested with antigen ELISA for specificity and potency. Each lot is also tested with SDS-PAGE, to ensure high purity.

## Applications:

	Species	Test Material	Concentration
Western Blotting	Human	Raji	4-5 µg/ml

For research use only. CAUTION: Not for human or animal therapeutic or diagnostic use.

[www.invitrogen.com](http://www.invitrogen.com)

Invitrogen Corporation • 542 Flynn Rd • Camarillo • CA 93012 • Tel: 800.955.6288 • E-mail: [techsupport@invitrogen.com](mailto:techsupport@invitrogen.com)

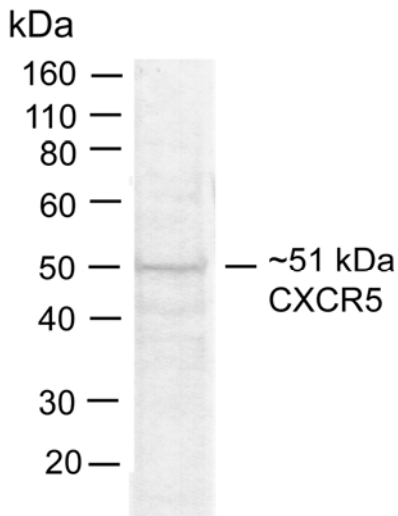
This antibody is manufactured under a licensed process covered by Patent # 5, 599, 681.

PI700995 (Rev 08/10) DCC-10-2035

Page 1 of 2

FORM-00089 (Rev 0.0)

**Important Licensing Information** - These products may be covered by one or more Limited Use Label Licenses (see the Invitrogen Catalog or our website, [www.invitrogen.com](http://www.invitrogen.com)). By use of these products you accept the terms and conditions of all applicable Limited Use Label Licenses. Unless otherwise indicated, these products are for research use only and are not intended for human or animal diagnostic, therapeutic or commercial use.



**Western Blot of CXCR5 labeled with rabbit anti-CXCR5 (Cat. No. 700995).**

Rabbit anti-CXCR5 (5 µg/ml) was used to label CXCR5 in Raji cell lysate (30 µg) of lysate. The western was performed using the WesternBreeze® kit with NBT/BCIP as the substrate (Cat. No.WB7105).

**Explanation of symbols**

Symbol	Description	Symbol	Description
	Catalogue Number		Batch code
	Research Use Only		<i>In vitro</i> diagnostic medical device
	Use by		Temperature limitation
	Manufacturer		European Community authorised representative
	Without, does not contain		With, contains
	Protect from light		Consult accompanying documents
	Directs the user to consult instructions for use (IFU), accompanying the product.		

**For research use only. CAUTION: Not for human or animal therapeutic or diagnostic use.**

[www.invitrogen.com](http://www.invitrogen.com)

Invitrogen Corporation • 542 Flynn Rd • Camarillo • CA 93012 • Tel: 800.955.6288 • E-mail: [techsupport@invitrogen.com](mailto:techsupport@invitrogen.com)

This antibody is manufactured under a licensed process covered by Patent # 5, 599, 681.