

# GST ABfinity™ Recombinant Rabbit Monoclonal Antibody – Purified



Catalog no. 700775

(See product label for lot information)

**Clone/PAD:** 1H14L28  
**Isotype:** IgG  
**Protein Acc. no.:** P08515  
**Qty:** 100 µg  
**Volume:** 200 µl  
**Concentration:** 0.5 mg/mL

## Formulation

PBS + 0.09% sodium azide

## Application

For use in Western Blotting

## Immunogen

Recombinant protein

## Immunogen sequence

Amino acids 1-220

## Reactivity

*Schistosoma japonicum* (Blood fluke)

## Expected Reactivity

Based on sequence identity and similarity, reactivity to *Schistosoma japonicum* (Blood fluke) is expected.

## Storage

2-8°C for up to 1 month, -20°C for long term storage. Avoid repeated freezing and thawing.

## Expiration Date

Expires one year from date of receipt when stored as instructed.

## Background

GST (Glutathione S-transferase) is a 26kDa protein, present in eukaryotes and in prokaryotes; where they catalyze a variety of reactions. Glutathione S-transferase is used to create the GST gene fusion system. This GST-fusion protein can then be purified from cells via its high affinity for glutathione. Fusion Proteins offer an important biological assay for direct protein-to-protein interactions. The GST gene fusion system has been introduced into numerous expression vectors (1-3).

## References

- (1) Guan KL, Dixon JE. (1991). Eukaryotic proteins expressed in *Escherichia coli*: an improved thrombin cleavage and purification procedure of fusion proteins with glutathione S-transferase. *Analytical Biochemistry*. 262-7.
- (2) Davies AH, Jowett JB, Jones IM. (1993). Recombinant baculovirus vectors expressing glutathione-S-transferase fusion proteins. *Biotechnology (N Y)*. 1933-6.
- (3) Mannervik B, Alin P, Guthenberg C, Jansson H, Tahir MK, Warholm M, Jörnvall H. (1985). Identification of three classes of cytosolic glutathione transferase common to several mammalian species: correlation between structural data and enzymatic properties. *Proceedings Of The National Academy Of Science U S A*. 7202-6.

Following applications had been tested during development. To make sure the consistency and reliability in the future lots, each lot is tested with antigen ELISA for specificity and potency. Each lot is also tested with SDS-PAGE, to ensure high purity.

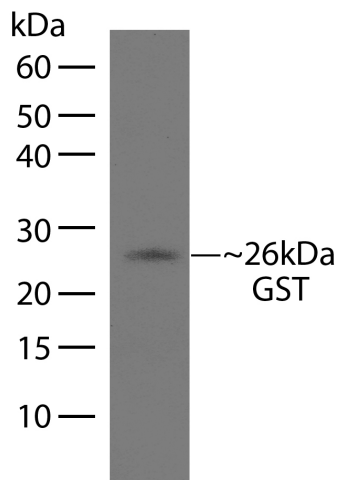
## Applications:

	Species	Test Material	Concentration
Western Blotting	N/A	Rec GST	4-5 µg/ml

**For Research Use Only. Not for human or animal therapeutic or diagnostic use.**

[www.invitrogen.com](http://www.invitrogen.com)

Invitrogen Corporation • 7335 Executive Way • Frederick • MD 21704 • Tel: 800.955.6288 • E-mail: [techsupport@invitrogen.com](mailto:techsupport@invitrogen.com)



**Western Blot of GST labeled with GST Rabbit Recombinant Monoclonal Antibody (Cat. No. 700775).**

GST Rabbit Recombinant Monoclonal Antibody (5 µg/ml) was used to label GST in Rec GST (5 ng). The western was performed using the WesternBreeze® kit with NBT/BCIP as the substrate (Cat. No. WB7105).

**Explanation of symbols**

Symbol	Description	Symbol	Description
	Catalogue Number		Batch code
	Research Use Only		<i>In vitro</i> diagnostic medical device
	Use by		Temperature limitation
	Manufacturer		European Community authorised representative
	Without, does not contain		With, contains
	Protect from light		Consult accompanying documents
	Directs the user to consult instructions for use (IFU), accompanying the product.		

**For Research Use Only. Not for human or animal therapeutic or diagnostic use.**

[www.invitrogen.com](http://www.invitrogen.com)

Invitrogen Corporation • 7335 Executive Way • Frederick • MD 21704 • Tel: 800.955.6288 • E-mail: [techsupport@invitrogen.com](mailto:techsupport@invitrogen.com)