

MCP-1 ABfinity™ Recombinant Rabbit Monoclonal Antibody - Purified



Catalog no. 700489

(See product label for lot information)

Clone/PAD: 29H86L56
Isotype: IgG
Gene ID: CCL2
Protein Acc. no.: P13500
Qty: 100 µg
Volume: 200 µl
Concentration: 0.5 mg/mL

Formulation

PBS + 0.09% sodium azide

Validation

See www.invitrogen.com/antibodies for protocols

Validated for use in WB

Reactivity

Human

Immunogen

recombinant protein

Sequence Identity

Human

Sequence Homology

Rhesus monkey and swine

Expected Reactivity

Based on sequence identity and similarity, reactivity to human, rhesus monkey and swine is expected.

Storage

2-8°C for up to 1 month, -20°C for long term storage. Avoid repeated freezing and thawing.

Expiration Date

Expires one year from date of receipt when stored as instructed.

Background

Monocyte chemoattractant protein-1 (MCP-1) also known as CCL2 has predicted molecular weight of ~11-Da, however, may run at a higher molecular weight due to post translational modifications such as glycosylation. MCP-1 is a member of cytokine family and plays an important role in immunoregulation and inflammatory processes (1). MCP-1 is indicated in the etiology of several immune disorders including psoriasis, rheumatoid arthritis (2, 3). MCP-1 is also linked with tumor progression and related angiogenesis (4). MCP-1 displays selective chemotactic activity towards monocytes and basophils but not neutrophils or eosinophils. MCP-1 binds to chemokine receptors CCR2 and CCR4 (5).

References

1. Carr, M.W., Roth, S.J., Luther, E., Rose, S.S., and Springer, T.A. (1994). Monocyte chemoattractant protein 1 acts as a T-lymphocyte chemoattractant. Proceedings of the National Academy of Sciences of the United States of America 91, 3652-3656.
2. Gillitzer, R., Wolff, K., Tong, D., Muller, C., Yoshimura, T., Hartmann, A.A., Stingl, G., and Berger, R. (1993). MCP-1 mRNA expression in basal keratinocytes of psoriatic lesions. The Journal of investigative dermatology 101, 127-131.
3. Koch, A.E., Kunkel, S.L., Harlow, L.A., Johnson, B., Evanoff, H.L., Haines, G.K., Burdick, M.D., Pope, R.M., and Strieter, R.M. (1992). Enhanced production of monocyte chemoattractant protein-1 in rheumatoid arthritis. The Journal of clinical investigation 90, 772-779.
4. Salcedo, R., Ponce, M.L., Young, H.A., Wasserman, K., Ward, J.M., Kleinman, H.K., Oppenheim, J.J., and Murphy, W.J. (2000). Human endothelial cells express CCR2 and respond to MCP-1: direct role of MCP-1 in angiogenesis and tumor progression. Blood 96, 34-40.

Following applications had been tested during development. To make sure the consistency and reliability in the future lots, each lot is tested with antigen ELISA for specificity and potency. Each lot is also tested with SDS-PAGE, to ensure high purity.

Applications:

	Species	Test Material	Concentration
Western Blotting	Human	Recombinant human MCP-1	0.05-0.5 µg/ml

For research use only. CAUTION: Not for human or animal therapeutic or diagnostic use.

www.invitrogen.com

Invitrogen Corporation • 542 Flynn Rd • Camarillo • CA 93012 • Tel: 800.955.6288 • E-mail: techsupport@invitrogen.com

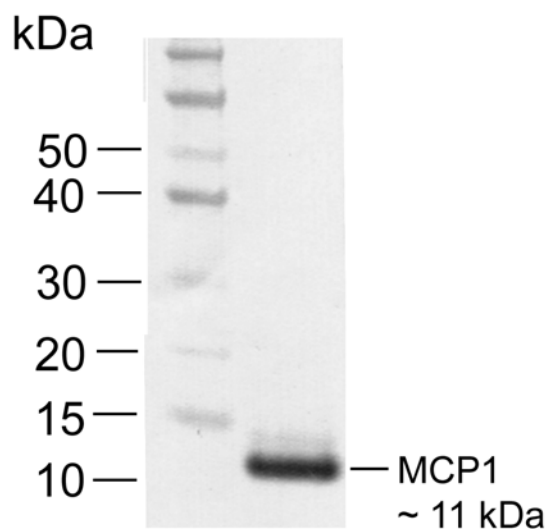
This antibody is manufactured under a licensed process covered by Patent # 5, 599, 681.

PI700489

Page 1 of 2

FORM-00089 (Rev. 0.0)

Important Licensing Information - These products may be covered by one or more Limited Use Label Licenses (see the Invitrogen Catalog or our website, www.invitrogen.com). By use of these products you accept the terms and conditions of all applicable Limited Use Label Licenses. Unless otherwise indicated, these products are for research use only and are not intended for human or animal diagnostic, therapeutic or commercial use.



Western Blot of recombinant MCP-1 labeled with rabbit anti-MCP-1 (Cat. No. 700489).

Rabbit anti-MCP-1 (0.1 µg/ml) was used to label recombinant human MCP-1 (100 ng/lane). The western was performed using the WesternBreeze® kit with NBT/BCIP as the substrate (Cat. No. WB7105).

Explanation of symbols

Symbol	Description	Symbol	Description
	Catalogue Number		Batch code
	Research Use Only		<i>In vitro</i> diagnostic medical device
	Use by		Temperature limitation
	Manufacturer		European Community authorised representative
	Without, does not contain		With, contains
	Protect from light		Consult accompanying documents
	Directs the user to consult instructions for use (IFU), accompanying the product.		

For research use only. CAUTION: Not for human or animal therapeutic or diagnostic use.

www.invitrogen.com

Invitrogen Corporation • 542 Flynn Rd • Camarillo • CA 93012 • Tel: 800.955.6288 • E-mail: techsupport@invitrogen.com

This antibody is manufactured under a licensed process covered by Patent # 5, 599, 681.