

PKCiota[pT555]/ PKClambda[pT563] ABfinity™ Recombinant Rabbit Monoclonal Antibody - Purified



Catalog no. 700582

(See product label for lot information)

Clone/PAD: 31H34L29
Isotype: IgG
Gene ID: 5584
Protein Acc. no.: P41743
Qty: 100 µg
Volume: 200 µl
Concentration: 0.5 mg/mL

Formulation

PBS + 0.09% sodium azide

Validation

Validated for use in WB

Immunogen

Peptide

Immunogen sequence

TNEPVQL[pT]PDDD

Reactivity

Human

Expected Reactivity

Based on sequence identity and similarity, reactivity to human, mouse, rat, primates, canine, bovine, swine, chicken, equine, zebrafish, xenopus and numerous other species are expected.

Storage

2-8°C for up to 1 month, -20°C for long term storage. Avoid repeated freezing and thawing.

Expiration Date

Expires one year from date of receipt when stored as instructed.

Background

PKC iota/PKC lambda, is a 76 kDa member of the atypical group (cPKCs: sensitive to diacylglycerol, phosphatidylserine and phorbol esters) of the PKC family of serine/threonine kinases that are involved in a wide range of physiological processes that include cell growth and differentiation, gene expression and hormone secretion (1-2). Recently PKC iota has been described as an oncogene and has been implicated in various cancers (3). PKC iota has also been linked to heat shock response and as an indirect co-regulator of HSF1 activity (4). Protein kinase C iota/lambda phosphorylates Glyceraldehyde-3-phosphate dehydrogenase thus playing an important role in microtubule dynamics during early secretory pathway (5).

References

- (1) Mellor, H., and Parker, P.J. (1998). The extended protein kinase C superfamily. The Biochemical journal 332 (Pt 2), 281-292.
- (2) Nishizuka, Y. (1984). The role of protein kinase C in cell surface signal transduction and tumour promotion. Nature 308, 693-698.
- (3) Fields, A.P., and Regala, R.P. (2007). Protein kinase C iota: human oncogene, prognostic marker and therapeutic target. Pharmacol Res 55, 487-497.
- (4) Boellmann, F., and Thomas, R.S. The identification of protein kinase C iota as a regulator of the Mammalian heat shock response using functional genomic screens. PloS one 5, e11850.
- (5) Tisdale, E.J. (2002). Glyceraldehyde-3-phosphate dehydrogenase is phosphorylated by protein kinase Ciota /lambda and plays a role in microtubule dynamics in the early secretory pathway. The Journal of biological chemistry 277, 3334-3341.

Following applications had been tested during development. To make sure the consistency and reliability in the future lots, each lot is tested with antigen ELISA for specificity and potency. Each lot is also tested with SDS-PAGE, to ensure high purity.

Applications:

	Species	Test Material	Concentration
Western Blotting	Human	HEK 293	4-5 µg/ml

For research use only. CAUTION: Not for human or animal therapeutic or diagnostic use.

www.invitrogen.com

Invitrogen Corporation • 542 Flynn Rd • Camarillo • CA 93012 • Tel: 800.955.6288 • E-mail: techsupport@invitrogen.com

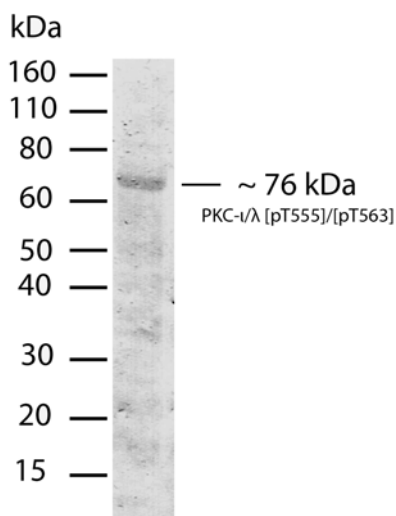
This antibody is manufactured under a licensed process covered by Patent # 5, 599, 681.

PI700582 (Rev 09/10) DCC-10-2192

Page 1 of 2

FORM-00089 (Rev 0.0)

Important Licensing Information - These products may be covered by one or more Limited Use Label Licenses (see the Invitrogen Catalog or our website, www.invitrogen.com). By use of these products you accept the terms and conditions of all applicable Limited Use Label Licenses. Unless otherwise indicated, these products are for research use only and are not intended for human or animal diagnostic, therapeutic or commercial use.



Western Blot of PKCιota[pT555]/PKCλambda[pT563] labeled with rabbit anti-PKCιota[pT555]/PKCλambda[pT563] (Cat. No. 700582).

Rabbit anti-PKCιota[pT555]/PKCλambda[pT563] (5 µg/ml) was used to label PKCιota[pT555]/PKCλambda[pT563] in HEK293 cell lysate (30 µg). The western was performed using the WesternBreeze® kit with NBT/BCIP as the substrate (Cat. No.WB7105).

Explanation of symbols

Symbol	Description	Symbol	Description
	Catalogue Number		Batch code
	Research Use Only		<i>In vitro</i> diagnostic medical device
	Use by		Temperature limitation
	Manufacturer		European Community authorised representative
	Without, does not contain		With, contains
	Protect from light		Consult accompanying documents
	Directs the user to consult instructions for use (IFU), accompanying the product.		

For research use only. CAUTION: Not for human or animal therapeutic or diagnostic use.

www.invitrogen.com

Invitrogen Corporation • 542 Flynn Rd • Camarillo • CA 93012 • Tel: 800.955.6288 • E-mail: techsupport@invitrogen.com

This antibody is manufactured under a licensed process covered by Patent # 5, 599, 681.