

Qty: 100 µL

Rabbit anti-β-Catenin [pSpS33/37]

Catalog No. 486000

Lot No. See product label

Exp. Date: See product label

Rabbit Anti-β-Catenin [pSpS 33 and 37]

FORM

This affinity-purified rabbit polyclonal antibody is supplied as a 100 µL aliquot in 10 mM HEPES (pH 7.5), 150 mM NaCl containing BSA and 50% glycerol.

PAD: ZMD.667

IMMUNOGEN

Phosphopeptide corresponding to amino acid residues surrounding the phosphoserines 33 and 37 of human β-catenin.

SPECIFICITY

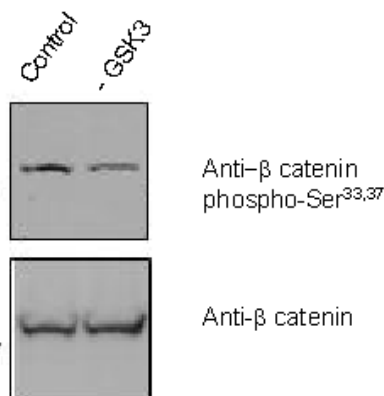
Specific for the ~83 kDa β-catenin phosphorylated at serines 33 and 37.

REACTIVITY

The antibody has been directly tested for reactivity in Western blots with human tissue. It is anticipated that the antibody will react with mouse, rat and *Xenopus* based on the fact that these species have 100% homology with the amino acid sequence used as antigen.

Sample	Western Blotting
Human	+++
Mouse	ND
Rat	ND
<i>Xenopus</i>	ND

(Excellent +++, Good ++, Poor +, No reactivity 0, Not applicable N/A, Not determined ND)



Western blot of human embryonic kidney cell (HEK) lysate showing specific immunolabeling of the ~83 kDa β-catenin phosphorylated at serine 33 and serine 37 (Upper Panel) and a pan β-catenin (Lower Panel). Control is a standard HEK cell lysate. GSK3 is a HEK cell lysate with glycogen synthase kinase 3β knocked down by SiRNA.

(cont')

www.invitrogen.com

Invitrogen Corporation • 542 Flynn Rd • Camarillo • CA 93012 • Tel: 800.955.6288 • E-mail: techsupport@invitrogen.com

PI486000

(Rev 07/10) DCC-10-1910

Important Licensing Information - These products may be covered by one or more Limited Use Label Licenses (see the Invitrogen Catalog or our website, www.invitrogen.com). By use of these products you accept the terms and conditions of all applicable Limited Use Label Licenses. Unless otherwise indicated, these products are for research use only and are not intended for human or animal diagnostic, therapeutic or commercial use.

USAGE

Working concentrations for specific applications should be determined by the investigator. Appropriate concentrations will be affected by several factors, including secondary antibody affinity, antigen concentration, sensitivity of detection method, temperature and length of incubations, etc. The suitability of this antibody for applications other than those listed below has not been determined. The following concentration ranges are recommended starting points for this product.

Western Blotting: 1:1000

STORAGE

Store at -20°C for long-term storage. Avoid repeated freezing and thawing.

BACKGROUND

β -catenin is a central component of the cadherin cell adhesion complex and plays an essential role in neural development in the Wnt/Wingless signaling pathway.^{1,2} The role of β -catenin in these processes is thought regulated by the sequential phosphorylation of serines 29, 33, 37 and threonine 41 by glycogen synthase kinase 3 β (GSK3 β).³ This hyper-phosphorylation promotes the ubiquitylation and targeted destruction of β -catenin. Mutations in components of this phosphorylation regulated process that prevent β -catenin hyperphosphorylation by GSK3 β are strongly associated with cancers.²⁻⁴

REFERENCES

1. Ding Y, Dale, T, Trends Biochem Sci 27:327-329, 2002.
2. Polakis P, Genes Dev 14:1837-1851, 2000.
3. Liu C, et al., Cell 108:837-847, 2002.
4. Wang ZH, et al., Cancer Res 63:5234-5235, 2003.

RELATED PRODUCTS

Product	Conjugate	Cat. No.
Protein A	Sepharose 4B	10-1041
rec-Protein G	Sepharose 4B	10-1241
ZyMAX™ Goat anti-rabbit IgG	Unconjugated	81-6100
ZyMAX™ Goat anti-mouse IgG	Unconjugated	81-6500

Secondary antibody conjugates.

Conjugate	Goat anti-rabbit IgG (H+L)	Goat anti-mouse IgG (H+L)	Ex/Em*	Fluorescence similar to--
Alexa Fluor® 488	A11008	A11001	495/519	FITC
Alexa Fluor® 555	A21428	A21422	555/565	Cy3
Alexa Fluor® 594	A11012	A11005	590/617	Texas Red
Alexa Fluor® 647	A21244	A21235	650/668	Cy5
HRP	81-6120	81-6520	NA**	NA
AP	81-6122	81-6522	NA	NA
Biotin	B2770	B2763	NA	NA

*Excitation/emission (nm); **Not applicable

For additional secondary antibody conjugates, visit www.invitrogen.com/antibodies

Explanation of symbols

Symbol	Description	Symbol	Description
	Catalogue Number		Batch code
	Research Use Only		In vitro diagnostic medical device
	Use by		Temperature limitation
	Manufacturer		European Community authorised representative
	Without, does not contain		With, contains
	Protect from light		Consult accompanying documents
	Directs the user to consult instructions for use (IFU), accompanying the product.		

For research use only. CAUTION: Not for human or animal therapeutic or diagnostic use.

www.invitrogen.com

Invitrogen Corporation • 542 Flynn Rd • Camarillo • CA 93012 • Tel: 800.955.6288 • E-mail: techsupport@invitrogen.com

PI486000

(Rev 07/10) DCC-10-1910

Important Licensing Information - These products may be covered by one or more Limited Use Label Licenses (see the Invitrogen Catalog or our website, www.invitrogen.com). By use of these products you accept the terms and conditions of all applicable Limited Use Label Licenses. Unless otherwise indicated, these products are for research use only and are not intended for human or animal diagnostic, therapeutic or commercial use.