



Qty: 100 μ L

Rabbit anti- α -synuclein [pS129]

Catalog No.: 482700

Lot No.: See product label

Exp. Date.: See product label

Rabbit Anti- α -Synuclein [phosphoserine 129]

FORM

This affinity-purified rabbit polyclonal antibody is supplied as a 100 μ L aliquot in 10 mM HEPES (pH 7.5), 150 mM NaCl containing BSA and 50% glycerol.

PAD: ZMD.637

IMMUNOGEN

Phosphopeptide corresponding to amino acid residues surrounding the phosphoserine 129 of α -synuclein.

SPECIFICITY

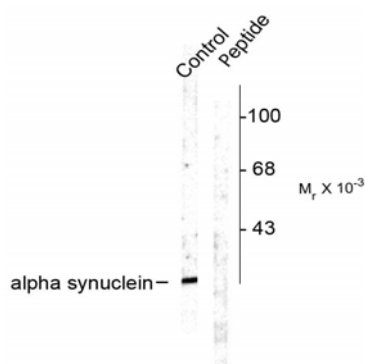
Specific for the ~15 kDa α -synuclein protein phosphorylated at serine 129. Immunolabeling is blocked by the phosphopeptide used as antigen but not by the corresponding dephosphopeptide.

REACTIVITY

The antibody has been directly tested for reactivity in Western blots with rat tissue. It is anticipated that the antibody will react with bovine, canine, human, mouse, and non-human primate based on the fact that these species have 100% homology with the amino acid sequence used as antigen.

Sample	Western Blotting
Rat	+++
Bovine	ND
Canine	ND
Human	ND
Mouse	ND
Non-human primate	ND

(Excellent +++, Good ++, Poor +, No reactivity 0, Not applicable N/A, Not determined ND)



Western blot of rat cortex lysate showing specific labeling of the ~15 kDa α -synuclein protein phosphorylated at serine 129. Immunolabeling is blocked by the phosphopeptide (peptide) used as antigen but not by the corresponding dephosphopeptide (not shown).

(cont')

www.invitrogen.com

Invitrogen Corporation • 542 Flynn Rd • Camarillo • CA 93012 • Tel: 800.955.6288 • E-mail: techsupport@invitrogen.com

PI482700

(Rev 02/10) DCC-10-0450

Important Licensing Information - These products may be covered by one or more Limited Use Label Licenses (see the Invitrogen Catalog or our website, www.invitrogen.com). By use of these products you accept the terms and conditions of all applicable Limited Use Label Licenses. Unless otherwise indicated, these products are for research use only and are not intended for human or animal diagnostic, therapeutic or commercial use.

USAGE

Working concentrations for specific applications should be determined by the investigator. Appropriate concentrations will be affected by several factors, including secondary antibody affinity, antigen concentration, sensitivity of detection method, temperature and length of incubations, etc. The suitability of this antibody for applications other than those listed below has not been determined. The following concentration ranges are recommended starting points for this product.

Western Blotting: 1:1000

STORAGE

Store at -20°C for long-term storage. Avoid repeated freezing and thawing.

BACKGROUND

Alpha-synuclein is a presynaptic neuronal protein that is thought to be involved in the formation of SNARE complexes. Most significantly, aggregated α -synuclein is one of the major components found in the Lewy bodies that occur in Parkinson's disease (PD) and other neurodegenerative disorders.¹ Mutation of the alpha-synuclein gene is associated with familial forms of PD.² Recent evidence suggests that phosphorylation of alpha-synuclein at serine 129 plays a role in the formation of inclusions in PD.^{3,4}

REFERENCES

1. Okochi M, et al., J Biol Chem Jan 7;275(1): 390-7, 2000.
2. Newmann M. et al., J Clin Invest Nov; 110(10):1403-5, 2002.
3. Smith WW, et al., J Neurosci June 8; 25(23):5544-5552, 2005.
4. Masliah E, et al., Neuron Jun 16;46(6): 857-868, 2005.

RELATED PRODUCTS

Product	Conjugate	Cat. No.
Protein A	Sepharose 4B	10-1041
rec-Protein G	Sepharose 4B	10-1241
ZyMAX™ Goat anti-rabbit IgG	Unconjugated	81-6100
ZyMAX™ Goat anti-mouse IgG	Unconjugated	81-6500

Secondary antibody conjugates.

Conjugate	Goat anti-rabbit IgG (H+L)	Goat anti-mouse IgG (H+L)	Ex/Em*	Fluorescence similar to--
Alexa Fluor® 488	A11008	A11001	495/519	FITC
Alexa Fluor® 555	A21428	A21422	555/565	Cy3
Alexa Fluor® 594	A11012	A11005	590/617	Texas Red
Alexa Fluor® 647	A21244	A21235	650/668	Cy5
HRP	81-6120	81-6520	NA**	NA
AP	81-6122	81-6522	NA	NA
Biotin	B2770	B2763	NA	NA

*Excitation/emission (nm); **Not applicable

For additional secondary antibody conjugates, visit www.invitrogen.com/antibodies

Explanation of symbols

Symbol	Description	Symbol	Description
	Catalogue Number		Batch code
	Research Use Only		In vitro diagnostic medical device
	Use by		Temperature limitation
	Manufacturer		European Community authorised representative
	Without, does not contain		With, contains
	Protect from light		Consult accompanying documents
	Directs the user to consult instructions for use (IFU), accompanying the product.		

For Research Use Only. CAUTION: Not for human or animal therapeutic or diagnostic use.

www.invitrogen.com

Invitrogen Corporation • 542 Flynn Rd • Camarillo • CA 93012 • Tel: 800.955.6288 • E-mail: techsupport@invitrogen.com

PI482700

(Rev 02/10) DCC-10-0450

Important Licensing Information - These products may be covered by one or more Limited Use Label Licenses (see the Invitrogen Catalog or our website, www.invitrogen.com). By use of these products you accept the terms and conditions of all applicable Limited Use Label Licenses. Unless otherwise indicated, these products are for research use only and are not intended for human or animal diagnostic, therapeutic or commercial use.