



CD326 (EpCAM) MicroBeads human

Order no. 130-061-101

Index

1. Description
 - 1.1 Principle of MACS® Separation
 - 1.2 Background and product applications
 - 1.3 Reagent and instrument requirements
2. Protocol
 - 2.1 Sample preparation
 - 2.2 Magnetic labeling
 - 2.3 Magnetic separation
3. Example of a separation using CD326 (EpCAM) MicroBeads
4. References
5. Appendix

1. Description

Components	2 mL CD326 (EpCAM) MicroBeads, human: MicroBeads conjugated to monoclonal antibody (isotype: mouse IgG1).
Size	For 10 ⁹ total cells, up to 20 separations.
Product format	CD326 (EpCAM) MicroBeads are supplied in buffer containing stabilizer and 0.05% sodium azide.
Storage	Store protected from light at 2–8 °C. Do not freeze. The expiration date is indicated on the vial label.

1.1 Principle of MACS® Separation

First, the CD326 (EpCAM)⁺ cells are magnetically labeled with CD326 (EpCAM) MicroBeads. Then the cell suspension is loaded onto a MACS® Column which is placed in the magnetic field of a MACS Separator. The magnetically labeled CD326 (EpCAM)⁺ cells are retained within the column. The unlabeled cells run through; this cell fraction is depleted of CD326 (EpCAM)⁺ cells. After removing the column from the magnetic field, the magnetically retained CD326 (EpCAM)⁺ cells can be eluted as the positively selected cell fraction.

1.2 Background and product applications

Epithelial cell adhesion molecule (EpCAM), which is also known as CD326 and human epithelial antigen (HEA), is broadly expressed on cells of epithelial origin and on epithelial derived tumor cells¹. CD326 (EpCAM) MicroBeads are used for the positive selection of viable epithelial tumor cells from peripheral blood, bone marrow, lymphoid tissue and serous effusions of patients with carcinomas. In order to prevent FcR-mediated non-specific labeling of non-epithelial cells it is strongly recommended to use FcR Blocking Reagent before magnetically labeling.

Example applications

- Enrichment of disseminated carcinoma cells from peripheral blood, bone marrow, and lymphoid tissue, for example, of patients with epithelial cancer for subsequent analysis, e.g., enumeration, cultivation, or RT-PCR.
- Purification of CD326 (EpCAM)⁺ cells from epithelial tissues (e.g. carcinomas).

1.3 Reagent and instrument requirements

- Buffer: Prepare a solution containing phosphate-buffered saline (PBS) pH 7.2, 0.5% bovine serum albumin (BSA), and 2 mM EDTA by diluting MACS BSA Stock Solution (# 130-091-376) 1:20 with autoMACS™ Rinsing Solution (# 130-091-222). Keep buffer cold (4–8 °C). Degas buffer before use, as air bubbles could block the column.
 - ▲ **Note:** EDTA can be replaced by other supplements such as anticoagulant citrate dextrose formula-A (ACD-A) or citrate phosphate dextrose (CPD). BSA can be replaced by other proteins such as human serum albumin, human serum, or fetal calf serum. Buffers or media containing Ca²⁺ or Mg²⁺ are not recommended for use.
- MACS Columns and MACS Separators: CD326 (EpCAM)⁺ cells can be enriched by using MS, LS or XS Columns (positive selection) or depleted with the use of LD, CS, or D Columns. Cells which strongly express the CD326 (EpCAM) antigen can also be depleted using MS, LS, or XS Columns. Positive selection or depletion can also be performed by using the autoMACS Separator.

Column	Max. number of labeled cells	Max. number of total cells	Separator
Positive selection			
MS	10 ⁷	2×10 ⁸	MiniMACS, OctoMACS, VarioMACS, SuperMACS
LS	10 ⁸	2×10 ⁹	MidiMACS, QuadroMACS, VarioMACS, SuperMACS
XS	10 ⁹	2×10 ¹⁰	SuperMACS
Depletion			
LD	10 ⁸	5×10 ⁸	MidiMACS, QuadroMACS, VarioMACS, SuperMACS
CS	2×10 ⁸		VarioMACS, SuperMACS
D	10 ⁹		SuperMACS
Positive selection or depletion			
autoMACS	2×10 ⁸	4×10 ⁹	autoMACS

- ▲ **Note:** Column adapters are required to insert certain columns into the VarioMACS™ or SuperMACS™ Separators. For details see the respective MACS Separator data sheet.
- FcR Blocking Reagent containing human IgG (# 130-059-901) to avoid Fc receptor-mediated staining.

140 000 091



- (Optional) Fluorochrome-conjugated CD326 antibody for flow cytometric analysis, for example, CD326 (EpCAM)-FITC (# 130-080-301), CD326 (EpCAM)-PE (# 130-091-253), or CD326 (EpCAM)-APC (# 130-091-254) and CD45 conjugated to a different fluorochrome, for example, CD45-FITC (# 130-080-202), CD45-PE (# 130-080-201), or CD45-APC (# 130-091-230).
- (Optional) Propidium iodide (PI) or 7-AAD for flow-cytometric exclusion of dead cells.
- (Optional) Pre-Separation Filters (# 130-041-407) to remove cell clumps.
- (Optional) for bone marrow: HEPES buffered cell culture medium (e.g. Iscove's modified Dulbecco medium [IMDM]).
- (Optional) for bone marrow: Heparin.
- (Optional) for bone marrow and cryopreserved cells: DNaseI.
- (Optional) for cryopreserved cells: Dulbecco's PBS (pH 7.0–7.2), containing 0.5 mM MgCl₂ and 1 mM CaCl₂, 0.5% BSA.

2. Protocol

2.1 Sample preparation

When working with anticoagulated peripheral blood or buffy coat, peripheral blood mononuclear cells (PBMCs) should be isolated by density gradient centrifugation, e.g. using Ficoll-Paque™. For details see section General Protocols in the user manuals or visit www.miltenyibiotec.com/protocols.

▲ **Note:** To remove platelets after density gradient separation, resuspend cell pellet in buffer and centrifuge at 200×g for 10–15 minutes at 20 °C. Carefully aspirate supernatant. Repeat washing step.

When working with tissues, prepare a single-cell suspension by a standard preparation method. For details see section General Protocols in the user manuals or visit www.miltenyibiotec.com/protocols.

▲ **Note:** Dead cells may bind non-specifically to MACS MicroBeads. To remove dead cells, we recommend using density gradient centrifugation.



2.2 Magnetic labeling

▲ Work fast, keep cells cold, and use pre-cooled solutions. This will prevent capping of antibodies on the cell surface and non-specific cell labeling.

▲ Volumes for magnetic labeling given below are for up to 5×10⁷ total cells. When working with fewer than 5×10⁷ cells, use the same volumes as indicated. When working with higher cell numbers, scale up all reagent volumes and total volumes accordingly (e.g. for 10⁸ total cells, use twice the volume of all indicated reagent volumes and total volumes).

▲ For optimal performance it is important to obtain a single-cell suspension before magnetic separation. Pass cells through 30 μm nylon mesh (Pre-Separation Filters, # 130-041-407) to remove cell clumps which may clog the column.

▲ Always include positive and negative controls when working with patient samples. For a positive control, PBMCs spiked with tumor cells should be used. For a negative control, simply use PBMCs from a healthy donor.

1. Determine cell number.
2. Centrifuge cell suspension at 300×g for 10 minutes. Aspirate supernatant completely.
3. Resuspend cell pellet in 300 μL of buffer per 5×10⁷ total cells.
4. Add 100 μL of FcR Blocking Reagent per 5×10⁷ total cells and mix well.
 - ▲ **Note:** FcR Blocking Reagent should be used to block Fc receptor-mediated labeling of non-epithelial cells.
5. Add 100 μL of CD326 (EpCAM) MicroBeads per 5×10⁷ total cells.
6. Mix well and refrigerate for 30 minutes (4–8 °C).
 - ▲ **Note:** Working on ice may require increased incubation times. Higher temperatures and/or longer incubation times may lead to non-specific cell labeling.
7. (Optional) Add staining antibodies, for example, 50 μL of CD326 (EpCAM)-FITC (# 130-080-301) and CD45 conjugated to another fluorochrome (e.g. CD45-PE, # 130-080-201), and refrigerate for 5 minutes in the dark (4–8 °C).
8. Wash cells by adding 5–10 mL of buffer per 5×10⁷ cells and centrifuge at 300×g for 10 minutes. Aspirate supernatant completely.
9. Resuspend up to 10⁸ cells in 500 μL of buffer.
 - ▲ **Note:** For higher cell numbers, scale up buffer volume accordingly.
 - ▲ **Note:** For depletion with LD Columns, resuspend for up to 1.25×10⁸ cells in 500 μL of buffer.
10. Proceed to magnetic separation (2.3).



2.3 Magnetic separation

▲ Choose an appropriate MACS Column and MACS Separator according to the number of total cells and the number of CD326 (EpCAM)⁺ cells. For details see table in section 1.3.

Magnetic separation with MS or LS Columns

1. Place column in the magnetic field of a suitable MACS Separator. For details see respective MACS Column data sheet.
2. Prepare column by rinsing with appropriate amount of buffer:
MS: 500 μL LS: 3 mL
3. Apply cell suspension onto the column.
4. Collect unlabeled cells that pass through and wash column with appropriate amount of buffer. Perform washing steps by adding buffer three times. Only add new buffer when the column reservoir is empty.
MS: 4×500 μL LS: 4×3 mL
Collect total effluent; this is the unlabeled cell fraction.
5. Remove column from the separator and place it on a suitable collection tube.
6. Pipette an appropriate amount of buffer onto the column. Immediately flush out the magnetically labeled cells by firmly pushing the plunger into the column.
MS: 1 mL LS: 5 mL
 - ▲ **Note:** To increase the purity of the magnetically labeled fraction, pass the cells over a new, freshly prepared column.

Magnetic separation with XS Columns

For instructions on the column assembly and the separation, refer to the XS Column data sheet.

Depletion with LD Columns

1. Place LD Column in the magnetic field of a suitable MACS Separator. For details see LD Column data sheet.
2. Prepare column by rinsing with 2 mL of buffer.
3. Apply cell suspension onto the column.
4. Collect unlabeled cells that pass through and wash column with 2×1 mL of buffer. Collect total effluent. This is the unlabeled cell fraction.

Depletion with CS Columns

1. Assemble CS Column and place it in the magnetic field of a suitable MACS Separator. For details see CS Column data sheet.
2. Prepare column by filling and rinsing with 60 mL of buffer. Attach a 22G flow resistor to the 3-way-stopcock of the assembled column. For details see CS Column data sheet.
3. Apply cell suspension onto the column.
4. Collect unlabeled cells that pass through and wash column with 30 mL buffer from the top. Collect total effluent. This is the unlabeled cell fraction.

Depletion with D Columns

For instructions on column assembly and separation refer to the D Column data sheet.

Magnetic separation with the autoMACS™ Separator

▲ Refer to the autoMACS™ User Manual for instructions on how to use the autoMACS Separator.

1. Prepare and prime autoMACS Separator.
2. Place tube containing the magnetically labeled cells in the autoMACS Separator. For a standard separation, choose one of the following separation programs:

Positive selection: "Posseld"

Depletion: "Depletes"

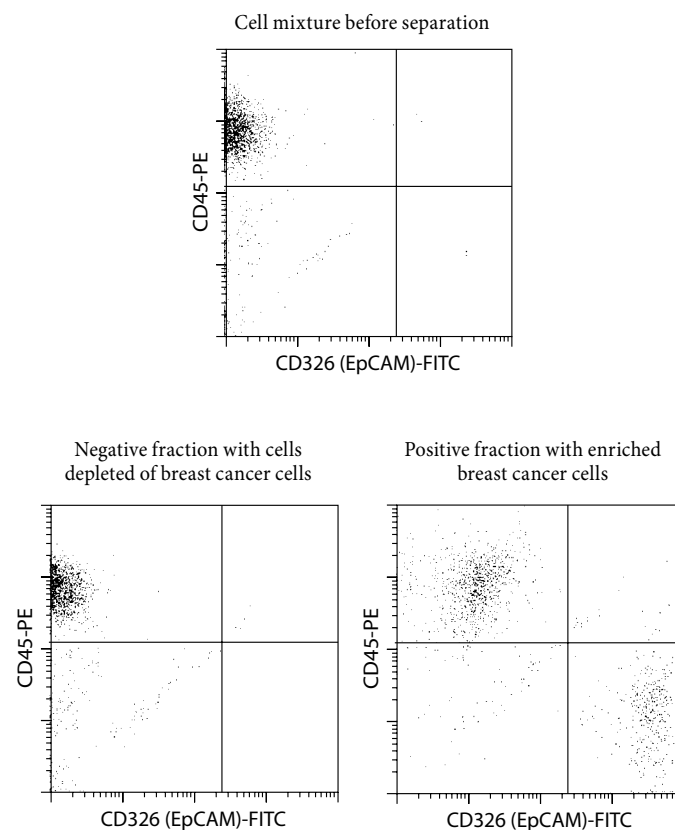
▲ **Note:** Program choice depends on the isolation strategy, the strength of magnetic labeling and the frequency of magnetically labeled cells. For details see autoMACS user manual, section autoMACS Cell Separation Programs.

3. When using the program "Posseld", collect positive fraction from outlet port pos2. This is the purified CD326 (EpCAM)⁺ cell fraction.

When using the program "Depletes", collect unlabeled fraction from outlet port neg1. This is the CD326 (EpCAM)⁻ cell fraction.

3. Example of a separation using CD326 (EpCAM) MicroBeads

Enrichment of tumor cells from PBMCs spiked with cells from a breast cancer cell line (BT474) using CD326 (EpCAM) MicroBeads, a MiniMACS™ Separator, and an MS Column. Cells are fluorescently stained with CD326 (EpCAM)-FITC (# 130-080-301) and CD45-PE (# 130-080-201). Cell debris and dead cells are excluded from the analysis based on scatter signals and PI fluorescence.



4. References

1. Moldenhauer, G. *et al.* (1987) Epithelium-specific surface glycoprotein of Mr 34,000 is a widely distributed human carcinoma marker. *Br. J. Cancer* 56: 714–721.
2. Coligan, J. E. *et al.* (eds.): *Current Protocols in Immunology*. New York, John Wiley & Sons, Inc. (1994).
3. Garau, D. *et al.* (1997) Detection of Breast Cancer Cells using the Magnetic Cell Separation (MACS) System: Implications for Stem cell Purging. *Europ. J. Histochem.* 41(S2): 18–19. [378]
4. Krüger, W. *et al.* (1999) Improvement of breast cancer cell detection by immunomagnetic enrichment. *Cytotherapy* 1: 135–139. [568]
5. Krüger, W. *et al.* (2000) Immunomagnetic tumor cell selection-implications for the detection of disseminated cancer cells. *Transfusion* 40: 1489–1493. [984]
6. Leinung, S. *et al.* (2000) Cytokeratin-positive cells in bone marrow in comparison with other prognostic factors in colon carcinoma. *Langenbeck's Arch. Surg.* 385: 337–343. [986]
7. Tögel, F. *et al.* (2001) Urokinase-like Plasminogen Activator Receptor Expression on Disseminated Breast Cancer Cells. *J. Hematother. Stem Cell Res.* 10: 141–145. [985]

5. Appendix

Preparation of peripheral blood mononuclear cells (PBMCs) using Ficoll-Paque™

▲ The peripheral blood or buffy coat should not be older than 8 hours and supplemented with anticoagulants (e.g. heparin, EDTA, citrate, ACD-A or citrate phosphate dextrose (CPD)).

▲ PBMCs may be stored in the refrigerator overnight in PBS containing 0.5% BSA supplemented with autologous serum after the last washing step.

- Dilute cells with 2–4× the volume of PBS containing 2 mM EDTA (PBS/EDTA) or 0.6% ACD-A.
▲ **Note:** The more diluted the blood sample, the better the purity of the mononuclear cells.
- Carefully layer 35 mL of diluted cell suspension over 15 mL Ficoll-Paque™ ($\rho = 1.077$) in a 50 mL conical tube.
- Centrifuge at 400×g for 30–40 minutes at 20 °C in a swinging-bucket rotor without brake.
- Aspirate the upper layer leaving the mononuclear cell layer undisturbed at the interphase.
- Carefully transfer the interphase cells (lymphocytes, monocytes, and thrombocytes) to a new 50 mL conical tube.
- Fill the conical tube with PBS containing 2 mM EDTA or 0.6% ACD-A, mix and centrifuge at 300×g for 10 minutes at 20 °C. Carefully aspirate supernatant completely.
- For removal of platelets, resuspend cell pellet in 50 mL of PBS containing 2 mM EDTA or 0.6% ACD-A and wash twice: centrifuge at 200×g for 10–15 minutes at 20 °C. Remove supernatant completely.
▲ **Note:** This step increases the purity of the CD326 (EpCAM) cell separation.
- Repeat step 7. Most of the platelets will remain in the supernatant upon centrifugation at 200×g.
- Resuspend cell pellet in a final volume of 300 µL of buffer for up to 5×10^7 total cells. Proceed to magnetic labeling (2.2).

Preparation of bone marrow cells

- Collect bone marrow in 50 mL tubes containing 5 mL PBS, pH 7.2, containing 2 mM EDTA, or 0.6% ACD-A, or 200 U/mL heparin.
▲ **Note:** Store cells at 4 °C if the cells cannot be processed immediately.
- For preparation of a single-cell suspension of bone marrow cells dilute with 10× the volume of RPMI 1640 containing 0.02% collagenase B and 100 U/mL DNase and shake gently at room temperature for 45 minutes.
- Pass cells through 30 µm nylon mesh (Pre-Separation Filters, # 130-041-407), in order to remove cells clumps. Wet filter with buffer before use.
- Carefully layer 35 mL of diluted cell suspension over 15 mL Ficoll-Paque in a 50 mL conical tube.
- Centrifuge at 400×g for 35 minutes at 20 °C in a swinging-bucket rotor without brake.
- Aspirate the upper layer leaving the mononuclear cell layer undisturbed at the interphase.
- Carefully transfer the interphase cells (lymphocytes, monocytes, and thrombocytes) to a new 50 mL conical tube.

- Fill the conical tube with PBS containing 2 mM EDTA or 0.6% ACD-A, mix, and centrifuge at 300×g for 10 minutes at 20 °C. Carefully aspirate supernatant completely.
- Repeat step 8.
▲ **Note:** This step increases the purity of the CD326 (EpCAM) cell separation.
- Resuspend cell pellet in a final volume of 300 µL of buffer for up to 10^8 total cells. Proceed to magnetic labeling (2.2).

Preparation of cryopreserved cells

- Thaw frozen cells (usually in 1–2 mL vials containing 10^7 – 10^8 cells) quickly at 40 °C in a waterbath by shaking the tube. Take the tube from the waterbath when there is still a very small piece of ice in the suspension and continue shaking for some seconds until the ice has disappeared.
- Place cells immediately on ice.
- Transfer cells to a 50 mL conical tube and dilute the cells (1–2 mL) slowly with cold (4 °C) Dulbecco's PBS (pH 7.0–7.2), containing 0.5 mM $MgCl_2$ and 1 mM $CaCl_2$, 0.5% BSA, 100 U/mL DNase to a final volume of 20 mL.
- Incubate cells for 10 minutes on ice (4 °C).
- Centrifuge cell suspension at 300×g for 10 minutes at 4 °C.
- Carefully remove supernatant.
- Resuspend cell pellet in 15 mL of Dulbecco's PBS (pH 7.0–7.2), containing 0.5 mM Mg^{2+} and 1 mM Ca^{2+} , 0.5% BSA, and 100 U/mL DNase and centrifuge at 300×g for 10 minutes at 4 °C.
- Carefully remove supernatant completely.
- Resuspend cell pellet in a final volume of 300 µL of buffer for up to 5×10^7 total cells. Proceed to magnetic labeling (2.2).

Preparation of cells from lymphoid tissue

- Isolate single-cell suspension from lymphoid tissue by a standard preparation method.
- Centrifuge cells at 300×g for 10 minutes in a 15 mL conical tube.
- Carefully aspirate supernatant completely.
- Resuspend cell pellet in a final volume of 300 µL of buffer for up to 5×10^7 total cells. Proceed to magnetic labeling (2.2).

Warnings

Reagents contain sodium azide. Under acidic conditions sodium azide yields hydrazoic acid, which is extremely toxic. Azide compounds should be diluted with running water before discarding. These precautions are recommended to avoid deposits in plumbing where explosive conditions may develop.

Warranty

The products sold hereunder are warranted only to be free from defects in workmanship and material at the time of delivery to the customer. Miltenyi Biotec GmbH makes no warranty or representation, either expressed or implied, with respect to the fitness of a product for a particular purpose. There are no warranties, expressed or implied, which extend beyond the technical specifications of the products. Miltenyi Biotec GmbH's liability is limited to either replacement of the products or refund of the purchase price. Miltenyi Biotec GmbH is not liable for any property damage, personal injury or economic loss caused by the product.

MACS is a registered trademark and autoMACS, MidiMACS, MiniMACS, OctoMACS, QuadroMACS, SuperMACS, and VarioMACS are trademarks of Miltenyi Biotec GmbH.

Ficoll-Paque is a trademark of GE Healthcare companies.

© 2007 Miltenyi Biotec GmbH.