

Technical Data Sheet

Purified Mouse Anti-Human Prostatin

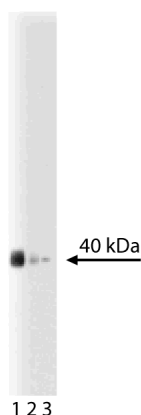
Product Information

Material Number:	612173
Size:	150 µg
Concentration:	250 µg/ml
Clone:	2/Prostatin
Immunogen:	Human Prostatin aa. 108-228
Isotype:	Mouse IgG2a
Reactivity:	QC Testing: Human
Storage Buffer:	Aqueous buffered solution containing BSA, glycerol, and ≤0.09% sodium azide.

Description

Prostatin is a serine protease expressed as both GPI-anchored and secreted forms. Prostatin displays trypsin-like enzymatic activity by hydrolyzing substrates, such as D-Pro-Phe-Arg-AMC. This activity is inhibited by aprotinin, antipain, leupeptin, and benzamidine. The highest levels of prostatin protein are found in semen and the prostate, but many other tissues express prostatin at low levels. The sequence of prostatin is similar to other proteases, such as prostase, testisin, plasma kallikrein, and acrosin. In seminal fluid, prostatin can be found in complex with prostatin-binding protein, which can inhibit prostatin enzymatic activity. Prostatin mRNA is found in normal prostate epithelial cells and non-invasive prostate cancer cells, but is not expressed in invasive prostate cancer cell lines. Expression of prostatin in the invasive prostate cancer cell lines, DU-145 and PC-3, reduces the invasiveness of the cells in vitro. Thus, prostatin is a serine protease that may have roles in normal prostate function and in suppression of tumor cell invasion.

This antibody is routinely tested by western blot analysis. Other applications were tested at BD Biosciences Pharmingen during antibody development only or reported in the literature.



Western blot analysis of prostatin on a LNCaP-FGC-10 (human prostate cancer cell line) lysate. Lane 1: 1:250, lane 2: 1:500, lane 3: 1:1000 dilution of the anti-prostatin antibody.

Preparation and Storage

The monoclonal antibody was purified from tissue culture supernatant or ascites by affinity chromatography. Store undiluted at -20° C.

Application Notes

Application

Western blot	Routinely Tested
Immunofluorescence	Not Recommended

BD Biosciences

bdbiosciences.com

United States	Canada	Europe	Japan	Asia Pacific	Latin America/Caribbean
877.232.8995	888.259.0187	32.53.720.550	0120.8555.90	65.6861.0633	55.11.5185.9995

For country-specific contact information, visit bdbiosciences.com/how_to_order/

Conditions: The information disclosed herein is not to be construed as a recommendation to use the above product in violation of any patents. BD Biosciences will not be held responsible for patent infringement or other violations that may occur with the use of our products. Purchase does not include or carry any right to resell or transfer this product either as a stand-alone product or as a component of another product. Any use of this product other than the permitted use without the express written authorization of Becton Dickinson and Company is strictly prohibited.

For Research Use Only. Not for use in diagnostic or therapeutic procedures. Not for resale.

BD, BD Logo and all other trademarks are the property of Becton, Dickinson and Company. ©2006 BD



BD

BD Biosciences

Suggested Companion Products

Catalog Number	Name	Size	Clone
554002	HRP Goat Anti-Mouse Igs	1.0 ml	(none)

Product Notices

1. Since applications vary, each investigator should titrate the reagent to obtain optimal results.
2. Please refer to www.bdbiosciences.com/pharming/en/protocols for technical protocols.
3. Caution: Sodium azide yields highly toxic hydrazoic acid under acidic conditions. Dilute azide compounds in running water before discarding to avoid accumulation of potentially explosive deposits in plumbing.
4. Source of all serum proteins is from USDA inspected abattoirs located in the United States.

References

Chen LM, Hodge GB, Guarda LA, Welch JL, Greenberg NM, Chai KX. Down-regulation of prostatic serine protease: a potential invasion suppressor in prostate cancer. *Prostate*. 2001; 48(2):93-103.(Biology)

Chen LM, Skinner ML, Kauffman SW, et al. Prostatic is a glycosylphosphatidylinositol-anchored active serine protease. *J Biol Chem*. 2001; 276(24):21434-21442. (Biology)

Yu JX, Chao L, Chao J. Prostatic is a novel human serine proteinase from seminal fluid. Purification, tissue distribution, and localization in prostate gland. *J Biol Chem*. 1994; 269(29):18843-18848.(Biology)

Yu JX, Chao L, Chao J. Molecular cloning, tissue-specific expression, and cellular localization of human prostatic mRNA. *J Biol Chem*. 1995; 270(22):13483-13489.(Biology)