

## Technical Data Sheet

## Purified Mouse Anti-Human DLC-1

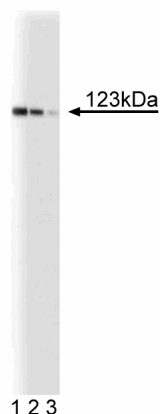
## Product Information

Material Number:	612020
Size:	50 µg
Concentration:	250 µg/ml
Clone:	3/DLC-1
Immunogen:	Human DLC-1 aa. 47-249
Isotype:	Mouse IgG1
Reactivity:	QC Testing: Human
Target MW:	123 kDa
Storage Buffer:	Aqueous buffered solution containing BSA, glycerol, and ≤0.09% sodium azide.

## Description

Members of the Ras superfamily of GTPases are distantly related to the heterotrimeric G proteins and shuttle between inactive and active GTP-bound forms. Conversion between these forms is controlled by guanine nucleotide exchange factors (GEFs) and GTPase-activating proteins (GAPs). Rho is a GTPase that regulates cell morphology and motility in response to extracellular signals. p190A, p190B, and p122 RhoGAPs all contain RhoGAP domains and regulate the GTPase activity of Rho. p122 RhoGAP exhibits GAP activity for RhoA, but not Rac1, and binds and activates PLC-δ1. Microinjection of p122 RhoGAP suppresses LPA-induced formation of stress fibers and focal adhesions. Deleted in liver cancer-1 (DLC-1) was identified by its frequent deletion in liver cancer and is a human homologue of rat p122 RhoGAP. DLC-1 is expressed in many hepatocellular carcinoma tissues and cell lines and could be an important tumor suppressor gene. In normal human tissues, DLC-1 is expressed widely with the highest expression in heart and lung. Both p122 RhoGAP and DLC-1 have RhoGAP domains toward their C-terminal regions, which is thought to be important for regulation of Rho GTPase activity in many tissues.

This antibody is routinely tested by western blot analysis. Other applications were tested at BD Biosciences Pharmingen during antibody development only or reported in the literature.



**Western blot analysis of DLC-1 on a SK-Hep-1 (human liver adenocarcinoma) lysate.** Lane 1: 1:250, lane 2: 1:500, lane 3: 1:1000 dilution of the anti-human DLC-1 antibody.

## Preparation and Storage

Store undiluted at -20° C.

The monoclonal antibody was purified from tissue culture supernatant or ascites by affinity chromatography.

## Application Notes

## Application

Western blot	Routinely Tested
Immunofluorescence	Not Recommended

## BD Biosciences

bdbiosciences.com

United States	Canada	Europe	Japan	Asia Pacific	Latin America/Caribbean
877.232.8995	888.259.0187	32.53.720.550	0120.8555.90	65.6861.0633	55.11.5185.9995

For country-specific contact information, visit [bdbiosciences.com/how\\_to\\_order/](http://bdbiosciences.com/how_to_order/)

Conditions: The information disclosed herein is not to be construed as a recommendation to use the above product in violation of any patents. BD Biosciences will not be held responsible for patent infringement or other violations that may occur with the use of our products. Purchase does not include or carry any right to resell or transfer this product either as a stand-alone product or as a component of another product. Any use of this product other than the permitted use without the express written authorization of Becton Dickinson and Company is strictly prohibited.

For Research Use Only. Not for use in diagnostic or therapeutic procedures. Not for resale.

BD, BD Logo and all other trademarks are the property of Becton, Dickinson and Company. ©2006 BD



**BD**

**BD Biosciences**

## Suggested Companion Products

Catalog Number	Name	Size	Clone
554002	HRP Goat Anti-Mouse Igs	1.0 ml	(none)

## Product Notices

1. Since applications vary, each investigator should titrate the reagent to obtain optimal results.
2. Caution: Sodium azide yields highly toxic hydrazoic acid under acidic conditions. Dilute azide compounds in running water before discarding to avoid accumulation of potentially explosive deposits in plumbing.
3. Source of all serum proteins is from USDA inspected abattoirs located in the United States.
4. Please refer to [www.bdbiosciences.com/pharmlngen/protocols](http://www.bdbiosciences.com/pharmlngen/protocols) for technical protocols.

## References

Homma Y, Emori Y. A dual functional signal mediator showing RhoGAP and phospholipase C-delta stimulating activities. *EMBO J.* 1995; 14(2):286-291.(Biology)  
Sekimata M, Kabuyama Y, Emori Y, Homma Y. Morphological changes and detachment of adherent cells induced by p122, a GTPase-activating protein for Rho. *J Biol Chem.* 1999; 274(25):17757-17762.(Biology)  
Yuan BZ, Miller MJ, Keck CL, Zimonjic DB, Thorgeirsson SS, Popescu NC. Cloning, characterization, and chromosomal localization of a gene frequently deleted in human liver cancer (DLC-1) homologous to rat RhoGAP. *Cancer Res.* 1998; 58(10):2196-2199.(Biology)