

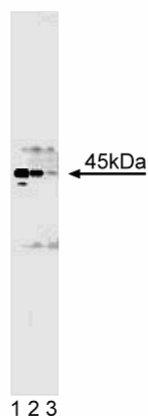
Technical Data Sheet

Purified Mouse Anti-Casein Kinase II α/α' **Product Information**

Material Number:	611611
Size:	150 μ g
Concentration:	250 μ g/ml
Clone:	31/Casein Kinase II α/α'
Immunogen:	Rat Casein Kinase II α aa. 1-123
Isotype:	Mouse IgG1
Reactivity:	QC Testing: Rat Tested in Development: Human, Mouse
Target MW:	45 kDa
Storage Buffer:	Aqueous buffered solution containing BSA, glycerol, and $\leq 0.09\%$ sodium azide.

Description

Casein kinase II (CKII, CK2) is a pleiotropic, ubiquitous, and constitutively active Ser/Thr kinase that utilizes both ATP and GTP as phosphoryl donors to catalyze the phosphorylation of numerous protein substrates. It has been implicated in DNA replication, control of metabolism, and regulation of transcription and translation. CKII is a messenger independent kinase due to the fact that its activity is not affected by factors that regulate other protein kinases (e.g. cAMP, Ca²⁺, diacylglycerol). It is composed of two catalytic (α and α') subunits and two regulatory (β) subunits. The β subunits stabilize the holoenzyme and enhance the activity of the α subunits. Although the enzyme exists as a tetramer, the free α/α' subunits are catalytically active by themselves and are present in cells under some conditions. The α and α' subunits (85% homologous) are encoded by distinct genes and have been detected in multiple species including human, bovine, and avian. CKII is found primarily in the nucleus in dividing cells, but can be detected in the cytoplasm in quiescent cells. Thus, CKII activity is required for cell cycle progression and other essential signal transduction events.



Western blot analysis of Casein Kinase α/α' on rat cerebellum lysate. Lane 1: 1:500, lane 2: 1:1000, lane 3: 1:2000 dilution of Casein Kinase α/α' .

Preparation and Storage

The monoclonal antibody was purified from tissue culture supernatant or ascites by affinity chromatography.
Store undiluted at -20°C .

Application Notes**Application**

Western blot	Routinely Tested
Immunofluorescence	Not Recommended

Recommended Assay Procedure:

Western blot: Please refer to http://www.bdbiosciences.com/pharming/protocols/Western_Blotting.shtml.

BD Biosciences

bdbiosciences.com

United States	Canada	Europe	Japan	Asia Pacific	Latin America/Caribbean
877.232.8995	888.259.0187	32.53.720.550	0120.8555.90	65.6861.0633	55.11.5185.9995

For country-specific contact information, visit bdbiosciences.com/how_to_order/

Conditions: The information disclosed herein is not to be construed as a recommendation to use the above product in violation of any patents. BD Biosciences will not be held responsible for patent infringement or other violations that may occur with the use of our products. Purchase does not include or carry any right to resell or transfer this product either as a stand-alone product or as a component of another product. Any use of this product other than the permitted use without the express written authorization of Becton Dickinson and Company is strictly prohibited.

For Research Use Only. Not for use in diagnostic or therapeutic procedures. Not for resale.

BD, BD Logo and all other trademarks are the property of Becton, Dickinson and Company. ©2008 BD



Suggested Companion Products

Catalog Number	Name	Size	Clone
611464	Rat Cerebellum Lysate	500 µg	(none)
554001	FITC Goat Anti-Mouse Ig	0.5 mg	Polyclonal

Product Notices

1. Since applications vary, each investigator should titrate the reagent to obtain optimal results.
2. Please refer to www.bdbiosciences.com/pharming/en/protocols for technical protocols.
3. Caution: Sodium azide yields highly toxic hydrazoic acid under acidic conditions. Dilute azide compounds in running water before discarding to avoid accumulation of potentially explosive deposits in plumbing.
4. Source of all serum proteins is from USDA inspected abattoirs located in the United States.

References

Freeman WM, Brebner K, Lynch WJ, et al. Changes in rat frontal cortex gene expression following chronic cocaine. *Brain Res Mol Brain Res.* 2002; 104(1):11-20. (Clone-specific: In situ hybridization, Western blot)

Greer SF, Wang Y, Raman C, Justement LB. CD45 function is regulated by an acidic 19-amino acid insert in domain II that serves as a binding and phosphoacceptor site for casein kinase 2. *J Immunol.* 2001; 166(12):7208-7218.(Clone-specific: Western blot)

Kikkawa U, Mann SK, Firtel RA, Hunter T. Molecular cloning of casein kinase II alpha subunit from Dictyostelium discoideum and its expression in the life cycle. *Mol Cell Biol.* 1992; 12(12):5711-5723.(Biology)

Lozeman FJ, Litchfield DW, Piening C, Takio K, Walsh KA, Krebs EG. Isolation and characterization of human cDNA clones encoding the alpha and the alpha' subunits of casein kinase II. *Biochemistry.* 1990; 29(36):8436-8447.(Biology)

Xu X, Toselli PA, Russell LD, Seldin DC. Globozoospermia in mice lacking the casein kinase II alpha' catalytic subunit. *Nat Genet.* 1999; 23(1):118-121.(Biology)