

## Technical Data Sheet

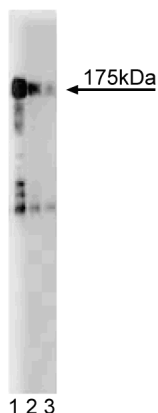
**Purified Mouse Anti-Human Attractin****Product Information**

<b>Material Number:</b>	<b>611530</b>
<b>Size:</b>	50 µg
<b>Concentration:</b>	250 µg/ml
<b>Clone:</b>	14/Attractin
<b>Immunogen:</b>	Human Attractin aa. 184-383
<b>Isotype:</b>	Mouse IgG1
<b>Reactivity:</b>	QC Testing: Human
<b>Target MW:</b>	175 kDa
<b>Storage Buffer:</b>	Aqueous buffered solution containing BSA, glycerol, and ≤0.09% sodium azide.

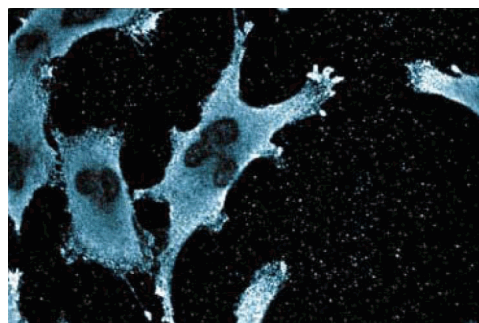
**Description**

Interactions between cell adhesion molecules and extracellular matrix (ECM) components mediate the migration of antigen specific T cells from the bloodstream to inflammatory sites. CD26, a surface marker of these T cells, is identical to dipeptidyl peptidase (DPPIV). Attractin was identified in serum as a soluble 175 kDa form of DPPIV, termed DPPT-L. It is a member of the CUB domain family, which includes the complement proteins C1r/C1s, Uegf, and BMP-1 (procollagen C proteinase), a protein that regulates cell interactions during development. Although unable to induce cell proliferation on its own, attractin enhances the proliferative response of PBMC in the presence of antigen. Attractin mediates the spreading of monocytes (antigen presenting cells; APCs) which become the focus for T cell clustering and formation of the immunoregulatory unit. Thus, attractin is thought to modulate the interaction between T cells and APCs, thereby enhancing the effectiveness of antigen presentation. In addition, attractin is the human homolog of the mahogany protein, a transmembrane signaling receptor involved in suppression of the obesity observed in mice with the agouti-lethal-yellow mutation.

This antibody is routinely tested by western blot analysis. Other applications were tested at BD Biosciences Pharmingen during antibody development only or reported in the literature.



**Western blot analysis of Attractin on human plasma.**  
Lane 1; 1:250, lane 2: 1:500, lane 3:1:1000 dilution of the mouse anti- human Attractin antibody.



**Immunofluorescence staining of human endothelial cells.**

**Preparation and Storage**

The monoclonal antibody was purified from tissue culture supernatant or ascites by affinity chromatography. Store undiluted at -20° C.

**BD Biosciences**

bdbiosciences.com

United States	Canada	Europe	Japan	Asia Pacific	Latin America/Caribbean
877.232.8995	888.259.0187	32.53.720.550	0120.8555.90	65.6861.0633	55.11.5185.9995

For country-specific contact information, visit [bdbiosciences.com/how\\_to\\_order/](http://bdbiosciences.com/how_to_order/)

Conditions: The information disclosed herein is not to be construed as a recommendation to use the above product in violation of any patents. BD Biosciences will not be held responsible for patent infringement or other violations that may occur with the use of our products. Purchase does not include or carry any right to resell or transfer this product either as a stand-alone product or as a component of another product. Any use of this product other than the permitted use without the express written authorization of Becton Dickinson and Company is strictly prohibited.

For Research Use Only. Not for use in diagnostic or therapeutic procedures. Not for resale.

BD, BD Logo and all other trademarks are the property of Becton, Dickinson and Company. ©2006 BD



**BD**

**BD Biosciences**

## Application Notes

### Application

Western blot	Routinely Tested
Immunofluorescence	Tested During Development

### Recommended Assay Procedure:

**Western blot:** Please refer to [http://www.bdbiosciences.com/pharmingen/protocols/Western\\_Blotting.shtml](http://www.bdbiosciences.com/pharmingen/protocols/Western_Blotting.shtml)

### Suggested Companion Products

Catalog Number	Name	Size	Clone
554002	HRP Goat Anti-Mouse Igs	1.0 ml	(none)
554001	FITC Goat Anti-Mouse Igs	0.5 mg	Polyclonal

### Product Notices

1. Since applications vary, each investigator should titrate the reagent to obtain optimal results.
2. Please refer to [www.bdbiosciences.com/pharmingen/protocols](http://www.bdbiosciences.com/pharmingen/protocols) for technical protocols.
3. Source of all serum proteins is from USDA inspected abattoirs located in the United States.
4. Caution: Sodium azide yields highly toxic hydrazoic acid under acidic conditions. Dilute azide compounds in running water before discarding to avoid accumulation of potentially explosive deposits in plumbing.

### References

Duke-Cohan JS, Gu J, McLaughlin DF, Xu Y, Freeman GJ, Schlossman SF. Attractin (DPPT-L), a member of the CUB family of cell adhesion and guidance proteins, is secreted by activated human T lymphocytes and modulates immune cell interactions. *Proc Natl Acad Sci U S A*. 1998; 95(19):1136-11341.(Biology)  
Gunn TM, Miller KA, He L. The mouse mahogany locus encodes a transmembrane form of human attractin. *Nature*. 1999; 398(6723):152-156.(Biology)  
Nagle DL, McGrail SH, Vitale J. The mahogany protein is a receptor involved in suppression of obesity. *Nature*. 1999; 398(6723):152-156.(Biology)