

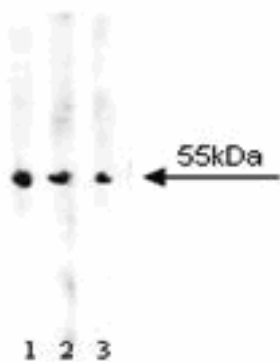
Technical Data Sheet

Purified Mouse Anti-ALDH**Product Information**

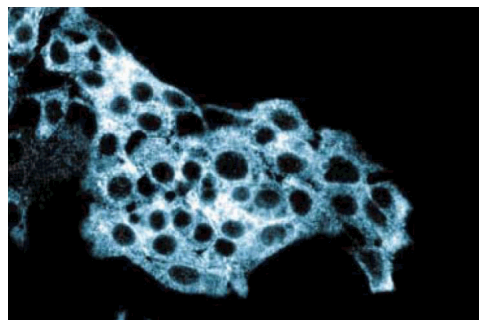
Material Number:	611194
Size:	50 µg
Concentration:	250 µg/ml
Clone:	44/ALDH
Immunogen:	Human ALDH1 aa. 7-128
Isotype:	Mouse IgG1
Reactivity:	QC Testing: Human
Target MW:	55 kDa
Storage Buffer:	Aqueous buffered solution containing BSA, glycerol, and ≤0.09% sodium azide.

Description

Aldehyde dehydrogenase (ALDH) is a ubiquitous enzyme located in nearly all mammalian tissues. It catalyzes the irreversible oxidation of a range of aliphatic and aromatic aldehydes to their corresponding carboxylic acids. There are multiple isoforms of ALDH which are subdivided into three classes. Class I includes the cytosolic isoforms. Class II includes the mitochondrial isoforms. Class III includes the microsomal, cytosolic tumor specific, and cytosolic dioxin-inducible forms. At least twelve human ALDH isoforms have been identified. Mutations of many of these proteins such as ALDH1, ALDH2, ALDH4, and ALDH10 have been implicated in multiple human metabolic disorders and clinical abnormalities. At the amino acid level, human ALDH isoforms exhibit a wide range of diversity (15% to about 80%). However, multiple protein regions have been highly conserved and are important for functional activities. A well-characterized member of the human ALDH family is ALDH1. It plays a major role in the biosynthesis of retinoic acid from retinol (vitamin A). Retinoic acid, the biologically active form of retinol, is a regulator of cellular proliferation, differentiation, and survival.



*Western blot analysis of ALDH on A431 cell lysate.
Lane 1: 1:500, lane 2: 1:1000, lane 3: 1:2000 dilution of
anti-ALDH.*



*Immunofluorescent staining on HepG2 cells with
anti-ALDH.*

Preparation and Storage

Store undiluted at -20°C.

The monoclonal antibody was purified from tissue culture supernatant or ascites by affinity chromatography.

BD Biosciences

bdbiosciences.com

United States	Canada	Europe	Japan	Asia Pacific	Latin America/Caribbean
877.232.8995	800.979.9408	32.53.720.550	0120.8555.90	65.6861.0633	55.11.5185.9995

For country contact information, visit bdbiosciences.com/contact

Conditions: The information disclosed herein is not to be construed as a recommendation to use the above product in violation of any patents. BD Biosciences will not be held responsible for patent infringement or other violations that may occur with the use of our products. Purchase does not include or carry any right to resell or transfer this product either as a stand-alone product or as a component of another product. Any use of this product other than the permitted use without the express written authorization of Becton, Dickinson and Company is strictly prohibited.

For Research Use Only. Not for use in diagnostic or therapeutic procedures. Not for resale.

Unless otherwise noted, BD, BD Logo and all other trademarks are property of Becton, Dickinson and Company. © 2011 BD



Application Notes

Application

Western blot	Routinely Tested
Immunofluorescence	Tested During Development
Immunohistochemistry	Reported

Recommended Assay Procedure:

For Western blot: Please refer to http://www.bdbiosciences.com/support/resources/cell_biology/index.jsp

Suggested Companion Products

Catalog Number	Name	Size	Clone
554002	HRP Goat Anti-Mouse Ig	1.0 ml	(none)
554001	FITC Goat Anti-Mouse Ig	0.5 mg	Polyclonal
611447	A431 Cell Lysate	500 µg	(none)

Product Notices

1. Since applications vary, each investigator should titrate the reagent to obtain optimal results.
2. Caution: Sodium azide yields highly toxic hydrazoic acid under acidic conditions. Dilute azide compounds in running water before discarding to avoid accumulation of potentially explosive deposits in plumbing.
3. Source of all serum proteins is from USDA inspected abattoirs located in the United States.
4. Please refer to www.bdbiosciences.com/pharmingen/protocols for technical protocols.

References

Greene WK, Bahn S, Masson N, Rabbitts TH. The T-cell oncogenic protein HOX11 activates Aldh1 expression in NIH 3T3 cells but represses its expression in mouse spleen development. *Mol Cell Biol.* 1998; 18(12):7030-7037. (Biology)

Kathmann EC, Lipsky JJ. Cloning of a cDNA encoding a constitutively expressed rat liver cytosolic aldehyde dehydrogenase. *Biochim Biophys Acta.* 1997; 236(2):527-531. (Biology)

Yoshida A, Rzhetsky A, Hsu LC, Chang C. Human aldehyde dehydrogenase gene family. *J Biol Chem.* 1998; 273(3):549-557. (Biology)

Zhou JH, Hanna EY, Roberts D, Weber RS, Bell D. ALDH1 immunohistochemical expression and its significance in salivary adenoid cystic carcinoma. *Head & Neck.* 2012; 35(4):575-578. (Clone-specific: Immunohistochemistry)

BD Biosciences

bdbiosciences.com

United States 877.232.8995 Canada 800.979.9408 Europe 32.53.720.550 Japan 0120.8555.90 Asia Pacific 65.6861.0633 Latin America/Caribbean 55.11.5185.9995

For country contact information, visit bdbiosciences.com/contact

Conditions: The information disclosed herein is not to be construed as a recommendation to use the above product in violation of any patents. BD Biosciences will not be held responsible for patent infringement or other violations that may occur with the use of our products. Purchase does not include or carry any right to resell or transfer this product either as a stand-alone product or as a component of another product. Any use of this product other than the permitted use without the express written authorization of Becton, Dickinson and Company is strictly prohibited.

For Research Use Only. Not for use in diagnostic or therapeutic procedures. Not for resale.

Unless otherwise noted, BD, BD Logo and all other trademarks are property of Becton, Dickinson and Company. © 2011 BD

