

Technical Data Sheet

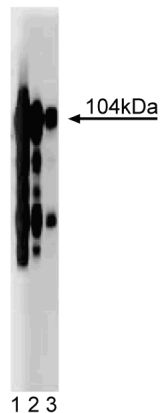
Purified Mouse Anti-Human CD61**Product Information**

Material Number:	611140
Alternate Name:	Integrin $\beta 3$ chain
Size:	50 μg
Concentration:	250 $\mu\text{g/ml}$
Clone:	1/Integrin Beta 3 Chain
Immunogen:	Human Integrin $\beta 3$ aa. 592-712
Isotype:	Mouse IgG1
Reactivity:	QC Testing: Human
Target MW:	104 kDa
Storage Buffer:	Aqueous buffered solution containing BSA, glycerol, and $\leq 0.09\%$ sodium azide.

Description

Integrins are heterodimeric transmembrane receptors that mediate cell-cell or cell-matrix adhesion. They contain noncovalently associated α and β subunits that consist of a large extracellular region (the ligand-binding domain), a short transmembrane region, and a cytoplasmic domain of varying length. In mammals, at least 17 α subunits and 8 β subunits have been identified and these proteins can heterodimerize to form at least 22 different receptors. Although there is a high degree of redundancy, each integrin has a specific biological function. For example, the $\beta 3$ subunit associates with αIIb in platelets where this glycoprotein complex acts as a fibrinogen receptor and mediates platelet aggregation. In endothelial cells (EC), $\beta 3$ complexes with the αv subunit to form the vitronectin receptor. This receptor mediates endothelial cell adhesion to vitronectin, fibrinogen, von Willebrand factor, thrombospondin, laminin, and fibronectin. In confluent EC cultures, the $\alpha \text{v}\beta 3$ integrin localizes to focal adhesions at the cell body and cell-cell borders. Thus, continued study of individual integrin subunits will provide insights to mechanisms of cell adhesion and signaling.

This antibody is routinely tested by western blot analysis. Other applications were tested at BD Biosciences Pharmingen during antibody development only or reported in the literature.



Western blot analysis of Integrin $\beta 3$ on a human platelet lysate. Lane 1: 1:2500, lane 2: 1:5000, lane 3: 1:10000 dilution of the anti-human CD61 antibody.

Preparation and Storage

The monoclonal antibody was purified from tissue culture supernatant or ascites by affinity chromatography. Store undiluted at -20°C .

BD Biosciences

bdbiosciences.com

United States	Canada	Europe	Japan	Asia Pacific	Latin America/Caribbean
877.232.8995	888.259.0187	32.53.720.550	0120.8555.90	65.6861.0633	55.11.5185.9995

For country-specific contact information, visit bdbiosciences.com/how_to_order/

Conditions: The information disclosed herein is not to be construed as a recommendation to use the above product in violation of any patents. BD Biosciences will not be held responsible for patent infringement or other violations that may occur with the use of our products. Purchase does not include or carry any right to resell or transfer this product either as a stand-alone product or as a component of another product. Any use of this product other than the permitted use without the express written authorization of Becton Dickinson and Company is strictly prohibited.

For Research Use Only. Not for use in diagnostic or therapeutic procedures. Not for resale.

BD, BD Logo and all other trademarks are the property of Becton, Dickinson and Company. ©2006 BD



Application Notes

Application

Western blot	Routinely Tested
Immunofluorescence	Tested During Development

Suggested Companion Products

<u>Catalog Number</u>	<u>Name</u>	<u>Size</u>	<u>Clone</u>
554002	HRP Goat Anti-Mouse Igs	1.0 ml	(none)
554001	FITC Goat Anti-Mouse Igs	0.5 mg	Polyclonal

Product Notices

1. Since applications vary, each investigator should titrate the reagent to obtain optimal results.
2. Please refer to www.bdbiosciences.com/pharming/en/protocols for technical protocols.
3. Caution: Sodium azide yields highly toxic hydrazoic acid under acidic conditions. Dilute azide compounds in running water before discarding to avoid accumulation of potentially explosive deposits in plumbing.
4. Source of all serum proteins is from USDA inspected abattoirs located in the United States.

References

- Albelda SM, Daise M, Levine EM, Buck CA. Identification and characterization of cell-substratum adhesion receptors on cultured human endothelial cells. *J Clin Invest.* 1989; 83(6):1192-2002.(Biology)
- Chen YP, Djaffar I, Pidard D, et al. Ser-752-->Pro mutation in the cytoplasmic domain of integrin beta 3 subunit and defective activation of platelet integrin alpha IIb beta 3 (glycoprotein IIb-IIIa) in a variant of Glanzmann thrombasthenia. *Proc Natl Acad Sci U S A.* 1992; 89(21):10169-10173.(Biology)
- Greenwood JA, Theibert AB, Prestwich GD, Murphy-Ullrich JE. Restructuring of focal adhesion plaques by PI 3-kinase. Regulation by PtdIns (3,4,5)-p(3) binding to alpha-actinin. *J Cell Biol.* 2000; 150(3):627-642.(Biology: Immunoprecipitation)
- Tang S, Gao Y, Ware JA. Enhancement of endothelial cell migration and in vitro tube formation by TAP20, a novel beta 5 integrin-modulating, PKC theta-dependent protein. *J Cell Biol.* 1999; 147(5):1073-1084.(Biology: Western blot)
- Yip KP, Marsh DJ. An Arg-Gly-Asp peptide stimulates constriction in rat afferent arteriole. *Am J Physiol.* 1997; 273(5):F768-F776.(Biology: Immunohistochemistry)