

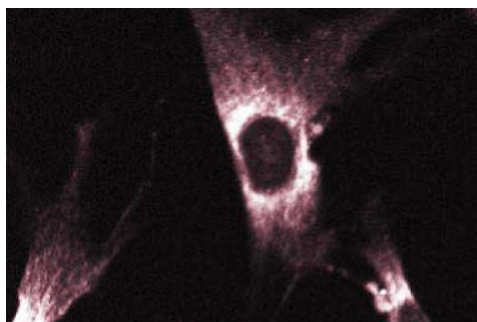
Technical Data Sheet

Purified Mouse Anti-GPI-Phospholipase D**Product Information**

Material Number:	610810
Size:	50 µg
Concentration:	250 µg/ml
Clone:	15/GPI-Phospholipase D
Immunogen:	Human GPI-Phospholipase D aa.706-841
Isotype:	Mouse IgG1
Reactivity:	QC Testing: Human
Target MW:	110 kDa
Storage Buffer:	Aqueous buffered solution containing BSA, glycerol, and ≤0.09% sodium azide.

Description

Glycosylphosphatidylinositol (GPI)-anchored proteins are involved in the regulation of numerous cell-surface activities including the complement cascade, activation of plasminogen, T-cell activation, cell-to-cell adhesion, and macromolecule transport through the membrane. GPI-containing proteins are very abundant at the caveolae. GPI-specific phospholipase D (GPI-PLD) hydrolyzes the covalently bound GPI moiety which functions as an anchor for many cell-surface proteins. Present at high levels in the plasma, GPI-PLD is also secreted by some cell types in culture. This protein releases the GPI-anchored, complement regulatory protein decay accelerating factor (DAF) from HeLa cells, as well as the basic fibroblast growth factor (bFGF)-bound heparin sulfate proteoglycan from bone marrow stromal cells. GPI-PLD contains Ca²⁺ and Zn²⁺ binding sites and bears some further structural and perhaps functional similarities to the integrins.



Immunofluorescent staining of WI-38 cells.

Western blot analysis of GPI-Phospholipase D on human plasma lysate. Lane 1: 1:250, lane 2: 1:500, lane 3: 1:1000 dilution of anti-GPI-Phospholipase D.

Preparation and Storage

The monoclonal antibody was purified from tissue culture supernatant or ascites by affinity chromatography.

Store undiluted at -20°C.

Application Notes**Application**

Western blot	Routinely Tested
Immunofluorescence	Tested During Development
Immunoprecipitation	Not Recommended
Immunohistochemistry	Not Recommended

BD Biosciences

bdbiosciences.com

United States	Canada	Europe	Japan	Asia Pacific	Latin America/Caribbean
877.232.8995	888.259.0187	32.53.720.550	0120.8555.90	65.6861.0633	55.11.5185.9995

For country-specific contact information, visit bdbiosciences.com/how_to_order/

Conditions: The information disclosed herein is not to be construed as a recommendation to use the above product in violation of any patents. BD Biosciences will not be held responsible for patent infringement or other violations that may occur with the use of our products. Purchase does not include or carry any right to resell or transfer this product either as a stand-alone product or as a component of another product. Any use of this product other than the permitted use without the express written authorization of Becton Dickinson and Company is strictly prohibited.

For Research Use Only. Not for use in diagnostic or therapeutic procedures. Not for resale.

BD, BD Logo and all other trademarks are the property of Becton, Dickinson and Company. ©2008 BD



Recommended Assay Procedure:

Western blot: Please refer to http://www.bdbiosciences.com/pharming/en/protocols/Western_Blotting.shtml.

Suggested Companion Products

Catalog Number	Name	Size	Clone
554002	HRP Goat Anti-Mouse Ig	1.0 ml	(none)
554001	FITC Goat Anti-Mouse Ig	0.5 mg	Polyclonal

Product Notices

1. Since applications vary, each investigator should titrate the reagent to obtain optimal results.
2. Please refer to www.bdbiosciences.com/pharming/en/protocols for technical protocols.
3. Caution: Sodium azide yields highly toxic hydrazoic acid under acidic conditions. Dilute azide compounds in running water before discarding to avoid accumulation of potentially explosive deposits in plumbing.
4. Source of all serum proteins is from USDA inspected abattoirs located in the United States.

References

Huang KS, Li S, Fung WJ. Purification and characterization of glycosyl-phosphatidylinositol-specific phospholipase D. *J Biol Chem.* 1990; 15(29):17738-17745. (Biology)

Li JY, Hollfelder K, Huang KS, Low MG. Structural features of GPI-specific phospholipase D revealed by proteolytic fragmentation and Ca²⁺ binding studies. *J Biol Chem.* 1994; 269(46):28963-28971. (Biology)

Metz CN, Brunner G, Choi-Muir NH. Release of GPI-anchored membrane proteins by a cell-associated GPI-specific phospholipase D. *EMBO J.* 1994; 13(7):1741-1751. (Biology)

Metz CN, Zhang YY, Guo Y. Production of the glycosylphosphatidylinositol-specific phospholipase D by the islets of Langerhans. *J Biol Chem.* 1991; 266(27):17733-17736. (Biology)